

# B34a

## FEMALE HEADER (1.0mm \* 1.0mm) PROFILE : 3.12mm SMT TYPE

PITCH: 1.0mm

### SPECIFICATIONS

#### Material

Insulator : LCP, glass reinforced, rated UL 94V-0

Contact : Phosphor Bronze

#### Electrical

Current Rating : 0.5 Amp

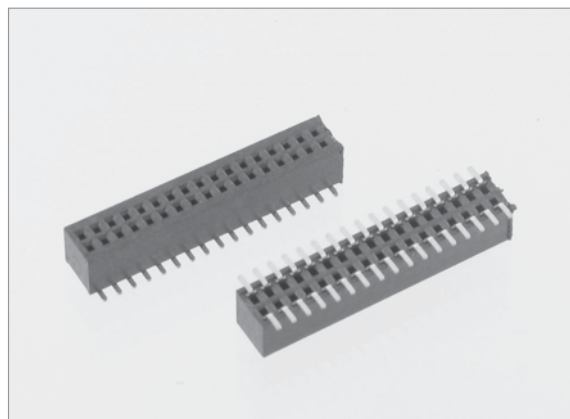
Contact Resistance : 40 mΩ max.

Insulation Resistance : 1000 MΩ min.

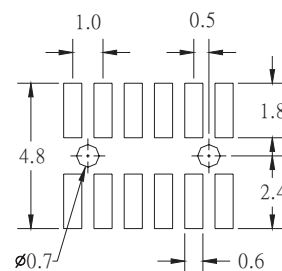
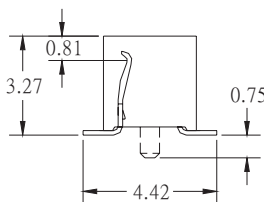
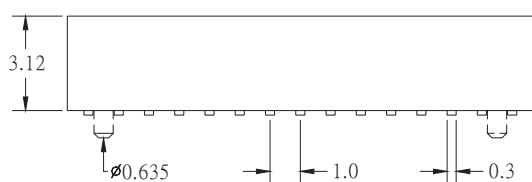
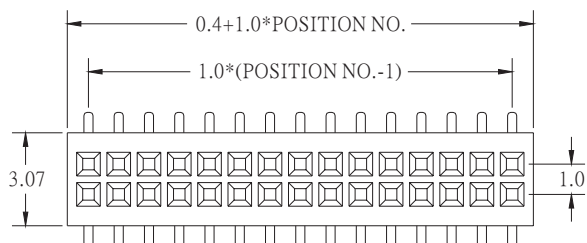
Dielectric Withstanding Voltage : 250V AC for 1minute

Operating Temperature : -40°C to +105°C

♦ Mating Suggestion : C51, C52 series.



B



RECOMMENDED P.C.B LAYOUT

### HOW TO ORDER:

B34a -  -  -  -  -  -  - G (RoHS)

1.NO. OF CONTACT		2.CONTACT MATERIAL		3.CONTACT PLATING	
DUAL ROW 2*3 - 2*50		B: PHOSPHOR BRONZE		T: TIN PLATED S: SELECTIVE G: GOLD FLASH A: 5u" INCH GOLD B: 10u" INCH GOLD C: 15u" INCH GOLD D: 30u" INCH GOLD	
4.SPECIAL FUNCTION	5.PACKAGING	6. INSULATOR COLOR			
A: WITH LOCATING PEG B: W/O LOCATING PEG	A:TUBE WITH PAD B: TUBE W/O PAD C: TAPE & REEL WITH PAD	1. BLACK			