

B15c FEMALE HEADER WITH POLARIZATION BUMP PROFILE : 9.4mm SMT TYPE

PITCH: 1.27mm

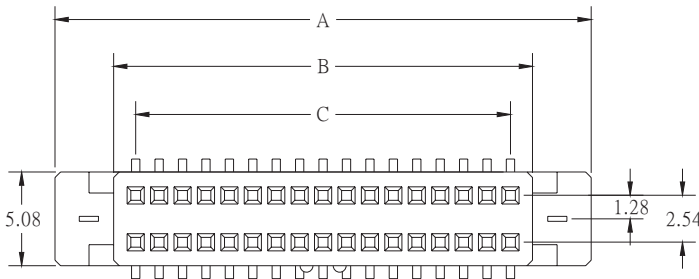
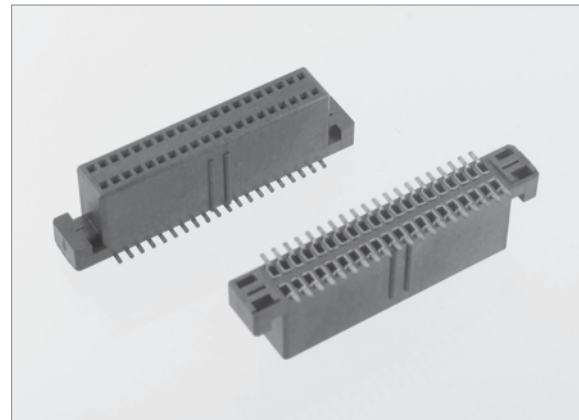
SPECIFICATIONS

Material

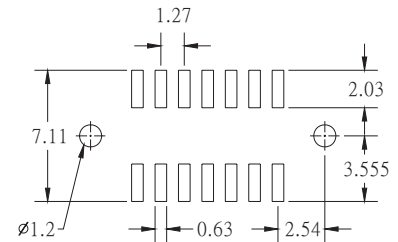
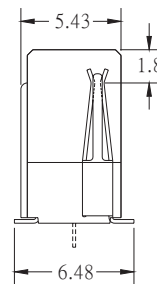
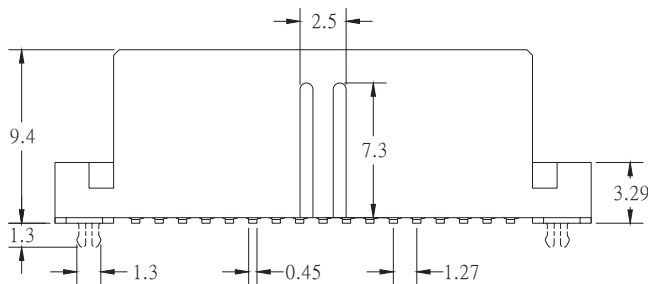
Insulator : LCP, glass reinforced, rated UL 94V-0
Contact : Phosphor Bronze

Electrical

Current Rating : 1 Amp
Contact Resistance : 30 mΩ max.
Insulation Resistance : 1000 MΩ min.
Dielectric Withstanding Voltage : 250V AC for 1minute
Operating Temperature : -40°C to +105°C
♦ Mating Suggestion : C55, C55a & C55b series.



POSITION	A	B	C
10	13.83	7.47	5.08
14	16.37	10.01	7.62
16	17.64	11.28	8.89
20	20.18	13.82	11.43
24	22.72	16.36	13.97
26	23.99	17.63	15.24
30	26.53	20.17	17.78
34	29.07	22.71	20.32
40	32.88	26.52	24.13
44	35.42	29.06	26.67
50	39.23	32.87	30.48
60	45.58	39.22	36.83
64	48.12	41.76	39.37
68	50.66	44.30	41.91
72	53.20	46.84	44.45
80	58.28	51.92	49.53
100	70.98	64.62	62.23



RECOMMENDED P.C.B. LAYOUT

HOW TO ORDER:

B15c - - - - - - - G (RoHS)

1.NO. OF CONTACT		2.CONTACT MATERIAL		3.CONTACT PLATING	
10 14 16 20 24 26 30 34 40 44 50 60 64 68 72 80 100		B: PHOSPHOR BRONZE		T: TIN PLATED S: SELECTIVE G: GOLD FLASH A: 5u" INCH GOLD B: 10u" INCH GOLD C: 15u" INCH GOLD D: 30u" INCH GOLD	
4.SPECIAL FUNCTION		5.PACKAGING		6. INSULATOR COLOR	
A: WITH LOCATING PEG B:W/O LOCATING PEG		A:TUBE WITH PAD B: TUBE W/O PAD C: TAPE & REEL WITH PAD		1. BLACK	