

B15b FEMALE HEADER WITH POLARIZATION BUMP

PROFILE : 5.8mm SMT TYPE

PITCH: 1.27mm

SPECIFICATIONS

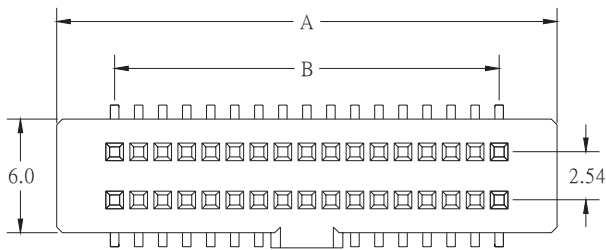
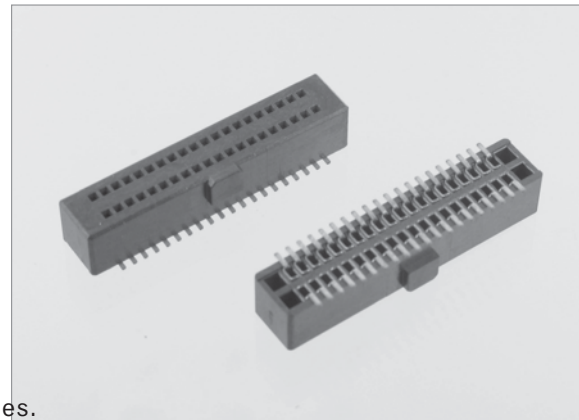
Material

Insulator : LCP, glass reinforced, rated UL 94V-0
 Contact : Phosphor Bronze

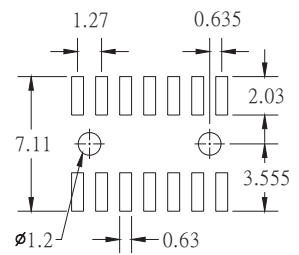
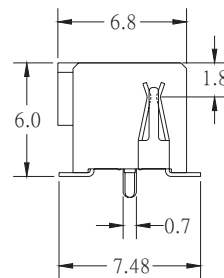
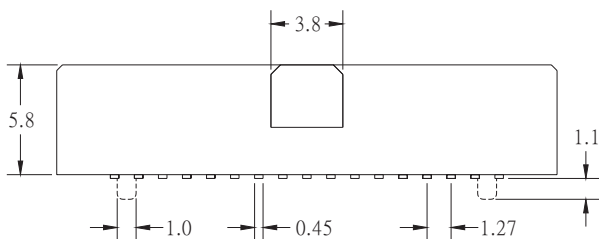
Electrical

Current Rating : 1 Amp
 Contact Resistance : 30 mΩ max.
 Insulation Resistance : 1000 MΩ min.
 Dielectric Withstanding Voltage : 250V AC for 1minute
 Operating Temperature : -40°C to +105°C

♦ Mating Suggestion : C07a, C07c, C08a, C08c & C08s series.



| POSITION | A | B |
|----------|-------|-------|
| 10 | 11.20 | 5.08 |
| 14 | 13.74 | 7.62 |
| 16 | 15.01 | 8.89 |
| 20 | 17.55 | 11.43 |
| 26 | 21.36 | 15.24 |
| 30 | 23.90 | 17.78 |
| 34 | 26.44 | 20.32 |
| 40 | 30.25 | 24.13 |
| 50 | 36.60 | 30.48 |
| 60 | 42.95 | 36.83 |
| 68 | 48.03 | 41.91 |
| 70 | 49.30 | 43.18 |
| 80 | 55.65 | 49.53 |
| 90 | 62.00 | 55.88 |
| 100 | 68.35 | 62.23 |



RECOMMENDED P.C.B. LAYOUT

HOW TO ORDER:

B15b - - - - - - - G (RoHS)

| | | | | | |
|--|--|--|--|---|--|
| 1.NO. OF CONTACT | | 2.CONTACT MATERIAL | | 3.CONTACT PLATING | |
| 10 14 16 20 26 30 34 40 50 60 68 70 80 90 100 | | B: PHOSPHOR BRONZE | | T: TIN PLATED S: SELECTIVE G: GOLD FLASH A: 5u" INCH GOLD B: 10u" INCH GOLD C: 15u" INCH GOLD D: 30u" INCH GOLD | |
| 4.SPECIAL FUNCTION | | 5.PACKAGING | | 6. INSULATOR COLOR | |
| A: WITH LOCATING PEG B: W/O LOCATING PEG | | A: TUBE WITH PAD B: TUBE W/O PAD C: TAPE & REEL WITH PAD | | 1. BLACK | |