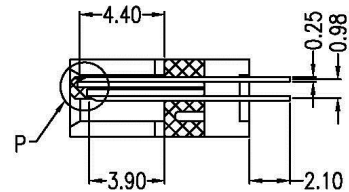
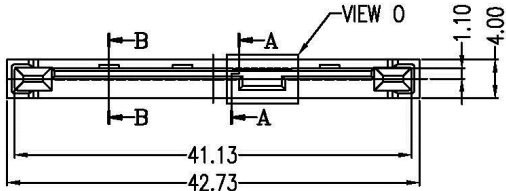
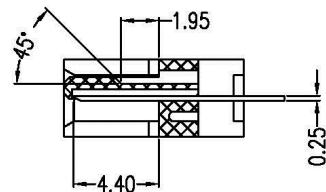


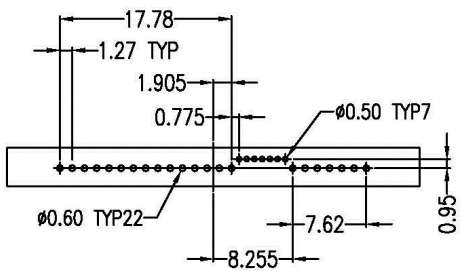
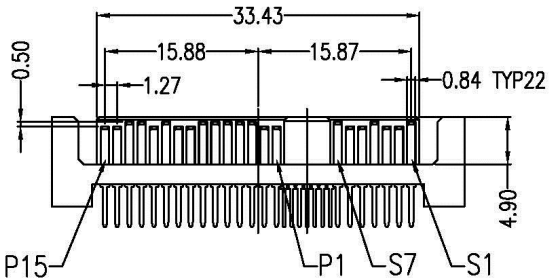
VIEW O  
SCALE 3:1



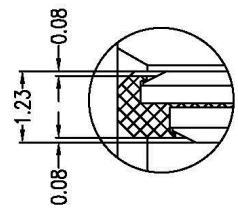
SECT A-A  
SCALE 2:1



SECT B-B  
SCALE 2:1



PCB LAYOUT  
TOP VIEW



VIEW P  
SCALE 6:1

**NOTES:**

**\*Material**

Housing: LCP, UL 94V-0 rated, Color: Black;  
Contact: Brass;  
Plating: Gold plating over Nickel on contact area; Tin plating on solder tail.

**\*Mechanical**

Insertion Force: 25N max.  
Withdrawal Force: 5N min.  
Durability: 500 cycles

**\*Electrical Specification**

Current Rating: 1 Ampere per contact;  
Contact Resistance: 30 Milliohms max.  
Insulation Resistance: 1000 megohms min.  
Dielectric Withstanding Voltage: 500 V AC.

**\*Environmental**

Operating Temperature: 0°C to +55°C

SAS-PD-29-LF  
LEADFREE  
RoHS Compliant

**All Connectors**

www.allconnectors.de  
Tel.: 0049 711 7009503  
70794 Filderstadt - Germany

info@allconnectors.de  
Fax: 0049 711 7009504  
Kettnerstr. 25

PART NO. SAS-PD-29		CHECKED BY CY		TOLERANCES ARE .X ± 0.2 .XX ± .XXX ± AWG	DESCRIPTION: SAS 29P Standard Type(180°) Male			
DWG NO. SAS-PD-29		DRAWING BY			AREA	REVISIONS	HK	DATE
FILE NO.		PROJECTION						
UNIT / mm	SCALE 1:1							