

VIEW P  
SCALE 6:1

Signal Segment		Power Segment	
Pin NO.	Type	Pin NO.	Type
S1	GND	P1	V33
S2	A+	P2	V33
S3	A-	P3	V33
S4	GND	P4	GND
S5	B-	P5	GND
S6	B+	P6	GND
S7	GND	P7	V5
S8	GND	P8	V5
S9	A+	P9	V5
S10	A-	P10	GND
S11	GND	P11	DAS/DSS
S12	B-	P12	GND
S13	B+	P13	V12
S14	GND	P14	V12
		P15	V12

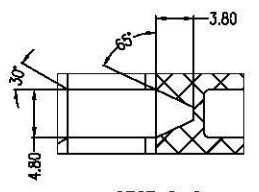
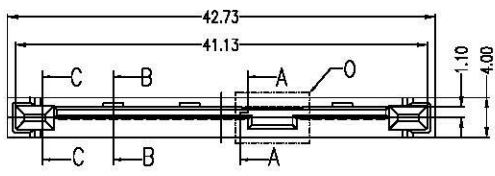
**NOTES:**

- Material:**  
Housing: LCP+50%G.F, UL 94V-0 Rated.  
Color: Black.  
Contact: Phosphor Bronze.  
Plating: Gold Plating over Nickel on Contact Area.  
Tin Plating on Solder Tail.

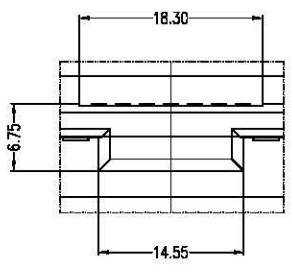
- Mechanical:**  
Insertion Force: 25N Max.  
Withdrawal Force: 5N Min.  
Durability: 500 Cycles

- Electrical Specification:**  
Current Rating: 1.5 Ampere per Contact.  
Contact Resistance: 30mΩ Max.  
Insulation Resistance: 1000MΩ Min.  
Dielectric Withstanding Voltage: 500 VAC.

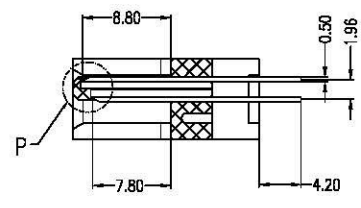
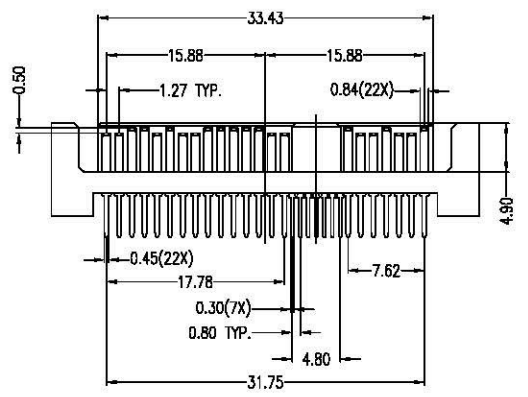
- Environmental:**  
Operating Temperature: 0°C to +55°C



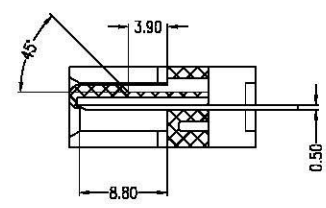
SECT C-C  
SCALE 2:1



VIEW O  
SCALE 3:1



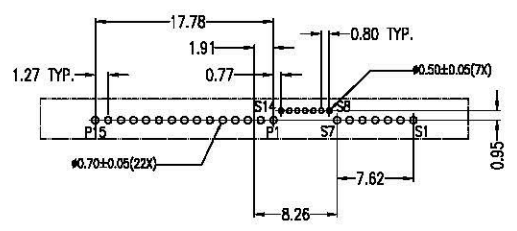
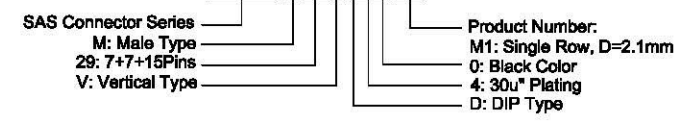
SECT A-A  
SCALE 2:1



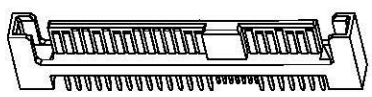
SECT B-B  
SCALE 2:1

**Part Number:**

**CSAS-M29VD40-M1**



PCB LAYOUT(T=1.60mm)  
COMPONENT SIDE



A		11/08/10		RELEASED FOR PRODUCTION	
REV		DATE		DESCRIPTION	
UNLESS OTHERWISE SPECIFIED, DIMENSIONS ARE IN MM TOLERANCES ARE:					
DECIMALS		ANGLES			
X ± .38		± 3°			
.XX ± .25					
.XXX ± .20				www.allconnectors.de Tel.: 0049 711 7004008 40794-Heisterkamp 1, Germany info@allconnectors.de Fax: 0049 711 7004004 info@allconnectors.de	
DO NOT SCALE DRAWING		SHEET 1 OF 1		DESCRIPTION: <b>SAS Connector, 7+7+15P Male, Vertical Type Single Row DIP, Pin Length=2.1mm</b> DWG. NO. <b>CSAS-M29-M01</b>	