

Signal Segment			Power Segment		
Pin No.	Type		Pin No.	Type	
S1	GND		P1	V33	
S2	A+		P2	V33	
S3	A-		P3	V33	
S4	GND		P4	GND	
S5	B-		P5	GND	
S6	B+		P6	GND	
S7	GND		P7	V5	
S8	GND		P8	V5	
S9	A1		P9	V5	
S10	A-		P10	GND	
S11	GND		P11	DAS/DSS	
S12	B-		P12	GND	
S13	B+		P13	V12	
S14	GND		P14	V12	
			P15	V12	

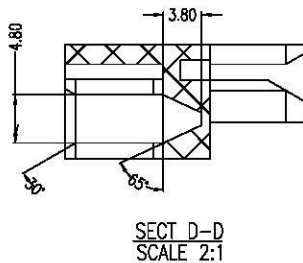
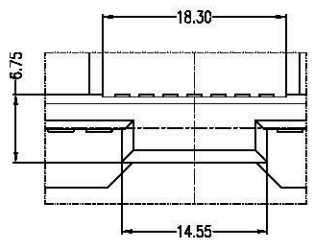
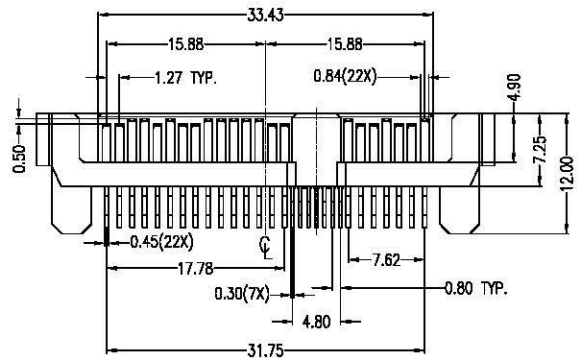
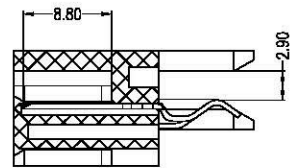
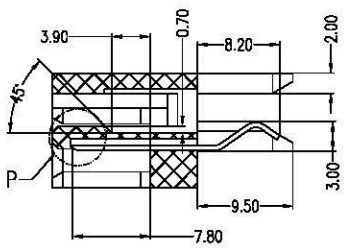
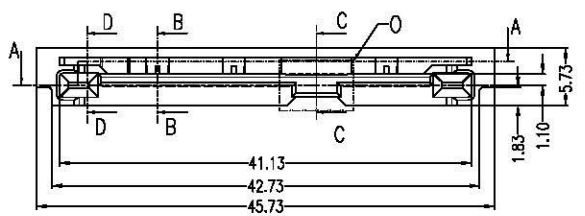
**NOTES:**

- Material:**  
Housing: LCP+50%G.F, UL 94V-0 Rated.  
Color: Black.  
Contact: Phosphor Bronze.  
Plating: Gold Plating over Nickel on Contact Area.  
Tin Plating on Solder Tail.

- Mechanical:**  
Insertion Force: 25N Max.  
Withdrawal Force: 5N Min.  
Durability: 500 Cycles

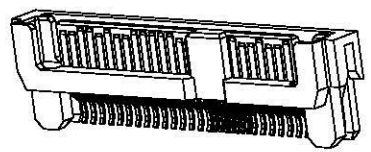
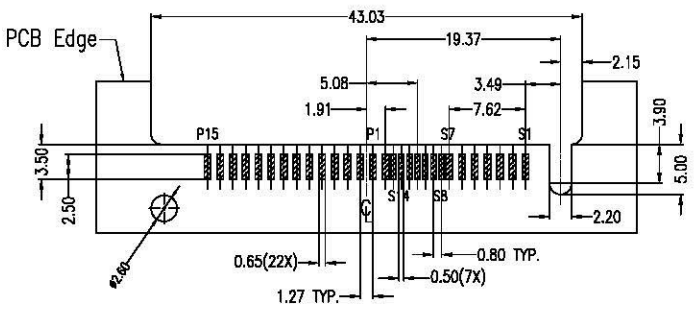
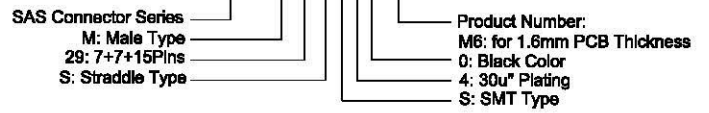
- Electrical Specification:**  
Current Rating: 1.5 Ampere per Contact.  
Contact Resistance: 30mΩ Max.  
Insulation Resistance: 1000MΩ Min.  
Dielectric Withstanding Voltage: 500 VAC.

- Environmental:**  
Operating Temperature: 0°C to +55°C



**Part Number:**

**CSAS-M29SS40-M6**



A		09/13/10		RELEASED FOR PRODUCTION	
REV	DATE	DESCRIPTION			
UNLESS OTHERWISE SPECIFIED, DIMENSIONS ARE IN MM. TOLERANCES ARE:		CAD GENERATED DRAWING, DO NOT MANUALLY UPDATE			
DECIMALS		APPROVALS		DATE	
X ± .38		DRAWN Chris		09/13/10	
.XX ± .25		CHECKED Chdy		09/13/10	
.XXX ± .20		APPV Jason		09/13/10	
DO NOT SCALE DRAWING		SHEET 1 OF 1		SCALE NONE	
		DWG. NO.		CSAS-M29-M06	
		REV.		A	



www.allconnectors.de info@allconnectors.de  
Tel: 0049 411 7009505 Fax: 0049 411 7009504  
Witzlebenstraße 25 Kettwiesestr. 25

DESCRIPTION **SAS Connector, 7+7+15P Male, Straddle Type SMD, for 1.6mm PCB Thickness**