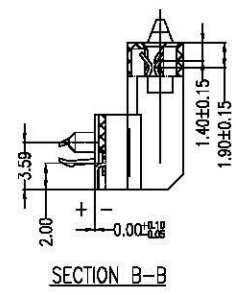
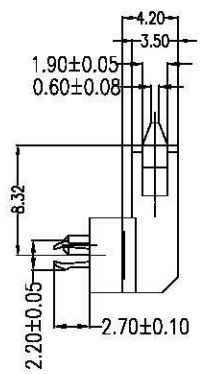
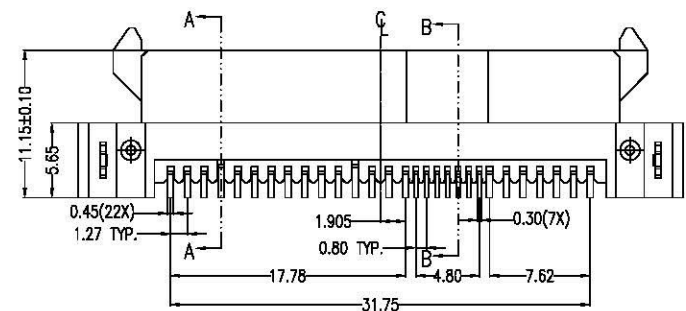
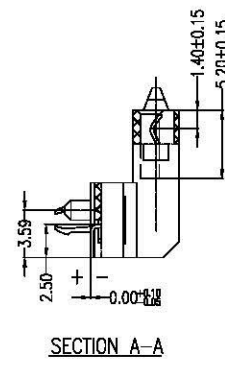
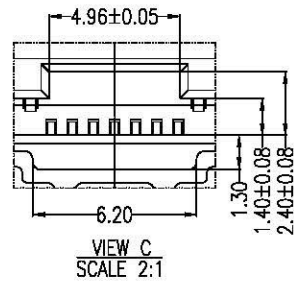
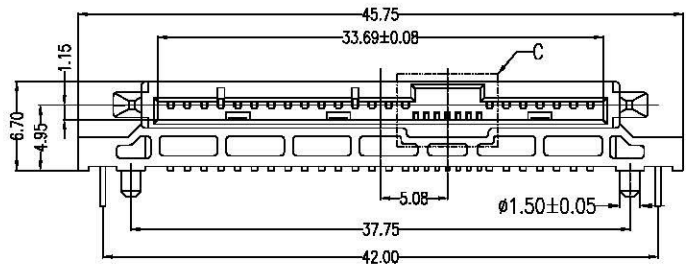


Power Segment				
Pin NO.	Type	Name	Type	
P1	V33	P9	V5	
P2	V33	P10	Ground	
P3	V33	P11	Ready Lead	
P4	Ground	P12	Ground	
P5	Ground	P13	V12	
P6	Ground	P14	V12	
P7	V5	P15	V12	
P8	V5			

Signal Segment				
Pin NO.	Type	Name	Type	
S1	Signal	Ground	S8	Signal
S2	TP+		S9	TS+
S3	TP-		S10	TS-
S4	Signal	Ground	S11	Signal
S5	RP-		S12	RS-
S6	RP+		S13	RS+
S7	Signal	Ground	S14	Signal

NOTES:

- Material:**
 Housing: LCP+50%G.F, UL 94V-0 Rated.
 Color: Black.
 Contact: Phosphor Bronze.
 Plating: Gold Plating over Nickel on Contact Area.
 Tin Plating on Solder Tail.
 Harpoon: Phosphor Bronze.
 Plating: Tin Plating over Nickel.
- Mechanical:**
 Insertion Force: 25N Max.
 Withdrawal Force: 5N Min.
 Durability: 500 Cycles
- Electrical Specification:**
 Current Rating: 1.5 Ampere per Contact.
 Contact Resistance: 30mΩ Max.
 Insulation Resistance: 1000MΩ Min.
 Dielectric Withstanding Voltage: 500 VAC.
- Environmental:**
 Operating Temperature: 0°C to +55°C

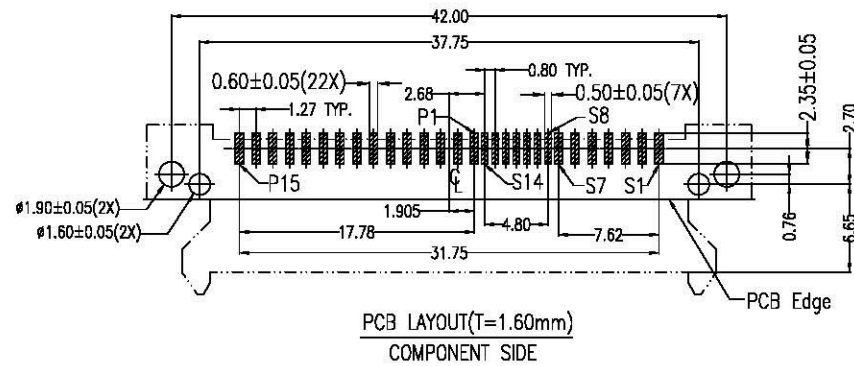
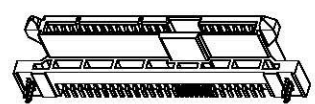


Part Number:

CSAS-F29RS40-F3

SAS Connector Series
 F: Female Type
 29: 7+7+15Pins
 R: Right Angle

Product Number:
 F3: Reverse, H=6.7mm
 0: Black Color
 4: 30u" Plating
 S: SMT Type



A		09/09/10		RELEASED FOR PRODUCTION	
REV	DATE	DESCRIPTION			
UNLESS OTHERWISE SPECIFIED DIMENSIONS ARE IN MM TOLERANCES ARE:		<p>www.allconnectors.de Tel: 0049 711 700503 70794 Hilderstadt - Germany</p> <p>Info@allconnectors.de Fax: 0049 711 700504 Ketteimerstr. 25</p> <p>DESCRIPTION SAS Connector, 7+7+15P Female, Right Angle Reverse Type, SMD, H=6.7mm Height</p>			
DECIMALS	ANGLES				
X ± .38	± 3°				
.XX ± .25					
.XXX ± .20		APPROVALS	DATE	DWG. NO. CSAS-F29-F03	
DRAWN	Chris	09/09/10	SHEET 1 OF 1		SCALE NONE
CHECKED	Chdy	09/09/10	REV. A		
APPV	Jason	09/09/10			
DO NOT SCALE DRAWING					