

NOTES:

***Material**

Housing: LCP(Black),UL 94-0 Rated;
 Contact: Brass;
 Plating: Gold plating over Nickel on contact area; Tin Plating on Solder Tail.

***Mechanical**

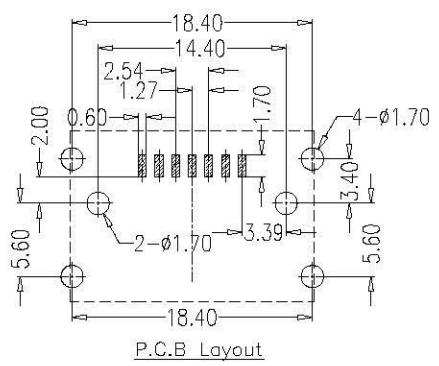
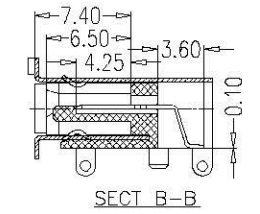
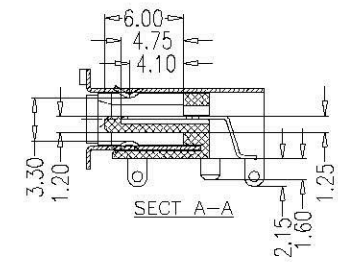
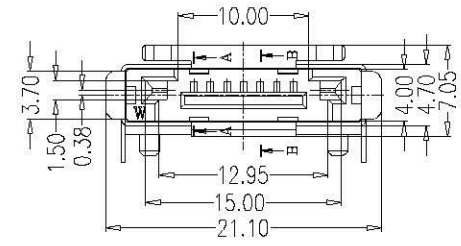
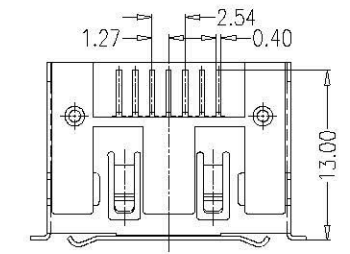
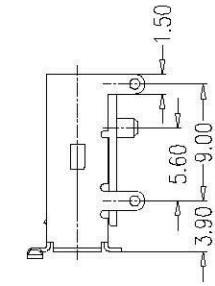
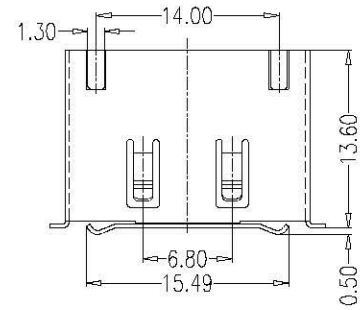
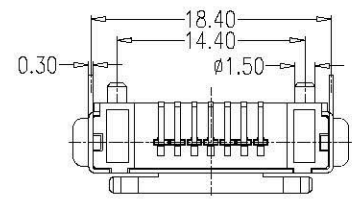
Insertion Force: 4080g max;
 Withdrawal Force: 1020g min;
 Durability: 2500 cycles.

***Electrical Specification**

Operation Voltage:100 VAC max.
 Current Rating: 1.5 Ampere per contact
 Contact Resistance: 30m OHM MAX.
 Insulation Resistance: 1000M OHM MIN
 Dielectric Withstanding Voltage:500VAC.

***Environmental**

Operating Temperature : -55°c to +125°c.



ESATA-PW-07-LF
 LEADFREE

RoHS Compliant



www.allconnectors.de info@allconnectors.de
 TEL: 0049 711 4009104 FAX: 0049 711 4009104
 70734 Filzschluff Germany Kellernbach 25

PART NO. ESATA-PW-07

DWG NO. ESATA-PW-07

FILE NO.

UNIT / mm

SCALE 1:1

CHECKED BY CY

DRAWING BY

PROJECTION

TOLERANCES ARE
 .X±0.2
 .XX±
 .XXX±
 AWG

DESCRIPTION:

SATA II 7Pin Right Angle
 Standard SMT Single Spring

AREA

REVISIONS

HK

DATE