

**NOTES:**

**1.MATERIALS:**

INSULATOR: GLASS FIBER REINFORCED THERMOPLASTIC  
 LCP UL94V-0.  
 CONTACT: PHOSPHOR BRONZE, GOLD FLASH ON CONTACT,  
 TIN PLATED ON TAIL 100µ", OVER NICKEL PLATED 50µ".  
 SHELL: STEEL, NICKEL PLATED.  
 BOARDLOCK: BRASS, TIN PLATED.  
 RIVET: BRASS, NICKEL PLATED.

**2.ELECTRICAL:**

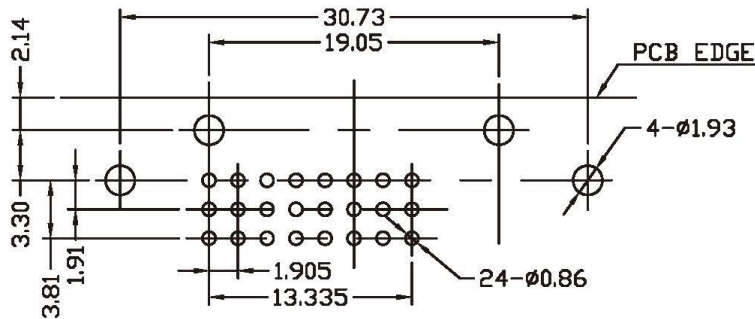
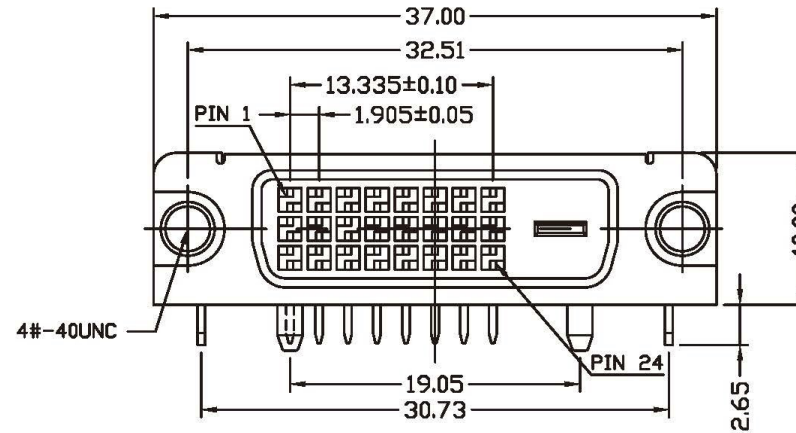
INSULATION RESISTANCE: 1000 MEGOHMS MINIMUM  
 DIELECTRIC WITHSTANDING VOLTAGE: 500V AC  
 VOLTAGE RATING: 40 VOLTS AC(RMS) MAXIMUM  
 CURRENT RATING: 3.0 AMPS PER CIRCUIT  
 CONTACT RESISTANCE: 20 MILLIOHMS MAXIMUM

**3.MECHANICAL PERFORMANCE:**

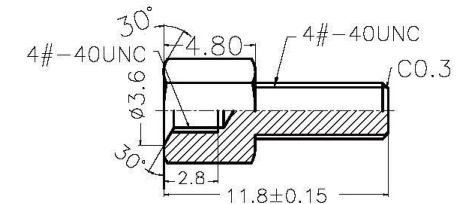
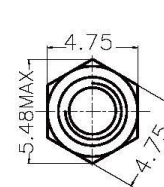
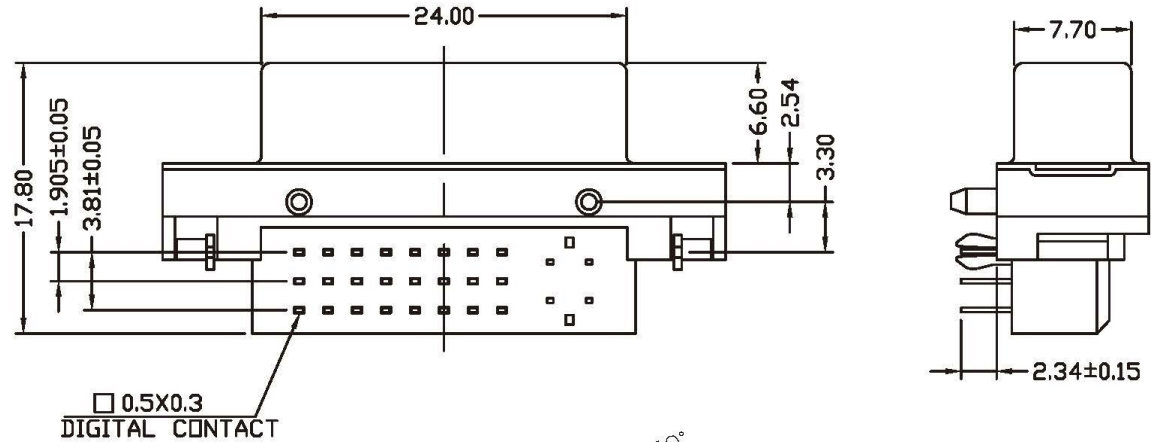
MATING FORCES: 4.5kgf MAXIMUM  
 UNMATING FORCES: 1kgf MINIMUM, 4kgf MAXIMUM  
 DURABILITY: 100 CYCLES MINIMUM

**4.ENVIRONMENTAL:**

TEMPERATURE RANGE: -20°C TO +85°C



PCB LAYOUT (BOTTOM VIEW) TOLERANCE: ±0.05



NOTES  
 1. MATERIAL: BRASS/STEEL

**All Connectors**

www.allconnectors.de info@allconnectors.de  
 Tel.: 0049 711 7009503 Fax: 0049 711 7009504  
 70794 Filderstadt - Germany Kettenmerstr. 25

**RoHS Compliant**

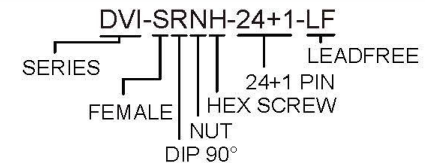
TOLERANCES ARE

DRAWING BY	CY	X ±
CHECKED BY	GENIUS	.X ± 0.38
UNIT/ mm	SCALE 1:1	.XX ± 0.25
DATE		.XXX ±
		ANG ±

SIZE A4 PROJECTION



**ORDER INFORMATION**



DESCRIPTION: DVI 24PIN 母半金白色無後鐵殼(BC)