

Signal Pin assignments Table

Pin	Signal Assignment	Pin	Signal Assignment	Pin	Signal Assignment
1	T.M.D.S.Data2-	9	T.M.D.S.Data1-	17	T.M.D.S.Data0-
2	T.M.D.S.Data2+	10	T.M.D.S.Data1+	18	T.M.D.S.Data0+
3	T.M.D.S.Data2/4 Shield	11	T.M.D.S.Data1/3 Shield	19	T.M.D.S.Data0/5 Shield
4	T.M.D.S.Data4-	12	T.M.D.S.Data3-	20	T.M.D.S.Data5-
5	T.M.D.S.Data4+	13	T.M.D.S.Data3+	21	T.M.D.S.Data5+
6	DDC Clock	14	+5V Power	22	T.M.D.S.Clock Shield
7	DDC Data	15	Ground (return for +5V, HSync, and Vsync)	23	T.M.D.S.Clock+
8	Analog Vertical Sync	16	Hot Plug Detect	24	T.M.D.S.Clock-
C1	Analog Red	C2	Analog Green	C3	Analog Blue
C4	Analog Horizontal Sync	C5	Analog Green (analog R,G,&B return)		

**NOTES:**

- Material:**  
 Body: Nylon66+30%G.F, UL 94V-0 Rated.  
 Color: White.  
 Latch: Nylon66+30%G.F, UL 94V-0 Rated.  
 Color: White.  
 Contact: Brass.  
 Plating: Gold Plating over Nickel on Contact Area.  
 Tin Plating on Solder Tail.  
 Harpoon: Brass.  
 Plating: Tin Plating over Nickel.  
 Shell: SPCC.  
 Plating: Full Nickel Plating.
- Mechanical:**  
 Mating Force: 4.5Kg Max.  
 Unmating Force: 1.0Kg Min and 4.0Kg Max.  
 Durability: 100 Cycles
- Electrical Specification:**  
 Current Rating: 1.5 Ampere per Contact.  
 Shell Resistance: 50mΩ Max Initial, 50mΩ Max.  
 Contact Resistance: 20mΩ Max.  
 Insulation Resistance: 1000MΩ Min.  
 Dielectric Withstanding Voltage: 500V DC RMS ± 50V, 60 HZ.
- Environmental:**  
 Operating Temperature: -20°C to +85°C

A

B

C

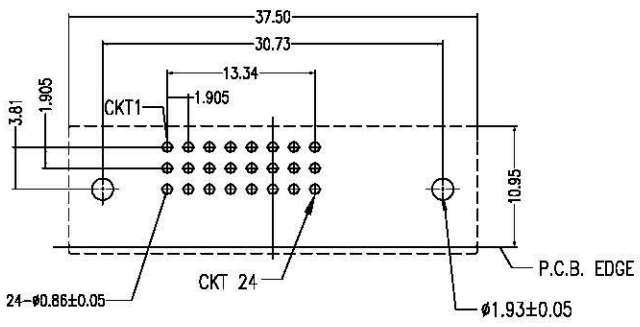
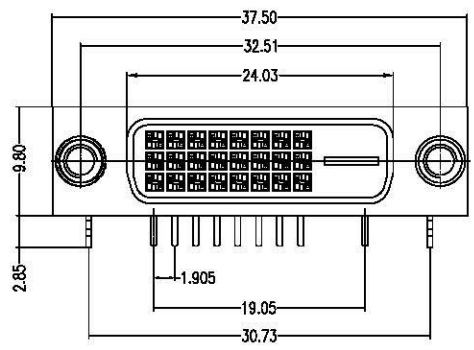
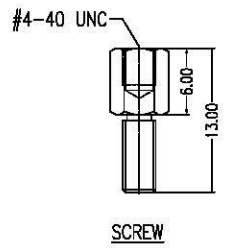
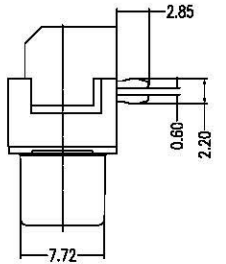
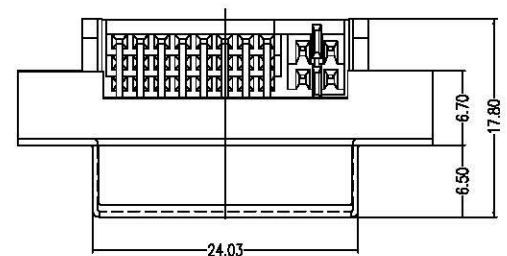
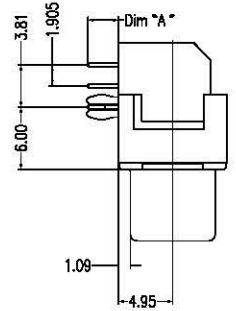
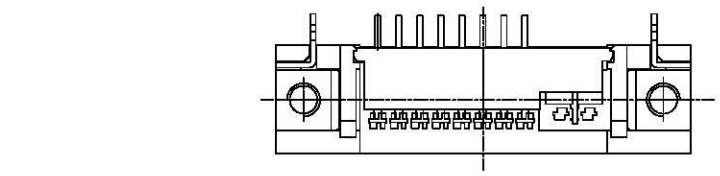
D

A

B

C

D



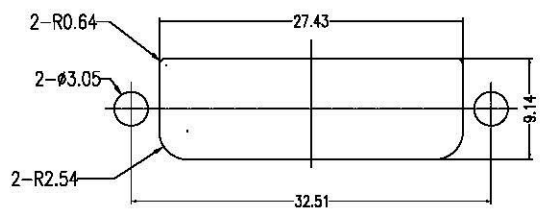
P.C.B. Layout

**Part Number:**

**CDVI- F24RDG1-P1**

DVI Connector Series  
 F: Female Type  
 24: 24Pins  
 R: Right Angle

1: Standard D=2.75mm  
 P: Package with Screw  
 1: White Color  
 G: Gold Flash  
 D: DIP Type



Panel Cutout

Unit:mm

Part Number	Dim "A"
CDVI- F24RDG1-P1	2.75mm
CDVI- F24RDG1-P3	3.30mm

A		06/29/09		RELEASED FOR PRODUCTION	
REV	DATE	DESCRIPTION			
UNLESS OTHERWISE SPECIFIED DIMENSIONS ARE IN MM TOLERANCES ARE:					
DECIMALS ANGLES		APPROVALS		DATE	
X ± .38	± 3°	DRAWN	Chris	06/29/09	
.XX ± .25		CHECKED	Chdy	08/28/09	
.XXX ± .20		APPV	Jason	06/29/09	
DO NOT SCALE DRAWING		SHEET	1 OF 1	SCALE	NONE
		DWG. NO.	CDVI-F24-IP1		REV.
		www.allconnectors.de info@allconnectors.de 111-0044 711 2109203 70790 Hildesheim - Germany Kettensm. 21			
		DESCRIPTION <b>DVI-I Connector, 24Pins, Female Type                  Right Angle, DIP=2.75mm, Package with Screw</b>			