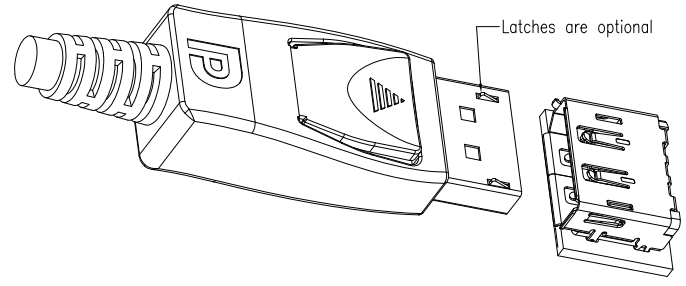
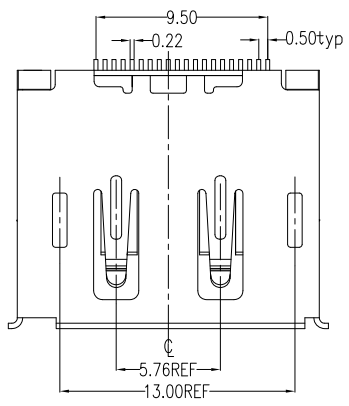
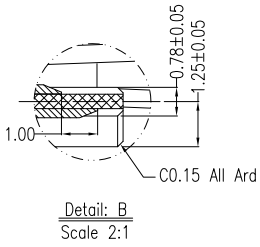


REV.	ECN.NO.	DATE
A	RELEASED	10/11-'07
B	Modify Notes	09/22-'08
C	Modify Drawing	07/10-'10



NOTES:

***Material**

Housing: LCP,UL 94V-0Rated;Color:Black.
 Shield: Brass.
 Plating: Nickle(40~80u") Plating .
 Contact: Brass.
 Plating: Gold Plating Over Nickel(40~80u") on Contact Area; Tin(100~250u") Plating On Solder Tail.

***Electrical Specification**

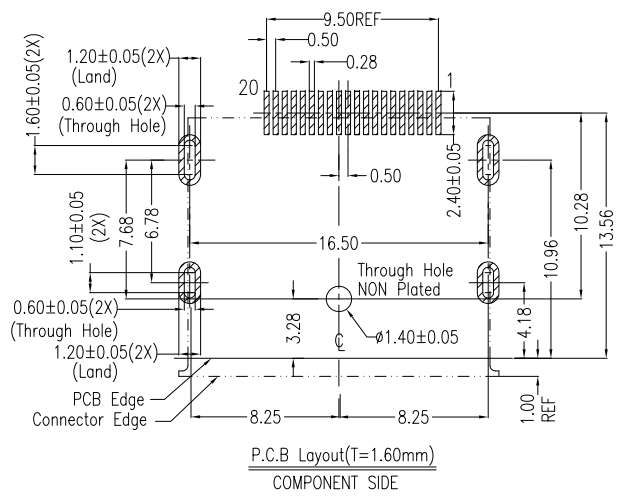
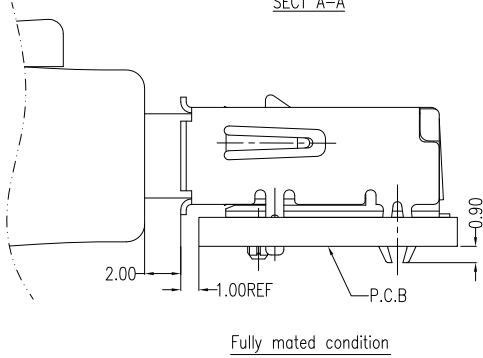
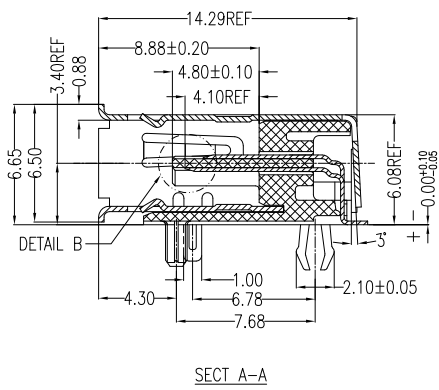
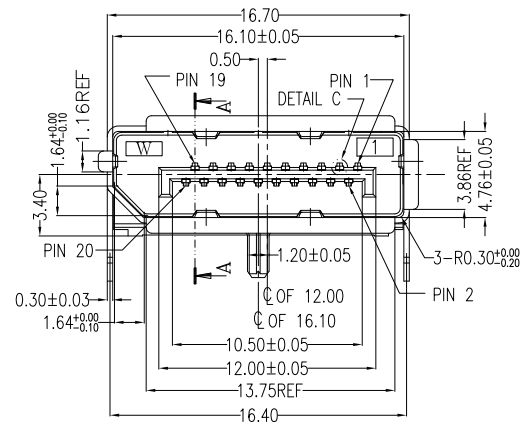
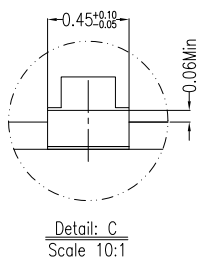
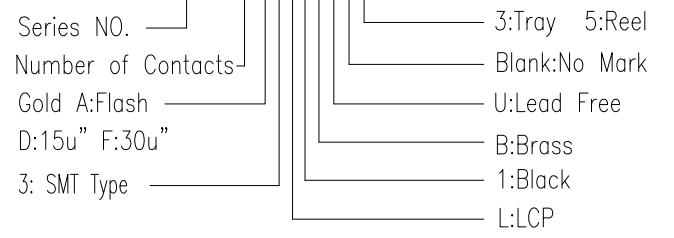
Operation Voltage: 40 VAC max.
 Current Rating: 0.5 Ampere per contact
 Contact Resistance: 30 mΩ max.
 Insulation Resistance: 100 MΩ min.
 Dielectric Withstanding Voltage: 500 VDC

***Environmental**

Operating Temperature: -20°C to +85°C

***How To Order**

WDPE-20F3L1BU 3



Nancy 07/12/10

REV	Modify Drawing: The body increase in plastic and increase the bending angle of shell.			Drawing By		Date	
Units	mm	Scale	1:1	Lulu	07/12/10		
Tolerance Unless Otherwise Specified				Reviewed By	Date		
.X	~ ±0.38			Rosh	07/12/10		
.XX	~ ±0.25			Approval By	Date		
.XXX	~ ±0.20			Richard	07/12/10		
Angle	~ ± 3°			Third Angle Projection		Title	
Date		07/10-'10		Sheet		1 of 1	
Drawing No.		WDPE-20PS-AN-N025		Title		DisplayPort Receptacle (Female) SMT Type	
REV		C		Drawing No.		WDPE-20PS-AN-N025	



www.allconnectors.eu | info@allconnectors.eu
 Tel. +49 (0)711 / 358 110 20 | Fax +49 (0)711 / 358 110 25