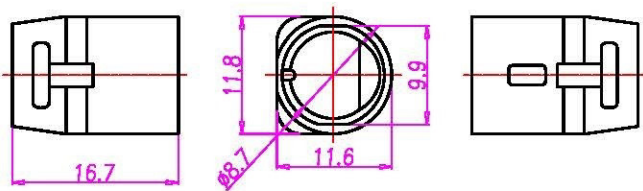


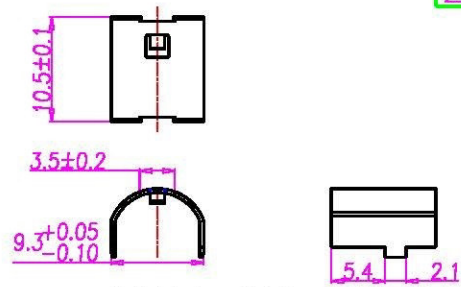
This document is the property of Nian-Yeong Corporation and is delivered on the express condition that it is not to be disclosed, reproduced or used, in whole or in part, for manufacture or sale by anyone other than Nian-Yeong Corporation without its prior consent, and that no right is granted to disclose or to use any information in this document.

# CUSTOMER DRAWING

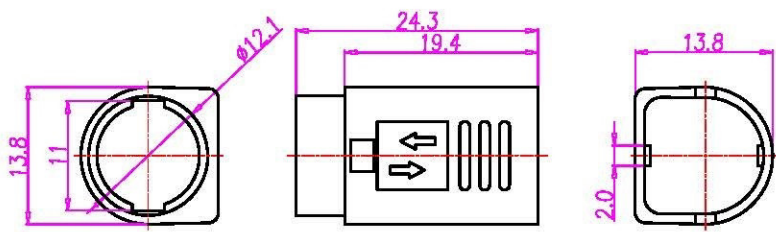
REV.	DESCRIPTION	APPL. BY	DATE	ECN NO.
A	RELEASE	Fido Wang	03/12/13	
B				
C				



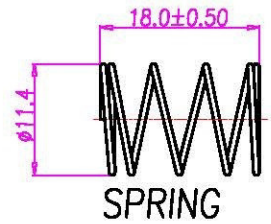
PLASTIC TUBE



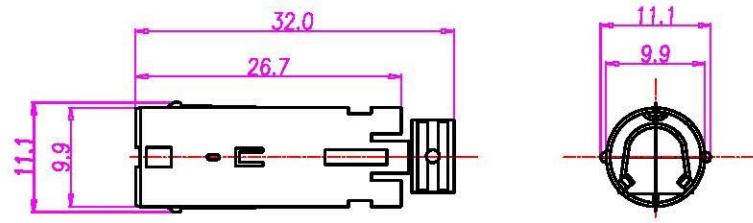
METEL CAP



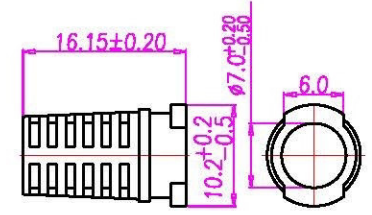
PLASTIC COVER



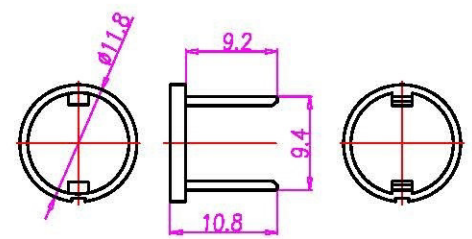
SPRING



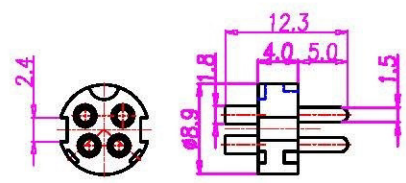
METEL SHELL



SR



POM RING



HOUSING+PIN

- MATERIAL :
  - 1-1. HOUSING : PBT UL94V-0 ; COLOR : BLACK.
  - 1-2. CONTACT : BRASS.
  - 1-3. PLASTIC COVER : ABS ; COLOR : BLACK
  - 1-4. PLASTIC TUBE : ABS OR PC ; COLOR : BLACK
  - 1-5. POM RING : POM ; COLOR : BLACK.
  - 1-6. SR : PVC ; COLOR : BLACK.
  - 1-7. SPRING : CARBPN STEEL OR STAINLESS STEEL
  - 1-8. METAL CAP : BRASS
  - 1-9. METEL SHELL: BRASS
- FINISH :
  - 2-1. CONTACT : 50 MICRO INCHES MIN. SILVER PLATED
  - 2-2. SPRING : NICKEL PLATED 60u" ~ 100u" OVER ALL.
  - 2-3. METAL CAP : NICKEL PLATED 60u" ~ 100u" OVER ALL.
  - 2-4. METEL SHELL : NICKEL PLATED 60u" ~ 100u" OVER ALL.
- ELETRICAL SPECIFICATION :
  - 3-1. RATED CURRENT : 4PIN: 7.5A/DC MAX
  - 3-2. VOLTAGE : 24V/DC MAX
- ENVIRONMENTAL :
  - 4-1. OPERATION TEMPERATURE : -20 °C~85°C.

DRAW	Ku Chou	APPVL	Emily Suen	UNIT	mm	TOLERANCE			TITLE	PowerDin 4(M) <del>4M2-29</del> CONSR=7.0			SHEET	
CHECK	Emily Suen			SCALE	1:1	ANGULA			±1°	PART NO.	PD-04M2-29	DWG NO.	QC0962	

www.allconnectors.de  
Tel: 0049 711 700593  
02094 Hildebrandt Germany

info@allconnectors.de  
Fax: 0049 711 700594  
Kontakt@allconnectors.de