

REV.	ECN.NO.	DATE
A	RELEASED	10/21/08
B	REV PART NO	09/16/09

NOTES

*** Material:**

Body: Nylon46+30%G.F,Glass Filled UL 94-0 Rated,Color:Black;
 Ejector: Nylon66, Glass Filled UL 94V-2 Rated, Color:Ivory;
 Latch: Nylon46+30%G.F, Glass Filled UL 94V-0 Rated; Color: Black.
 Contact: Brass
 Contact Plating: Gold Plating Over Nickel On Contact Area
 Tin Plating On Solder Tail;
 Harpoon: Phosphor Bronze
 Harpoon Plating: Tin plating over Nickel.

*** Mechanical:**

Retention Force-Terminal: 350 Grams MIN. Per;
 Insertion Force: 40~120 Grams/Contact pair
 Unmating Force: 20 Grams (Min)/Contact pair

*** Electrical Specification:**

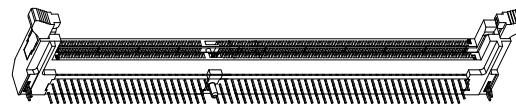
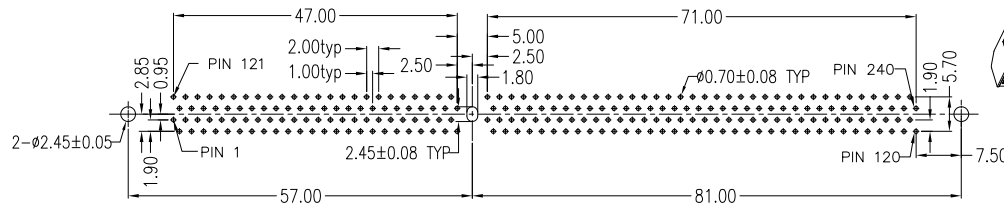
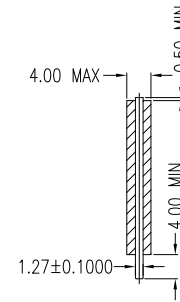
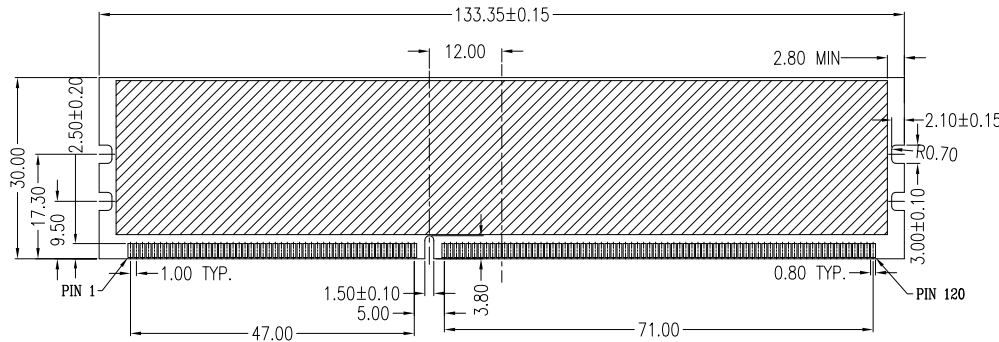
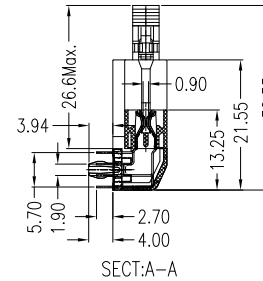
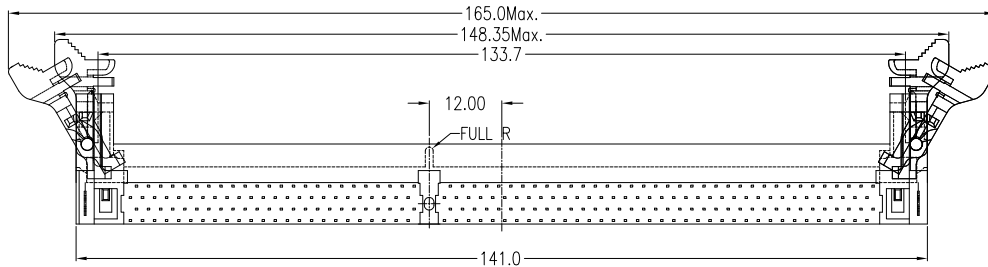
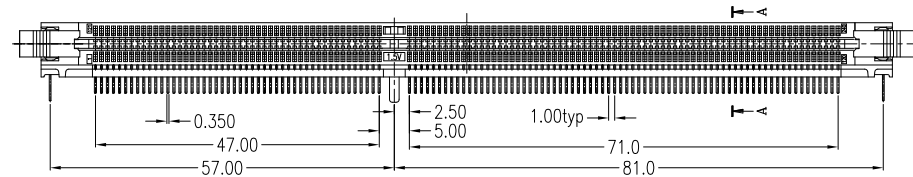
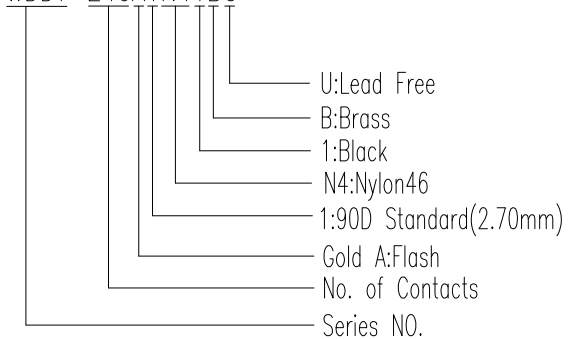
Contact Resistance: 30 Milliohms MAX. Initial;
 Insulation Resistance: 1000 Megohms MIN. AT 500 VDC
 Withstand Voltage: 500 V AC,

*** Environmental:**

Operating Temperature: -55°C TO +105°C

*** How To Order:**

WDDT-240A1N41BU



P.C.B LAYOUT
TOP VIEW

RECOMMENDED MODULE LAYOUT

REV	Modify PART NO			Drawing By	Data	 <small>www.allconnectors.eu info@allconnectors.eu Tel: +49 (0)711 / 358 110 20 Fax: +49 (0)711 / 358 110 25</small>		Title DDR3-240 Pins 90D Connector	
Units	mm	Scale	1:1	Lulu	09/16/09				
Tolerance Unless Otherwise Specified				Reviewed By	Data	Date	09/16/09	Sheet 1 of 1 Third Angle Projection Drawing No. WDDT-240PS-AN-W065 REV B	
.X ~ ±0.38				Rosh	09/16/09				
.XX ~ ±0.25				Approval By	Data				
.XXX ~ ±0.20				Roger	09/16/09				
Angle ~ ± 3°									