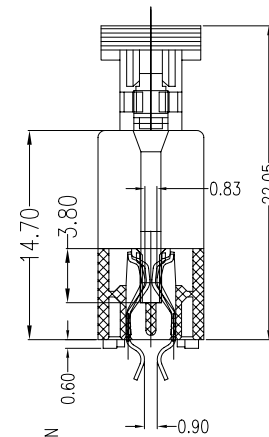
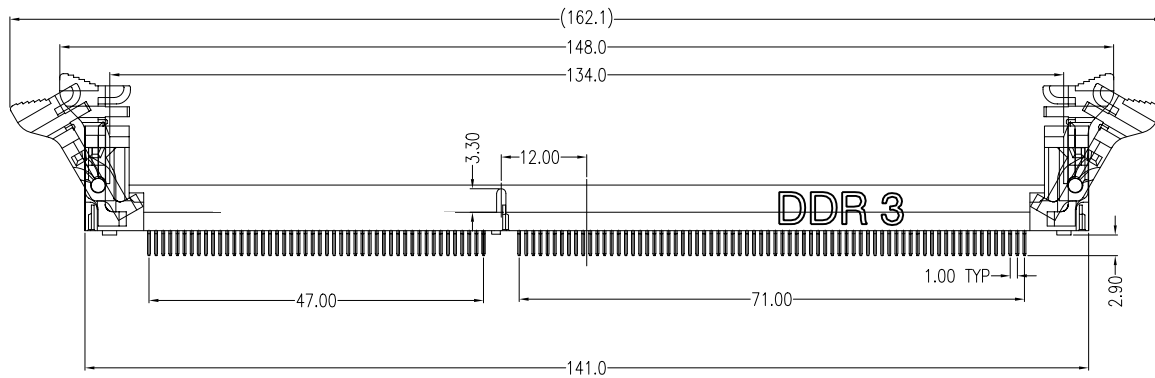
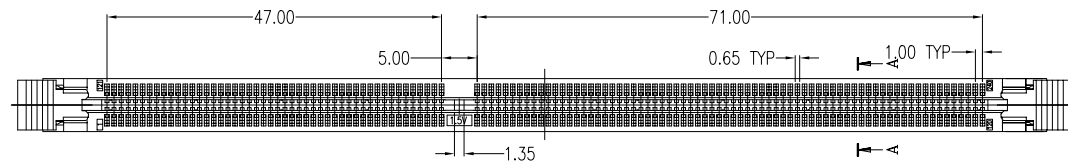
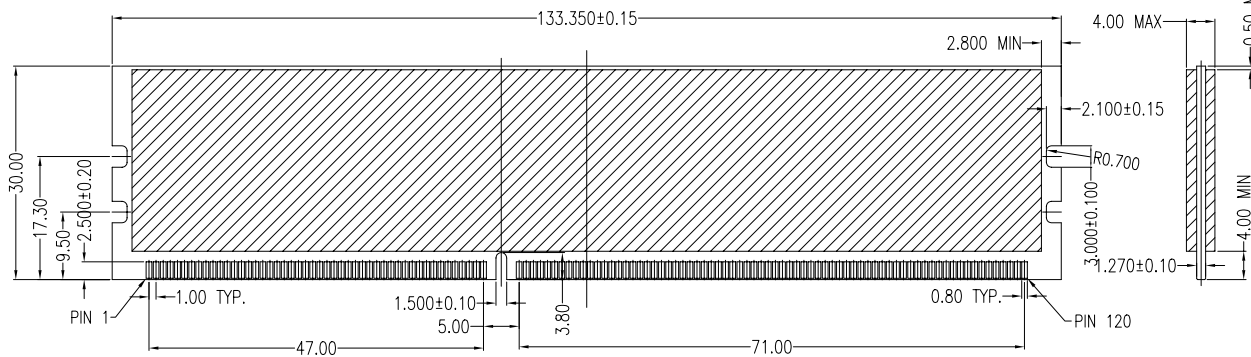


REV.	ECN.NO.	DATE
A	RELEASED	01/30/07



SECT:A-A
SCARE:2:1



RECOMMENDED MODULE LAYOUT

NOTES

***MATERIAL:**

BODY: Nylon6T, UL 94V-0 RATED
COLOR: Black

EJECTOR: Nylon66+30%G.F,UL 94V-0 RATED
COLOR: Ivory

CONTACT: Brass

CONTACT PLATING: Gold Plating Over Nickel On Contact
Area Tin Plating On Solder Tail

*** MECHANICAL:**

RETENTION FORCE-TERMINAL: 300 Grams Min. Per
INSERTION FORCE: 35 lb. Max.
UNMATING FORCE: 14 Grams Min. Per Pin Pair

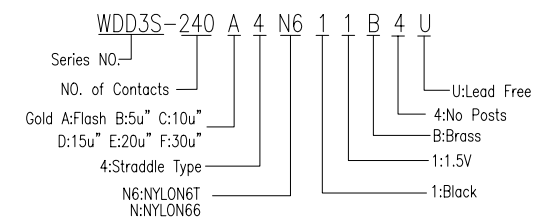
*** ELECTRICAL SPECIFICATION**

CONTACT RESISTANCE: 30 Milliohms Max. Initial
INSULATION RESISTANCE: 1000 Megohms Min.
WITHSTAND VOLTAGE: 500 V AC, AT 500 VDC

*** ENVIRONMENTAL:**

OPERATING TEMPERATURE: -55°C TO +105°C

***How To Order**



REV	Units	mm	Scale	1:1	Drawing By	Data	 <small>www.allconnectors.eu info@allconnectors.eu Tel: +49 (0)711 / 358 110 20 Fax +49 (0)711 / 358 110 25</small>				
	Tolerance Unless Otherwise Specified				Stacy	01/30/07				Date	01/30/07
	.X	±0.38			Reviewed By	Data	Third Angle Projection	Title	DDR3-240 Pins Straddle Type		
	.XX	±0.25		Roger	01/30/07	Date					01/30/07
	.XXX	±0.20		Approval By	Data	Richard					01/30/07
	Angle	± 3°						Drawing No.	WDD3S-240PS-AN-W052	REV	A