

SWITCH CIRCUIT			MATERIAL AND FINISH AS BELOW						
WHEN CARD IS EJECTED	WHEN CARD IS INSERTED	A	Housing	LCP UL94V-0 Black	E				
		B	Contact	Phosphor Bronze C5210, Contact Area: Gold Flash	F				
		C	Latch	Stainless Steel SUS301	G				
		D			H				



NOTES:
 DATE CODE 2202 (YWWD)
 Y: 2 YEAR(2012)
 WW:20 WEEK(01~52)
 D: 2 DAY(01~07)

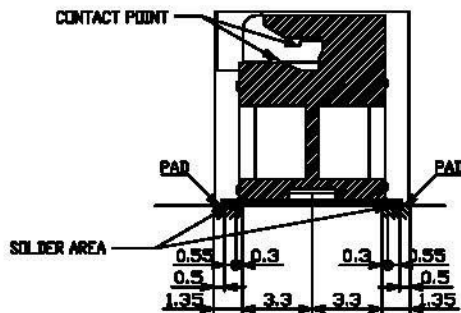
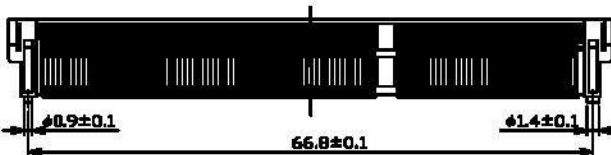
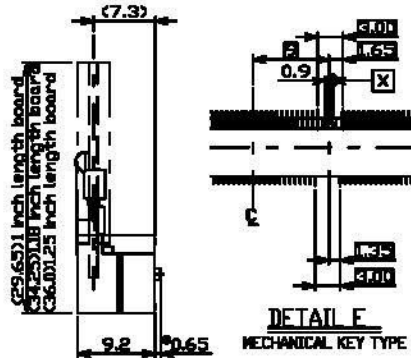
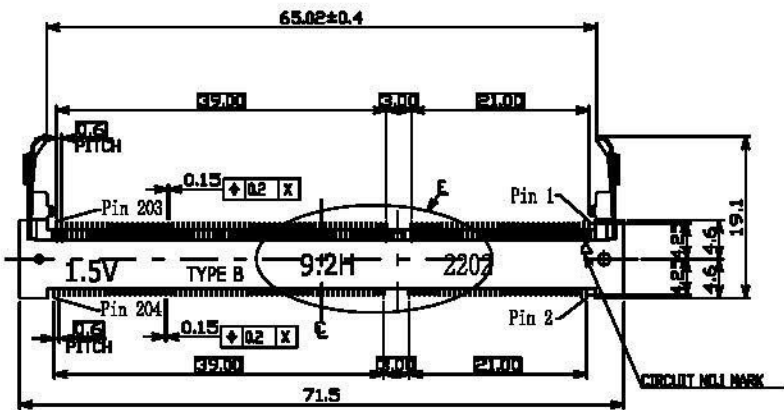
SPECIFICATION:

- 1. ELECTRICAL**
 - 1.1 Current Rating: 0.5A per pin
 - 1.2 Voltage Rating: 25V AC/DC
 - 1.3 Contact Resistance: 60mΩ
 - 1.4 Insulation Resistance: 500MΩ
 - 1.5 Dielectric Withstanding Voltage: 125VAC

- 2. MECHANICAL**
 - 2.1 Durability: 25 Cycle
 - 2.2 Latch Retention Force: 8 N/Pos. Min

- 3. ENVIRONMENTAL**
 - 3.1 Operating temperature range: -40°C~+85°C
 - 3.2 Storage temperature range: -40°C~+85°C

- 4. SOLDER ABILITY**
 - 4.1 Recommended IR Reflow Temperature: 255°C 10Sec



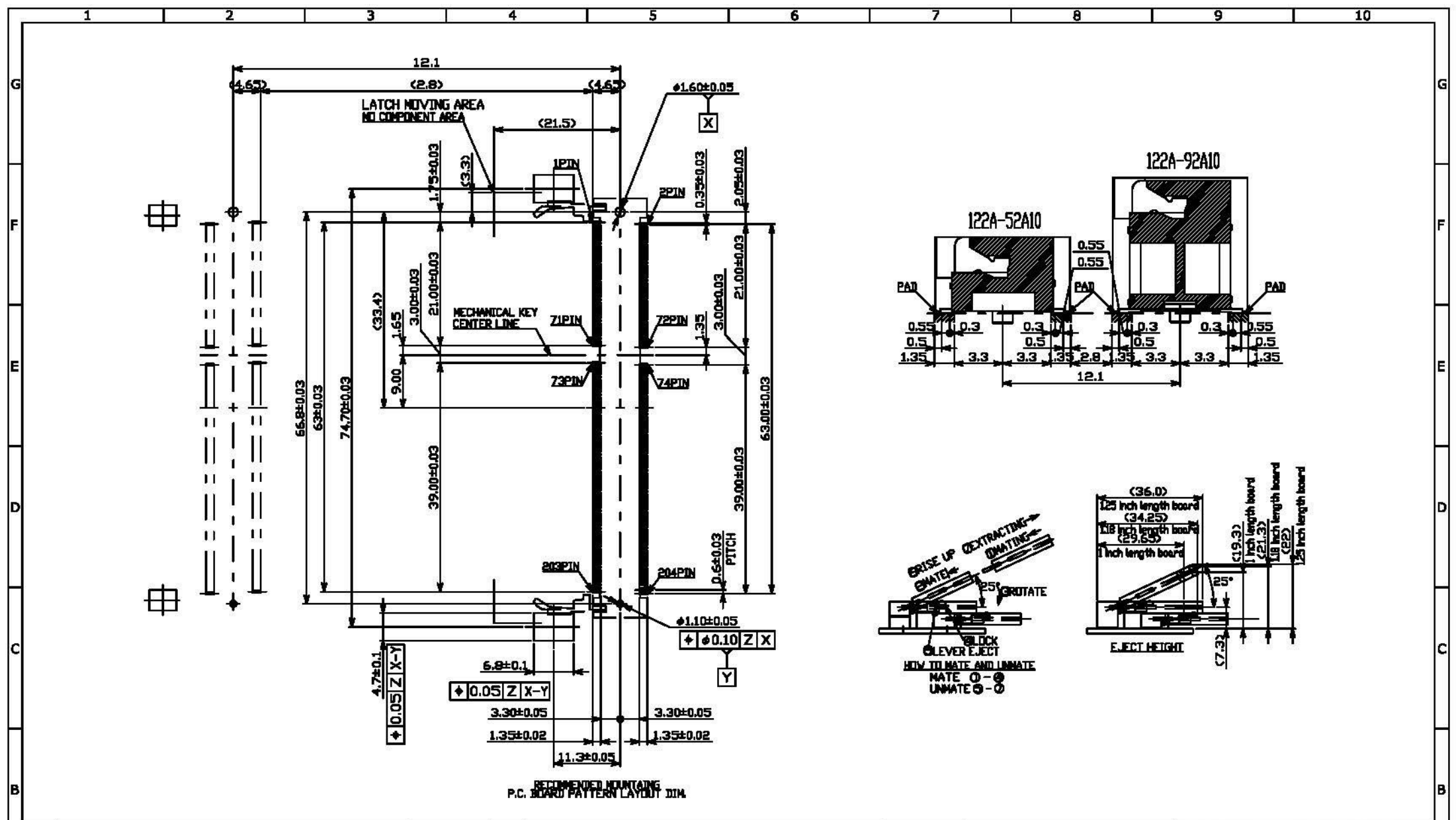
P1	P2	P3	P4	P5	P6	P7	P8	P9	P10	P11	P12
----	----	----	----	----	----	----	----	----	-----	-----	-----

PIN ASSIGNMENT

122A-92A10	SO DIMM DDR3 Socket 1.5V 204Pin Reverse Type 9.2H, Contact Area: Gold Flash
------------	---

PRODUCT NO.	DESCRIPTION	
	ANGLES ANG. ±5° 0. ±0.3 LINEAR 0.0 ±0.25 0.00 ±0.20	www.allconnectors.de info@allconnectors.de TEL: 0049 711 3002500 FAX: 0049 711 3002504 70734 Filberstadt - Germany tellern@allconnectors.de
	SCALE AS SHOWN	UNIT: mm
	DRAWN Willis	2012/12/05
	CHECKED Angel	2012/12/05
	APPROVED Ken	2012/12/05
	DRAWN NAME: SO DIMM DDR3 Socket 1.5V 204Pin 9.2H Reverse Type	
	PRODUCT NO.	122A-92A10
	FILE NAME	122A-92A10_B_1

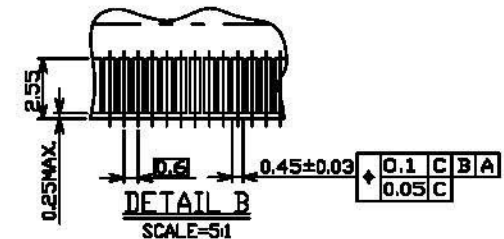
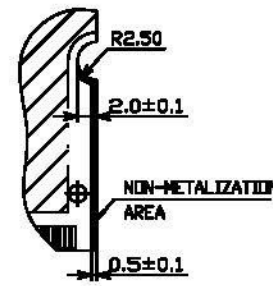
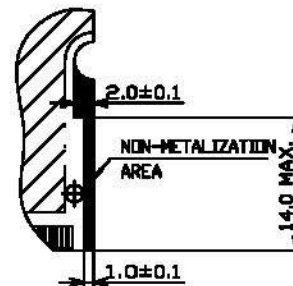
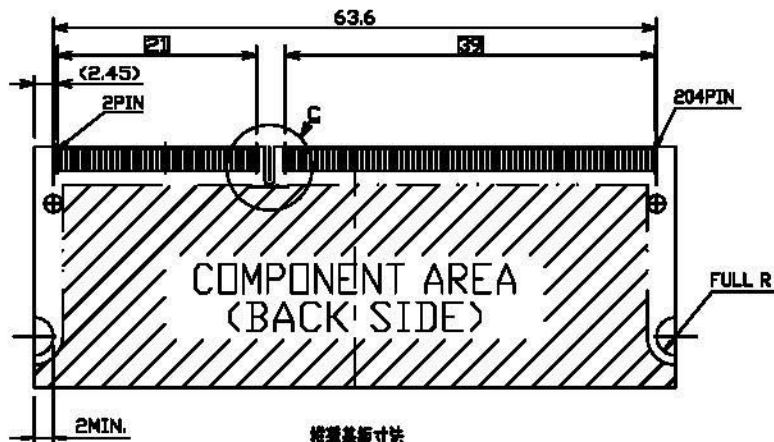
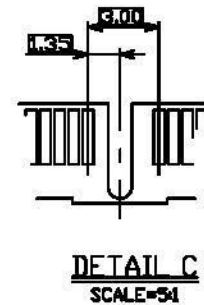
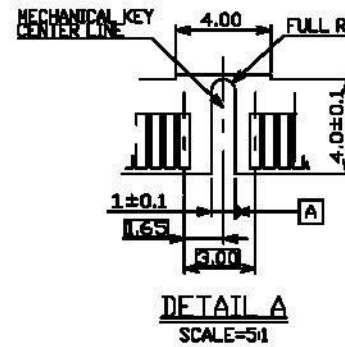
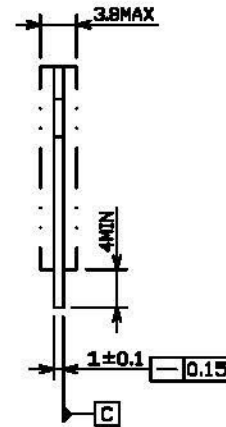
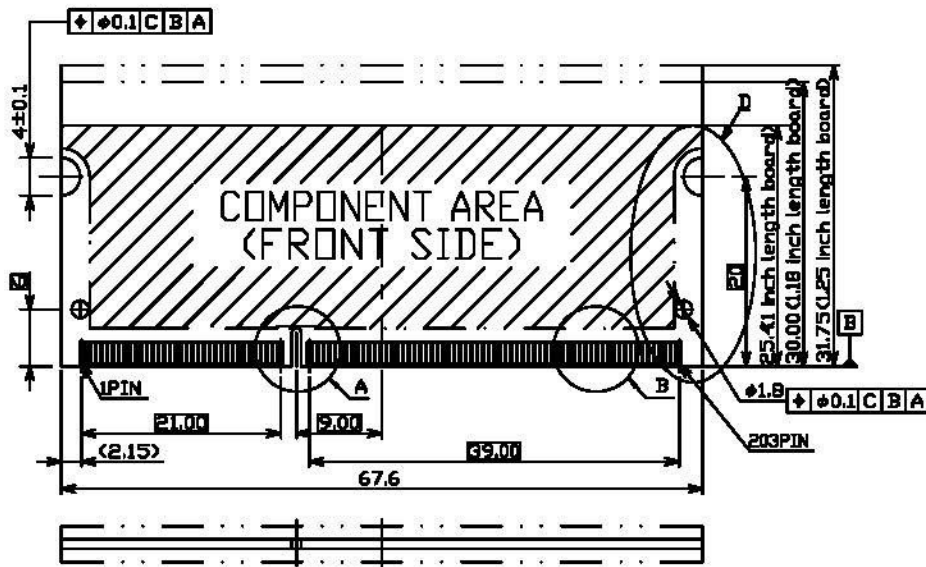
Revise:											
Revise:											
Revise:											
REV.	DESCRIPTION	DATE	REV.	DESCRIPTION	DATE	SIZE	REV.	FILE NAME			
1			4			M	1.0	122A-92A10_B_1			



REV.	DESCRIPTION	DATE	REV.	DESCRIPTION	DATE	SIZE	REV.	FILE NAME
1			4			M	1.0	122A-92A10_B_1
2			5					
3			6					

UNLESS OTHERWISE SPECIFIED TOLERANCE			All Connectors			
ANGLES	ANG.	±FP	www.allconnectors.com TEL: 908-711-7000 FAX: 908-711-7000			
LINEAR	0.	±0.3			INFO@allconnectors.com 1000 Hillside Blvd. - Suite 100 Edison, NJ 08817	
	0.0	±0.25				
	0.00	±0.20				
SCALE	AS SHOWN	UNIT: mm	DRAWN NAME: SO DIMM DDR3 Socket			
DRAWN	Willis	2012/12/05	1.5V 204Pin 9.2H Reverse Type			
CHECKED	Angel	2012/12/05	PRODUCT NO.	122A-92A10		
APPROVED	Ken	2012/12/05				

△	Revise:							
△	Revise:							
△	Revise:							



推奨基板寸法
RECOMMENDED MOUNTING
P.C. BOARD DIM.

UNLESS OTHERWISE SPECIFIED TOLERANCE		
ANGLES	ANG.	±5°
LINEAR	0.	±0.3
	0.0	±0.25
	0.00	±0.20
SCALE	AS SHOWN	UNIT: mm
DRAWN	Willis	2012/12/05
CHECKED	Angel	2012/12/05
APPROVED	Ken	2012/12/05

All Connectors

www.allconnectors.de info@allconnectors.de
Tel: 0049 211 7009300 Fax: 0049 211 7009309
47484 Mikrostadt, Germany info@mcnc.de

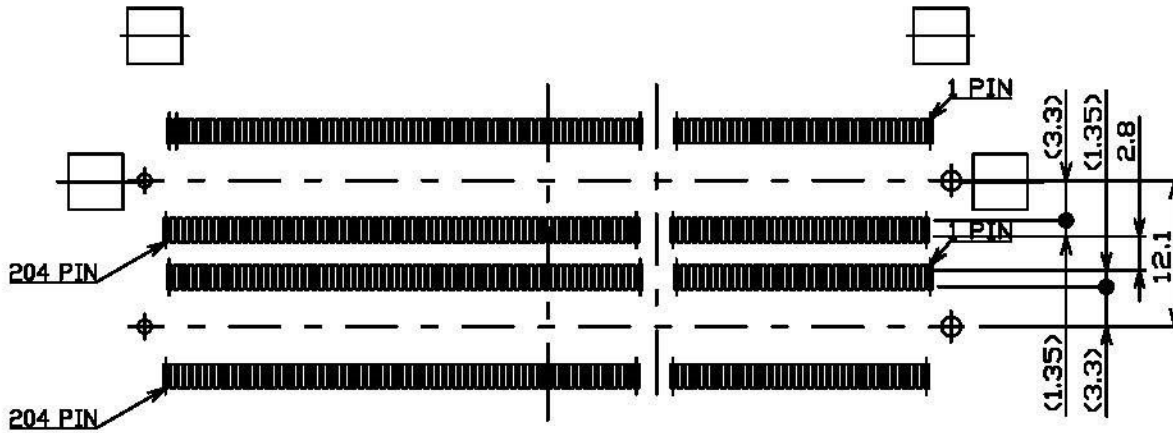
DRAWN NAME:
SO DIMM DDR3 Socket 1.5V 204Pin 9.2H Type

PRODUCT NO. 122A-92A10

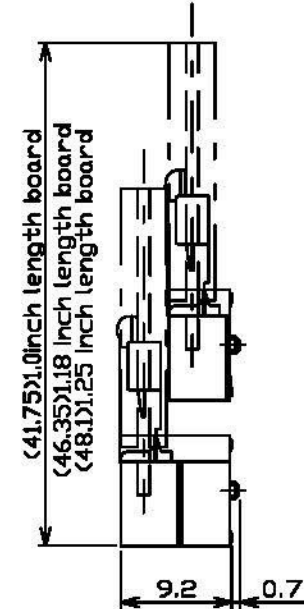
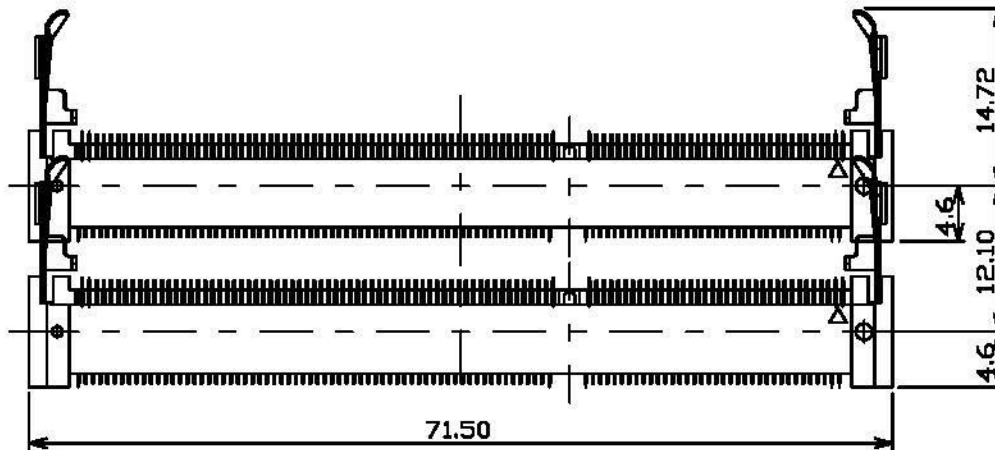
FILE NAME 122A-92A10_B_1

- △ Revise:
- △ Revise:
- △ Revise:

REV.	DESCRIPTION	DATE	REV.	DESCRIPTION	DATE	SIZE	REV.	FILE NAME
1						A4	1.0	122A-92A10_B_1



RECOMMENDED MOUNTING
P.C. BOARD PATTERN LAYOUT DIM.



Combination Dimension for H=5.2 connector
(Only the combination of the P/N 122A-52A10 (H=5.2) and 122A-92A10 (H=9.2) is possible.)

UNLESS OTHERWISE SPECIFIED TOLERANCE		
ANGLES	ANG.	±5°
LINEAR	0.	±0.3
	0.0	±0.25
	0.00	±0.20
SCALE	AS SHOWN	UNIT: mm
DRAWN	Willis	2012/12/05
CHECKED	Angel	2012/12/05
APPROVED	Ken	2012/12/05

All Connectors
www.allconnectors.de
 TEL: 0049 710 200101
 30714 Hildesheim - Germany

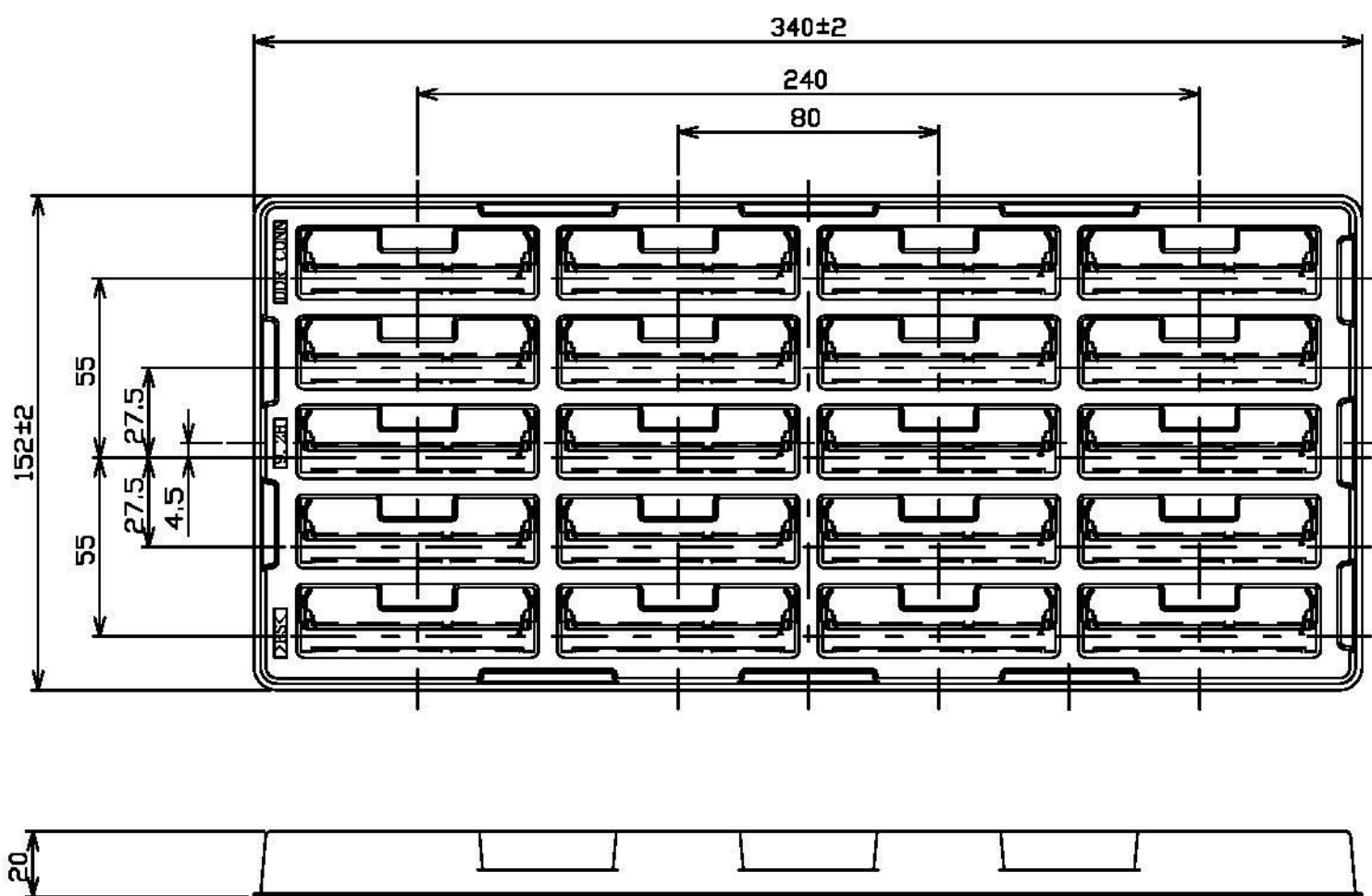
info@allconnectors.de
 TEL: 0049 710 200104
 KEMPERSTR. 25

DRAWN NAME: SO DIMM DDR3 Socket
1.5V 204Pin 9.2H Reverse Type

PRODUCT NO. 122A-92A10
FILE NAME 122A-92A10_B_1

- △ Revise:
- △ Revise:
- △ Revise:

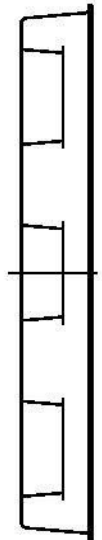
REV.	DESCRIPTION	DATE	REV.	DESCRIPTION	DATE	SIZE	REV.	FILE NAME
1			4			A4	1.0	122A-92A10_B_1



PACKAGING SPECIFICATION:

1. PACKING

- 1.1 Quantity:**
- 20 Piece/Tray**
- 160 Piece/Inner Carton**
- 480 Piece/Outer Carton**



SOFT TRAY PACKAGING

						UNLESS OTHERWISE SPECIFIED TOLERANCE ANGLES ANG. ±SP LINEAR 0.0 ±0.3 0.00 ±0.25 0.00 ±0.20				
						SCALE	AS SHOWN	UNIT:		
						DRAWN	Willis	2012/12/05	DRAWN NAME:	
						CHECKED	Angel	2012/12/05	SO DIMM DDR3 Socket	
						APPROVED	Ken	2012/12/05	1.5V 204Pin 9.2H Reverse Type	
						PRODUCT NO.	122A-92A10		FILE NAME	
						SIZE	A4	REV.	1.0	
						FILE NAME		122A-92A10_D_1		
REV.	DESCRIPTION	DATE	REV.	DESCRIPTION	DATE					
1			4							

- △ Revise:
- △ Revise:
- △ Revise:

www.allconnectors.de info@allconnectors.de
 Tel: +49 711 2049316 Fax: +49 711 2049342
 · 40191 Hildesheim · Germany kettenrsto.de