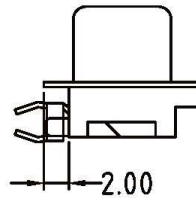
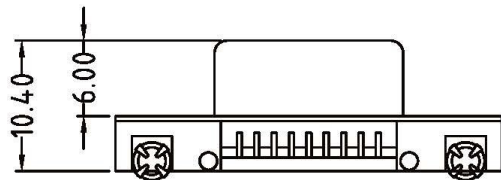


### ELECTRICAL CHARACTERISTICS

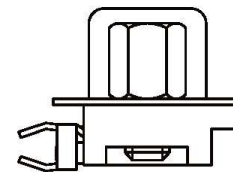
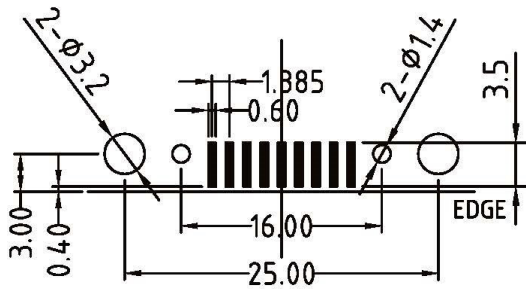
Contact Current Rating: 1Amperes.  
 Dielectric Withstanding Voltage: AC 500V at sea level.  
 Insulation Resistance: 1000Megohms Min.  
 Contact Resistance: 30Milliohms Max.  
 Operation Temperature : -55°C to +105°C.

### Material

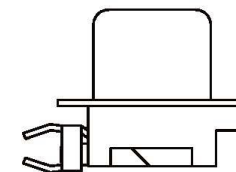
Contact : Copper Alloy.  
 Insulator: LCP. **(Select PA6T /PA9T)**  
 Shell: SPCC.  
 Z-Piece: Copper Alloy.



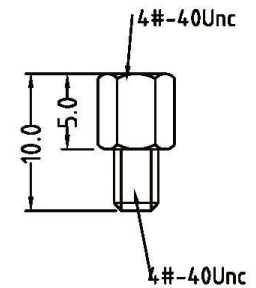
### RECOMMEND PCB LAYOUT



DW-SNJZ4-09



DW-SNHZ4-09



**All Connectors**  
 www.allconnectors.de  
 Tel.: 0049 711 7009503  
 70794 Filderstadt - Germany

info@allconnectors.de  
 Fax: 0049 711 7009504  
 Kettnerstr. 25

**RoHS Compliant**

DRAWING BY CY  
 CHECKED BY GENIUS  
 UNIT/ mm SCALE 1:1  
 DATE  
 SIZE A4

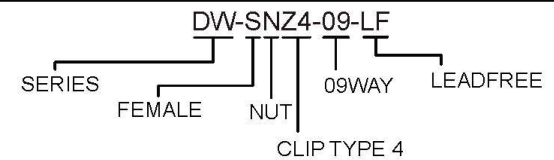
TOLERANCES ARE

X ±  
 .X ±  
 .XX ±  
 .XXX ±  
 ANG ±

PROJECTION



### ORDER INFORMATION



DESCRIPTION: