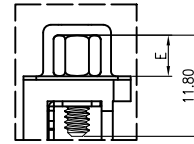
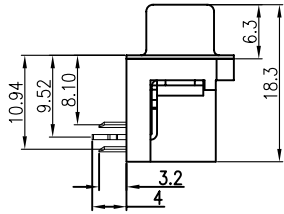
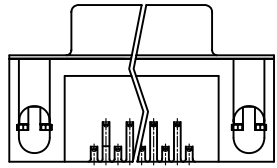
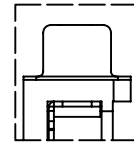
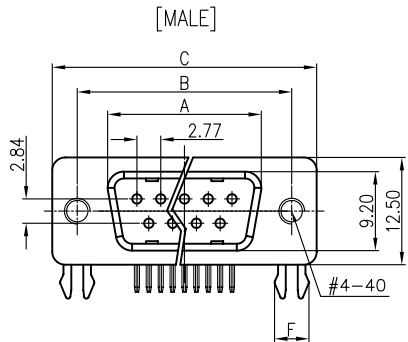


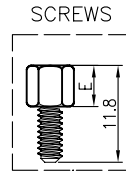
RECOMMEND PCB LAYOUT(TOLERANCE  $\pm 0.05$ )  
(VIEW FROM TOP SIDE)



WITH SCREW TYPE

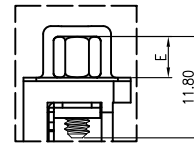
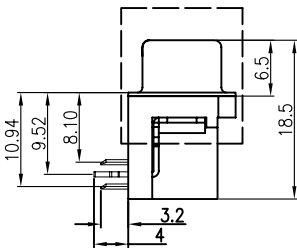
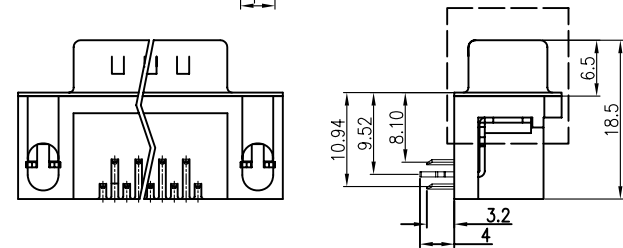


WITH RIVET TYPE



SCREWS  
Inside screw thread  
Outside screw thread

Screw figure



WITH SCREW AND RIVET TYPE

Dimension

Position	A $\pm 0.2$	B $\pm 0.2$	C $\pm 0.2$	D
9	17.90	24.99	30.84	16.33
15	26.50	33.32	39.14	24.66
25	40.00	47.04	53.04	38.38
37	56.50	63.50	69.32	54.84

REV.	DESCRIPTION	DRAWN	CHECKED	APPROVED
A	NEW RELEASE	LJH 05/13/06'		LJC 05/13/06'
B	ADD SCREW TYPE	DMJ 06/27/07'		LJC 06/27/07'
C	整理图画	YCH 09/22/07'		LJC 09/22/07'
D	增加端子电镀全锡	YCH 03/12/08'		LJC 03/12/08'
E	ADD SCREW TYPE	YCH 05/28/09'		

NOTES:

- PRODUCTS PERFORMANCE:
  - VOLTAGE RATING: 250V AC.
  - CONTACT CURRENT RATING: 1.5A MAX. PER PIN.
  - CONTACT RESISTANCE: 20m $\Omega$  MAX.
  - DIELECTRIC WITHSTANDING VOLTAGE: 500V AC(rms) FOR 1 MINUTE.
  - INSULATION RESISTANCE: 1000M $\Omega$  MINI.
  - TEMPERATURE RANGE: -45°C~+105°C.
- PRODUCT NUMBER CODE:

- DS1037 - X X X X X X X X
- SCREW DIM. E
    - 4: 4.80mm
    - 5: 5.80mm
    - 6: 4.80mm(inside thread M2.6\*0.45p, outside thread unc#4-40)
    - M3: 4.80mm(inside thread M3.0, outside thread unc#4-40)
  - BOARD LOCK DIM. F
    - 4: 4.00mm
    - 7: 3.70mm
  - CONTACT PLATING
    - T: SELECTIVE GOLD FLASH
    - Si: FULL GOLD FLASH
    - 6: FULL TIN
  - COLOR OF HOUSING
    - K: BLACK
    - B: BLUE
  - SCREW TYPE
    - A: WITH SCREW TYPE
    - B: WITH RIVET TYPE
    - C: WITH SCREW AND RIVET TYPE
    - D: RIVET TYPE WITH SCREWS IN BULK PACKAGE
    - E: WITH RIVET TYPE(N/A THREAD)
  - SHELL PLATING
    - N: Nickel
    - T: Tin
  - CONNECTOR TYPE
    - M: MALE
    - F: FEMALE
  - No. OF CONTACT
    - 09: 9pos. 25: 25pos.
    - 15: 15pos. 37: 37pos.

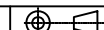
GENERAL TOLERANCE

X.	$\pm 0.60$
.X	$\pm 0.38$
.XX	$\pm 0.25$

ANGLE TOLERANCE

X.	$\pm 5^\circ$
.X	$\pm 3^\circ$
.XX	$\pm 2^\circ$

PROJECTION



TITLE

UNITS mm D-SUB RIGHT ANGLE(7.2mm) TYPE

SHEET SIZE

A4

SERIES

DS1037 SERIES

DRAWING TYPE

CUSTOMER

SCALE

1:1

SHEET

1 OF 1

DRAWING NO.

C-DS1037-XXXXXXX

**Allconnectors**

www.allconnectors.eu | info@allconnectors.eu

Tel. +49 (0)711 / 358 110 20 | Fax +49 (0)711 / 358 110 25