

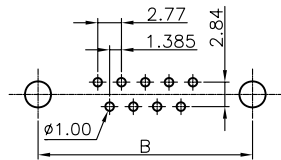
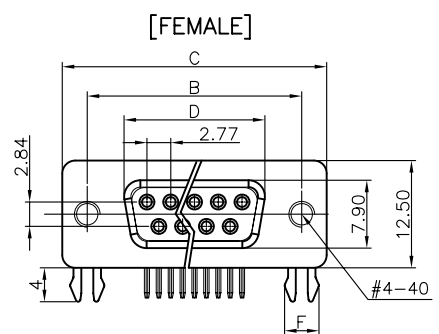
REV.	DESCRIPTION	DRAWN	CHECKED	APPROVED
A	NEW RELEASE	LJH 06/14/07'	~	LJC 06/14/07'
B	新增螺丝规格	YCH 11/05/11'	~	

NOTES: 备注

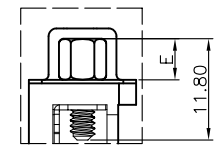
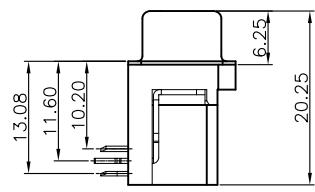
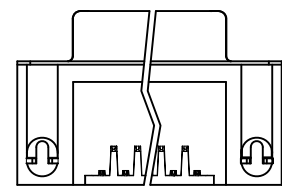
- PRODUCTS PERFORMANCE:
  - VOLTAGE RATING: 250V AC.
  - CONTACT CURRENT RATING: 1.5A MAX. PER PIN.
  - CONTACT RESISTANCE: 20mΩ MAX.
  - DIELECTRIC WITHSTANDING VOLTAGE: 500V AC(rms) FOR 1 MINUTE.
  - INSULATION RESISTANCE: 1000MΩ MIN.
  - OPERATING TEMPERATURE: -20°C~+70°C.

2. PRODUCT NUMBER CODE:  
DS1037 -01- X X X X X X X X

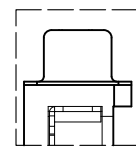
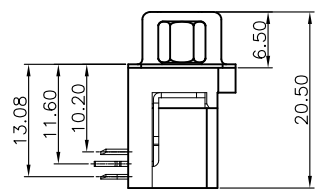
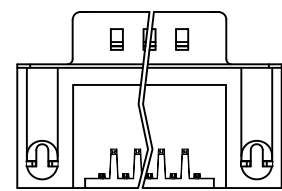
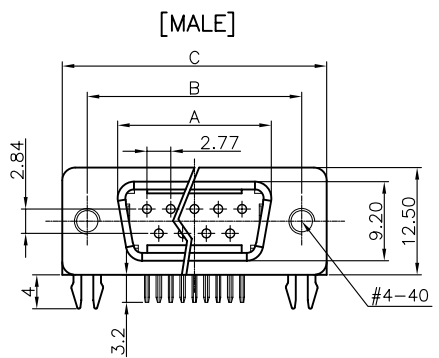
- SCREW DIM. E
  - 4: 4.80mm
  - 5: 5.80mm
  - Ⓟ6: 4.80mm(Inside thread M2.6\*0.45p, outside thread unc#4-40)
  - ⓅM3: 4.80mm(Inside thread M3.0, outside thread unc#4-40)
- BOARD LOCK DIM. F
  - 4: 4.00mm
  - 7: 3.70mm
- CONTACT PLATING
  - T: SELECTIVE GOLD FLASH
  - Si: FULL GOLD FLASH
  - 6: FULL TIN
- COLOR OF HOUSING
  - K: BLACK
  - B: BLUE
- SCREW TYPE
  - A: WITH SCREW TYPE
  - B: WITH RIVET TYPE
  - C: WITH SCREW AND RIVET TYPE
  - D: RIVET TYPE WITH SCREW IN BULD PACKAGE
- SHELL PLATING
  - N: Nickel
  - T: Tin
- CONNECTOR TYPE
  - M: MALE
  - F: FEMALE
- No. OF CONTACT
  - 09: 9pos.
  - 15: 15pos.
  - 25: 25pos.
  - 37: 37pos.



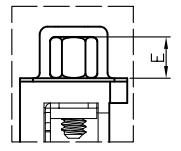
RECOMMEND PCB LAYOUT(TOLERANCE ±0.05)  
(VIEW FROM TOP SIDE)



WITH SCREW TYPE



WITH RIVET TYPE



WITH SCREW AND RIVET TYPE

Dimension				
Position	A±0.2	B±0.2	C±0.2	D
9	17.90	24.99	30.80	16.33
15	26.50	33.32	39.14	24.66
25	40.00	47.04	53.04	38.38
37	56.50	63.50	69.32	54.84

GENERAL TOLERANCE		ANGLE TOLERANCE	
X.	±0.50	X.	±3°
.X	±0.30	.X	±2°
.XX	±0.20	.XX	±1°
DRAWING TYPE		ASSEMBLY	
SCALE	1:1	SHEET	1 OF 1
DRAWING NO.	C-DS1037-01-XXXXXXX-B		

PROJECTION	TITLE
	D-SUB RIGHT ANGLE(9.4mm) TYPE
UNITS	mm
SHEET SIZE	A4
SERIES	DS1037-01 SERIES

**Allconnectors**

www.allconnectors.eu | info@allconnectors.eu  
Tel. +49 (0)711 / 358 110 20 | Fax +49 (0)711 / 358 110 25