

SPECIFICATIONS

ELECTRICAL CHARACTERISTICS:

Contact Current Rating: 5 Amperes.
Dielectric Withstanding Voltage: AC 1000/60sec.r.m.s.
Insulation Resistance: 5000 MEdohms Minimum
Contact Resistance: 25 Milliohms Maximum.
Operating Temperature: -55°C to +105°C.

MECHANICAL CHARACTERISTICS:

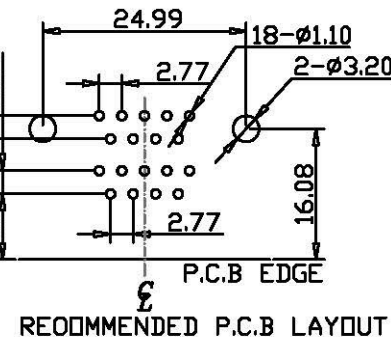
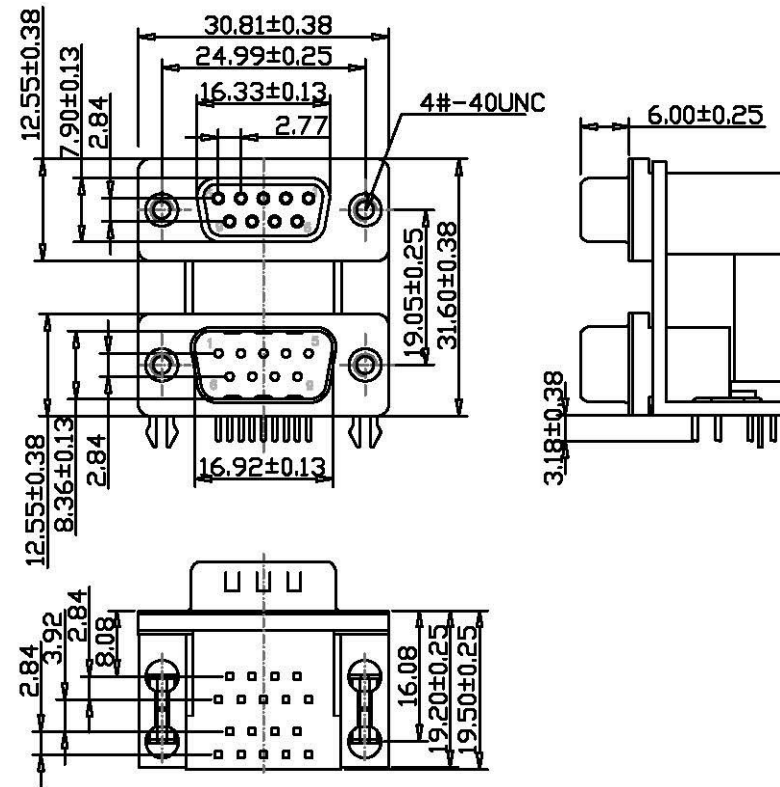
Contact Insertion Force: 341 g. Maximum.
Contact Separation Force: 21 g. Minimum.

MATERIALS:

Contacts: Brass.
Insulator: PBT UL 94V-0 Rated.
Shell: Cold Roller Steel.

FINISHES:

Contact: Gold Flash.
Shell: Nickel Plated.



All Connectors

www.allconnectors.de
Tel.: 0049 711 7009503
70794 Filkestadt - Germany

info@allconnectors.de
Fax: 0049 711 7009504
Kettnerstr. 25

RoHS Compliant

DRAWING BY CY

CHECKED BY GENIUS

UNIT / mm SCALE 1 : 1

DATE

SIZE A4

TOLERANCES ARE

X ±

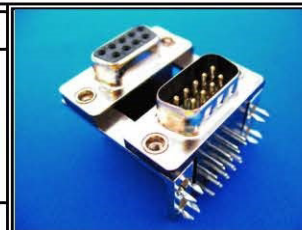
.X ±

.XX ±

.XXX ±

ANG ±

PPOJECTION



ORDER INFORMATION

DRB1-AN19-0909-LF

SERIES
LEADFREE
09 TO 09 WAY
SPACING 19.05mm
NUT
FEMALE TO MALE

DESCRIPTION: D-SUB CONNECTOR 9 FEMALE/9 MALE DUAL PORT