

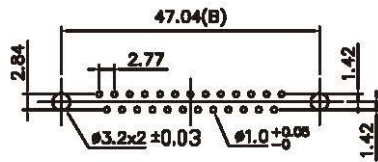
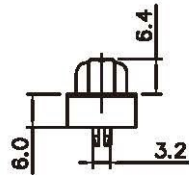
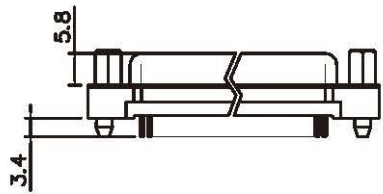
Product Specification

Material

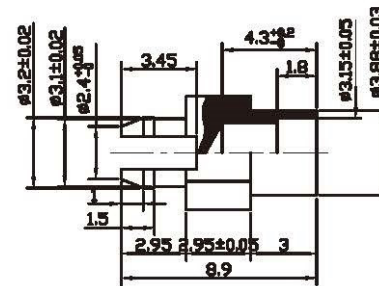
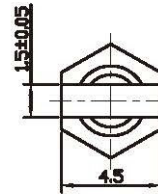
Insulator :Glass-Filled Thermoplastic PBT or PA9T,UL94V-0 rated
 Contact : Copper alloy
 Shell : Steel, 100u" Tin Over 50u" min Copper
 Boardlock :Brass, 100u" min Tin Plated.
 Screwlock :Steel, 80u" min Nickel Plated.

Electrical

Contact Resistance :20 milliohms
 Insulation Resistance :1000 megohms at 500 VDC
 Dielectric Withstanding Voltage : 1000 VAC/rms 60Hz for 1 minute
 Current Rating :3 AMP
 Voltage Rating :250 VAC/rms 60Hz



Recommended PCB Layout



SCALE: 4 : 1

Dimensions

Positions	A	B	D	E
9	30.81	24.99	16.33	11.08
15	39.20	33.30	24.70	19.39
25	53.05	47.04	38.40	33.24
37	69.40	63.50	54.80	49.86

RoHS Compliant

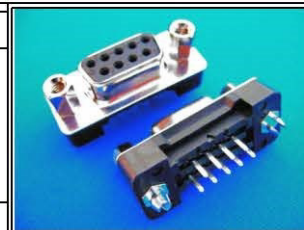


www.allconnectors.de info@allconnectors.de
 Tel.: 0049 711 7000503 Fax: 0049 711 7000504
 70794 Filderstadt - Germany Kellenmerstr. 25

DRAWING BY CY
 CHECKED BY GENIUS
 UNIT / mm SCALE 1 : 1
 DATE
 SIZE A4 PROJECTION

TOLERANCES ARE

X ± 0.38
 X ± 0.25
 .XX ± 0.13
 .XXX ±
 ANG ±



ORDER INFORMATION

DDM-SZNJ-xx-LF
 SERIES | | | LEADFREE
 | | | 09~37WAY
 | | | JACKSCRW
 | | | NUT
 | | | CLIP
 | | | FEMALE

DESCRIPTION: D-SUB STRAIGHT TYPE W/O METAL REAR SHELL