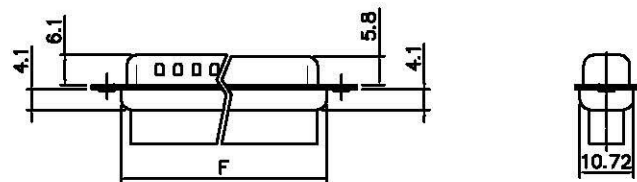
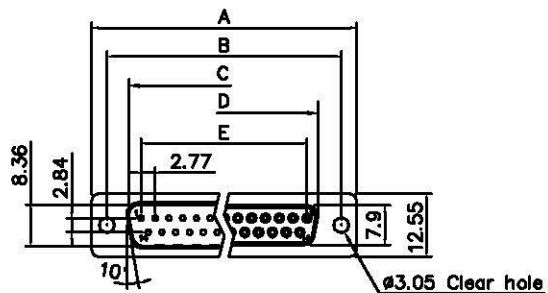


THE INFORMATION CONTAINED IN THIS DOCUMENT IS PROPRIETARY TO Y-S ELECTRONIC, ANY REPRODUCTION IN PART OR WHOLE WITHOUT PRIOR WRITTEN APPROVAL OR AUTHORIZATION OF Y-S ELECTRONIC IS STRICTLY PROHIBITED.

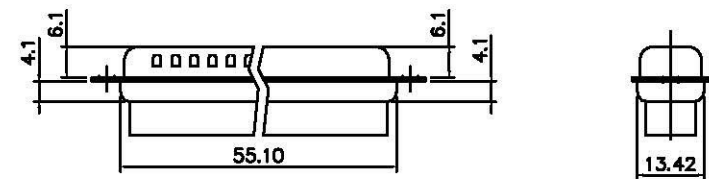
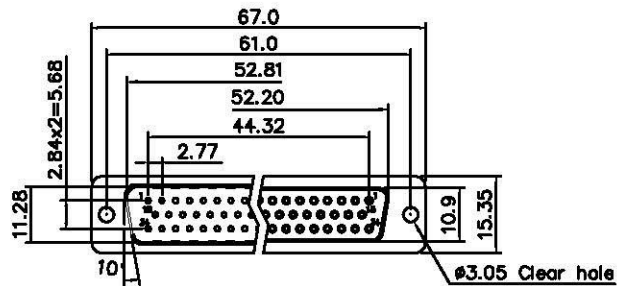
RoHS COMPLIANT

REVISIONS				
REV	ECN NO.	DESCRIPTION	APPROVED BY	DATE
A				



Dimensions

Positions	A	B	C	D	E	F
9	30.81	24.99	16.92	16.33	11.08	19.20
15	39.20	33.30	25.25	24.70	19.39	27.70
25	53.05	47.04	38.96	38.40	33.24	41.10
37	69.40	63.50	55.42	54.80	49.86	57.30



50 Positions

Product Specification

Material

Insulator : Glass-Filled Thermoplastic PBT, UL94V-0

Insulator Color : Black

Shell : Steel, 100u" Tin Over 50u" min Copper

Clinch Nut : Brass, Nickel Plated.

Screwlock : Brass, Nickel Plated.

Electrical

Insulation Resistance : 1000

megohms at 500 VDC

Dielectric Withstanding Voltage :

1000 VAC/rms 60Hz for 1 minute

DO NOT SCALE DRAWING

DIMENSIONS: <input type="checkbox"/> MM [INCH] <input type="checkbox"/> INCH [mm] <input checked="" type="checkbox"/> MM ONLY		CAD GENERATED DRAWING, DO NOT MANUALLY UPDATE DRAWN BY AND DATE JUSTIN XING 10-20-05	
UNLESS OTHERWISE SPECIFIED, GENERAL TOLERANCE: DECIMALS ANGLES .X ±0.38 [0.015] X° ±3° .X ±0.25 [0.010] .X° ±1.0° .XX ±0.13 [0.005]		CHECKED BY AND DATE JOHN HE 11-20-05 APPROVED BY AND DATE JASON ZHUANG 11-20-05 THIRD ANGLE PROJECTION	
MATERIAL:			
FINISH:		SCALE: 1 : 1	SIZE: A3

<small>www.allconnectors.de Tel: +49 (0) 712 3302813 70774 Filzschmitt • Germany</small>	<small>info@allconnectors.de Tel: +49 (0) 712 3302814 Kulmbach • 95</small>
TITLE 102 SERIES D-SUB CRIMP TYPE	
DRAWING NO. 102-XXXXXX	REV A
FILE NO.:	SHEET 1 OF 3

1 2 3 4 5 6 7 8

THE INFORMATION CONTAINED IN THIS DOCUMENT IS PROPRIETARY TO Y-S ELECTRONIC, ANY REPRODUCTION IN PART OR WHOLE WITHOUT PRIOR WRITTEN APPROVAL OR AUTHORIZATION OF Y-S ELECTRONIC IS STRICTLY PROHIBITED.

RoHS COMPLIANT

REVISIONS				
REV	ECN NO.	DESCRIPTION	APPROVED BY	DATE

Ordering Information

102 - $\frac{XX}{a} \frac{X}{b} \frac{X}{c} \frac{X}{d} \frac{X}{e}$

a. No. Of Pins

- 09: 09 positions
- 15: 15 positions
- 25: 25 positions
- 37: 37 positions
- 50: 50 positions

b. Contact Type:

- 1: Male
- 2: Female

c. Shell plating :

- 0. Cr⁺³ yellow chrome
- 1. Nickel(standard)
- 2. Tin
- 3. Cr⁺⁶ yellow chrome
- 4. Gold flash
- 5. Tin, not dimple
- 6. Cr⁺⁶ yellow chrome, dimple
- 7. Tin tab shell, dimple
- 8. Special tin, dimple
- 9. Cr⁺³ yellow chrome, dimple
- A. Tin tab shell, dimple; Copper alloy

d. Position of clinch nut


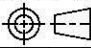
- 0. Clear hole $\phi 3.05\text{mm}$
- 1. Rivet front 5.9mm
- 2. Rear rivet, 5.9mm
- 3. Rivet boardlock

- A. Front rivet, 2.0mm
- B. Front rivet, 2.5mm
- C. Front rivet, 4.0mm
- D. Rear rivet, 2.0mm
- E. Rear rivet, 2.5mm
- F. Rear rivet, 4.0mm
- G. Rivet tab shell
- H. Rear rivet leister, 19.0mm

e. Flange Mounting Option

- 0. $\phi 3.05\text{mm}$ clear hole
- 1. #4-40 threaded hole
- 2. #4-40 threaded hole with #4-40 unc(5*10mm)screwlock installed
- 3. #4-40 threaded hole with #4-40 unc(5*10mm)screwlock bulk-packed
- 4. M3 threaded hole
- 5. #4-40 threaded hole with M3(5*10mm)screwlock installed
- 6. M2.6 threaded hole
- 7. #4-40 threaded hole with M2.6(5*10mm)screwlock installed
- 8. #4-40 threaded hole with #4-40 unc(5.8*10.8mm)screwlock installed
- 9. #4-40 threaded hole with M3(5.8*10.8mm)screwlock installed
- B. Straight rivet $\phi 4.0\text{mm}$

DO NOT SCALE DRAWING

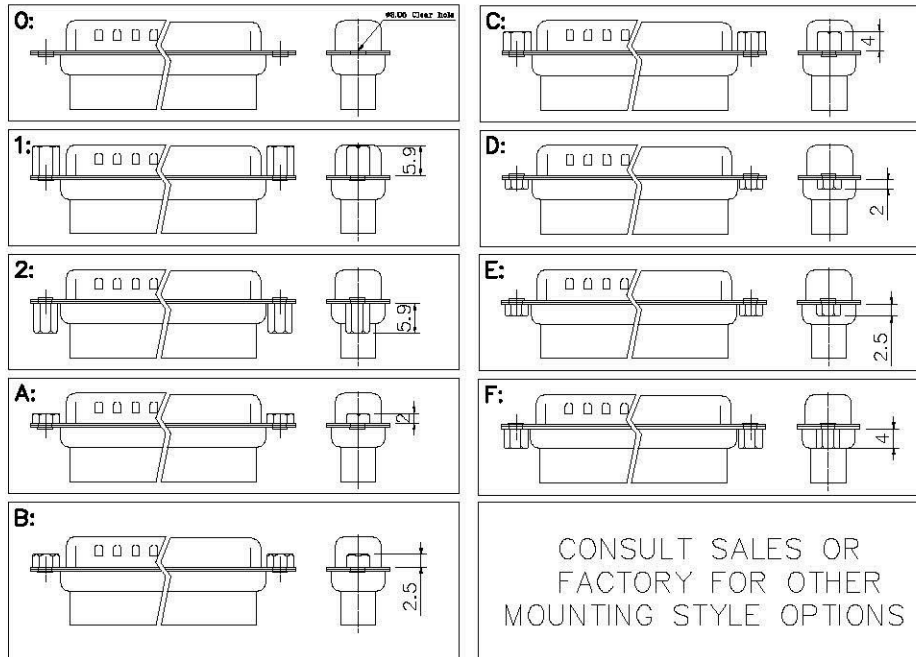
DIMENSIONS: <input type="checkbox"/> MM [INCH] <input type="checkbox"/> INCH [mm] <input checked="" type="checkbox"/> MM ONLY		CAD GENERATED DRAWING, DO NOT MANUALLY UPDATE DRAWN BY AND DATE JUSTIN XING 07-20-06			
UNLESS OTHERWISE SPECIFIED, GENERAL TOLERANCE: DECIMALS ANGLES .X ±0.38 [0.015] X° ±3° .X ±0.25 [0.010] .X° ±1.0° .XX ±0.13 [0.005]		CHECKED BY AND DATE JUSTIN XING 07-20-06 APPROVED BY AND DATE KING CHIU 07-20-06 THIRD ANGLE PROJECTION		TITLE 102 SERIES D-SUB CRIMP TYPE	
MATERIAL FINISH		 SCALE: 1:1 SIZE: A3		DRAWING NO. 102-XXXXXX REV B FILE NO. SHEET 2 OF 3	

THE INFORMATION CONTAINED IN THIS DOCUMENT IS PROPRIETARY TO Y-S ELECTRONIC, ANY REPRODUCTION IN PART OR WHOLE WITHOUT PRIOR WRITTEN APPROVAL OR AUTHORIZATION OF Y-S ELECTRONIC IS STRICTLY PROHIBITED.

RoHS COMPLIANT

REVISIONS				
REV	ECN NO.	DESCRIPTION	APPROVED BY	DATE
A				

d: Position of Clinch Nut



DO NOT SCALE DRAWING

DIMENSIONS: <input type="checkbox"/> MM [INCH] <input type="checkbox"/> INCH [mm] <input checked="" type="checkbox"/> MM ONLY		CAD GENERATED DRAWING, DO NOT MANUALLY UPDATE DRAWN BY AND DATE JUSTIN XING 10-20-05			
UNLESS OTHERWISE SPECIFIED, GENERAL TOLERANCE: DECIMALS ANGLES .X ±0.38 [0.015] X° ±3° .X ±0.25 [0.010] .X° ±1.0° .XX ±0.13 [0.005]		CHECKED BY AND DATE JUSTIN XING 10-20-05 APPROVED BY AND DATE KING CHIU 10-20-05 THIRD ANGLE PROJECTION		TITLE 102 SERIES D-SUB CRIMP TYPE	
MATERIAL: _____ FINISH: _____				DRAWING NO. 102-XXXXXX REV A	
SCALE: 1 : 1 SIZE: A3		FILE NO.: _____		SHEET 3 OF 3	

www.allconnectors.de
Tel.: 0049 711 709509
70794 Filderstadt - Germany

info@allconnectors.de
Fax: 0049 711 709504
Kottbusstr. 12