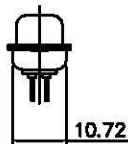
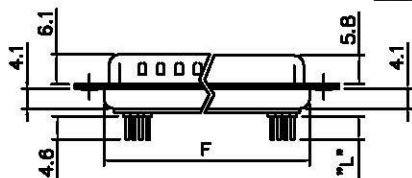
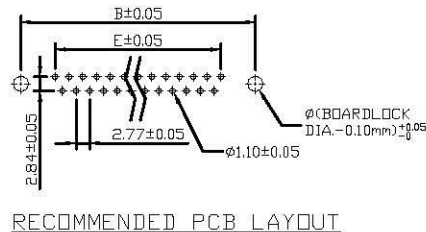
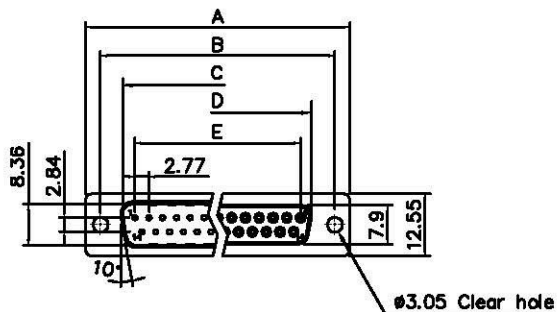


THE INFORMATION CONTAINED IN THIS DOCUMENT IS PROPRIETARY TO Y-S ELECTRONIC, ANY REPRODUCTION IN PART OR WHOLE WITHOUT PRIOR WRITTEN APPROVAL OR AUTHORIZATION OF Y-S ELECTRONIC IS STRICTLY PROHIBITED.

RoHS COMPLIANT

REVISIONS				
REV	ECN NO.	DESCRIPTION	APPROVED BY	DATE



DIMENSION TABLE

POSITIONS	A±0.15	B±0.10	C±0.15	D±0.13	E±0.08	F±0.10
9	30.81	24.99	16.92	16.33	11.08	19.20
15	39.20	33.30	25.25	24.70	19.39	27.70
25	53.05	47.04	38.96	38.40	33.24	41.10
37	69.40	63.50	55.42	54.80	49.86	57.30

Specification

Material

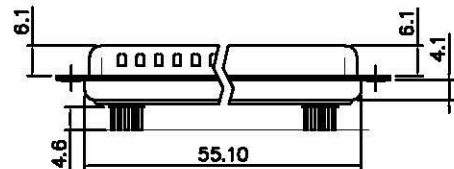
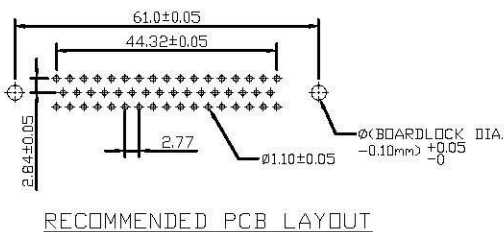
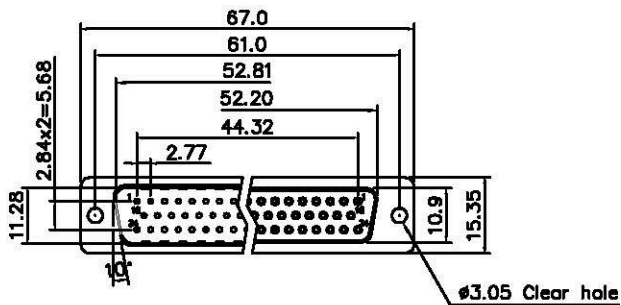
Insulator : Glass-Filled Thermoplastic PBT, UL94V-0
 Contact : Brass
 Shell : Steel, 100u" Tin Over 50u" min Copper
 Clinch Nut : Brass, Nickel Plated
 Boardlock : Brass, Tin Plated
 Screwlock : Brass, Nickel Plated

Electrical

Contact Resistance : 20 milliohms
 Insulation Resistance : 1000 megohms min.
 at 500 VDC
 Dielectric Withstanding Voltage :
 1000 VAC/rms 60Hz for 1 minute
 Current Rating : 3 AMP
 Voltage Rating : 250 VAC/rms 60Hz

Environmental

Temperature Range: -55°C ~ +85°C



50 POSITIONS

DO NOT SCALE DRAWING

DIMENSIONS: <input type="checkbox"/> MM [INCH] <input type="checkbox"/> INCH [mm] <input checked="" type="checkbox"/> MM ONLY		CAD GENERATED DRAWING, DO NOT MANUALLY UPDATE	
UNLESS OTHERWISE SPECIFIED, GENERAL TOLERANCE: DECIMALS ANGLES .X ±0.38 [0.015] X° ±3° .XX ±0.25 [0.010] .X° ±1.0° .XX ±0.13 [0.005]		CHECKED BY AND DATE JUSTIN XING 11-21-05	
MATERIAL		APPROVED BY AND DATE KING CHIU 11-21-05	
FINISH		THIRD ANGLE PROJECTION	
SCALE: 1 : 1		SIZE: A3	

DRAWN BY AND DATE JUSTIN XING 11-21-05	
TITLE	
101 SERIES D-SUB DIP STRAIGHT TYPE	
DRAWING NO. 101-XXXXXXXXXX	REV A
FILE NO.	SHEET 1 OF 3

All Connectors
 www.allconnectors.de info@allconnectors.de
 70794 Filzschicht · Germany 8482091/13 · 8482091
 Kottbusstr. 22

THE INFORMATION CONTAINED IN THIS DOCUMENT IS PROPRIETARY TO Y-S ELECTRONIC, ANY REPRODUCTION IN PART OR WHOLE WITHOUT PRIOR WRITTEN APPROVAL OR AUTHORIZATION OF Y-S ELECTRONIC IS STRICTLY PROHIBITED.

RoHS COMPLIANT

Ordering Information

101 - $\frac{XX}{a} \frac{X}{b} \frac{X}{c} \frac{X}{d} \frac{X}{e} \frac{X}{f} \frac{X}{g} \frac{X}{h} \frac{X}{T}$

REVISIONS				
REV	ECN NO.	DESCRIPTION	APPROVED BY	DATE

- a. No. Of Pins**
 09: 09 positions
 15: 15 positions
 25: 25 positions
 37: 37 positions
 50: 50 positions

- b. Contact Type:**
 1: Male
 2: Female

- c. Contact Plating :**
 0. Gold flash selective gold(standard)
 1. 5u"selective gold on contact
 2. 10u"selective gold on contact
 3. 15u"selective gold on contact
 4. 30u"selective gold on contact
 5. 50u"selective gold on contact
 6. Gold flash full gold
 7. 8u" gold flash full gold
 8. Full tin
 9. matte tin selective gold
 A. 30u"matte tin selective gold
 B. 15u"matte tin selective gold

- d. Shell plating :**
 0. Cr⁺³yellow chrome A. Matte tin
 1. Nickel(standard) B. Tab shell matte tin ϕ 4.0
 2. Tin C. Tin(With Y-S Logo)
 3. Cr⁺⁶yellow chrome
 4. Gold flash
 5. Tab shell dimple
 6. Tab shell ϕ 4.0
 7. Cr⁺⁶yellow chrome, dimple
 8. Thickness Assigned of tin, dimple
 9. Cr⁺³yellow chrome, dimple

- e. Insulator Color :**
 1: Blue A: Black(high temperature)
 2: Black(standard) B: Blue(high temperature)
 3: White C: White(high temperature)
 4: Gray
 5: Pc99 blue
 6: Tab insulator, black
 7: Green
 8: Pc99 green
 9: Pc99 yellow
 0: Pc99 purple

- f. Position of Clinch Nut :**
0: Clear hole ϕ 3.05mm
 1: Rivet front 5.9mm
 2: Rear rivet, 5.9mm
 3: Rivet+2 prong boardlock6.0*3.2mm
 4: Rivet front, Round 5.9mm
 5: Rivet+4 prong boardlock6.0*3.2mm
 6: Boardlock 4.75*11.7mm, track hole section1.0mm
 7: Rivet+2 prong boardlock5.2*3.2mm
 A: Front rivet, 2.0mm
 B: Front rivet, 2.5mm
 C: Front rivet, 4.0mm
 D: Rear rivet, 2.0mm
 E: Rear rivet, 2.5mm
 F: Rear rivet, 4.0mm
 G: Rivet+2 prong boardlock(6.0*3.0mm)
 H: Rivet+2 prong boardlock(6.0*3.3mm)
 I: Rivet+2 prong boardlock(7.3*3.2mm)
 J: Rear rivet, 3.5mm
 K: Rear rivet, 5.0mm
 L: Front rivet, 5.0mm
 M: Rivet+2 prong boardlock(5.0*3.2mm)
 N: Rear rivet, 11.7mm
 O: Boardlock 5.5mm
 P: Rivet+2 prong boardlock(6.0*3.0mm)
 Q: Rivet+2 prong round boardlock(6.0*3.0mm)
 R: Boardlock7.1*3.2
 S: Round Boardlock27.5mm
 T: Rear Rivet6.2mm
 U: Boardlock 9.6* 3.2mm
 V: Boardlock 13.5*3.2mm, track hole section1.0mm
 W: Boardlock 11.9*3.2mm, track hole section1.0mm
 X: Boardlock 12.5*3.2mm, track hole section1.0mm


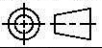
- g. Flange Mounting Option :**
0: ϕ 3.05mm clear hole
 1: #4-40 threaded hole
 2: #4-40 threaded hole with #4-40 unc(5*10mm)screwlock installed
 3: #4-40 threaded hole with #4-40 unc(5*10mm)screwlock bulk-packed
 4: M3 threaded hole
 5: #4-40 threaded hole with M3(5*10mm)screwlock installed
 6: M2.6 threaded hole
 7: #4-40 threaded hole with M2.6(5*10mm)screwlock installed
 8: #4-40 threaded(half hole)
 A: Bolt type screw lock
 B: #4-40 threaded hole with #4-40 unc(5.8*10.8mm)screwlock installed
 C: #4-40 threaded hole Standoff+2 prong boardlock screw:6.0*3.2mm screwlock installed
 D: #4-40 threaded hole with M3(5.8*10.8mm)screwlock installed
 E: #4-40 threaded hole with #4-40 unc(5.8*10.8mm)screwlock bulk-packed
 F: #4-40 threaded hole with #4-40 unc(4.8*11.8mm)screwlock bulk-packed
 G: #4-40 threaded hole with M2.6(5.8*10.8mm)screwlock installed
 H: #4-40 threaded hole with round "-" font #4-40 unc(6.0*12.0mm)screwlock installed
 I: #4-40 threaded hole with #4-40 unc(4.8*10.0mm)screwlock installed
 J: #4-40 threaded hole with #4-40 unc(5.0*11.0mm)screwlock installed

- h. Pin Type :**
 0. Stamped pin: 5.5mm
 1. Stamped pin: 4.8mm
 2. Machined pin: 5.0mm
 3. Stamped contact: 4.8mm wanting 1pin
 4. Stamped short pin: 3.2mm
 5. Machined pin: 5.5mm
 6. Machined pin: 6.2mm
 7. Machined pin: 17.5mm
 8. Stamped pin: 4.3mm
 9. Machined pin: 13mm
 A. Machined pin: 7.4mm
 B. Machined pin: 9.52mm
 C. Machined pin: 12.6mm
 D. Stamped pin: 5.0mm
 E. Machined pin: 6.5mm

- i. Ferrite :**
 0. Without ferrite
 1. With ferrite

- Lettering :**
 Y: laser lettering
 K: kang tai lettering

DO NOT SCALE DRAWING

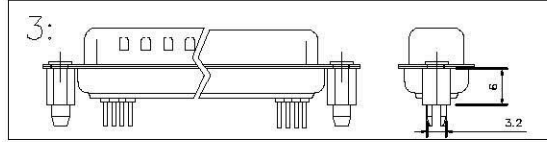
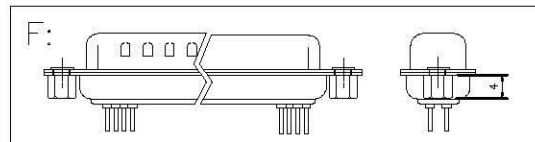
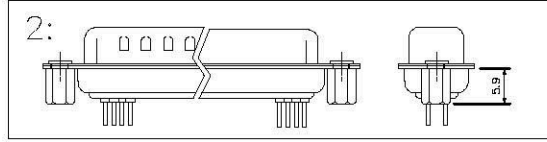
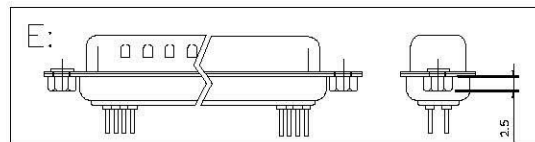
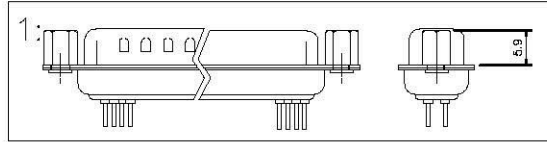
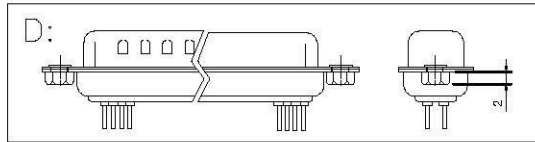
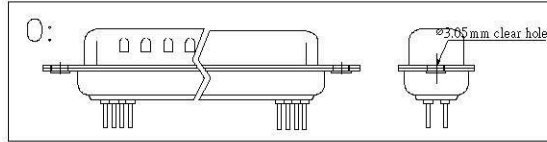
DIMENSIONS: <input type="checkbox"/> MM [INCH] <input type="checkbox"/> INCH [mm] <input checked="" type="checkbox"/> MM ONLY		CAD GENERATED DRAWING, DO NOT MANUALLY UPDATE DRAWN BY AND DATE JUSTIN XING 07-20-06			
UNLESS OTHERWISE SPECIFIED, GENERAL TOLERANCE: DECIMALS ANGLES X: ± 0.38 [0.015] X°: $\pm 3^\circ$.X: ± 0.25 [0.010] .X°: $\pm 1.0^\circ$.XX: ± 0.13 [0.005]		CHECKED BY AND DATE JUSTIN XING 07-20-06 APPROVED BY AND DATE KING CHIU 11-21-05 THIRD ANGLE PROJECTION 		TITLE 101 SERIES D-SUB DIP STRAIGHT TYPE	
MATERIAL FINISH		SCALE: 1:1 SIZE: A3		DRAWING NO. 101-XXXXXXXXXX REV D	
FILE NO.				SHEET 2 OF 3	

THE INFORMATION CONTAINED IN THIS DOCUMENT IS PROPRIETARY TO Y-S ELECTRONIC, ANY REPRODUCTION IN PART OR WHOLE WITHOUT PRIOR WRITTEN APPROVAL OR AUTHORIZATION OF Y-S ELECTRONIC IS STRICTLY PROHIBITED.

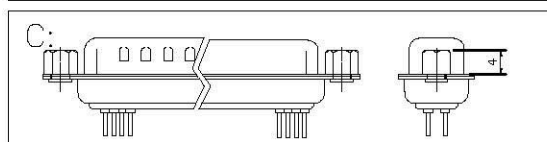
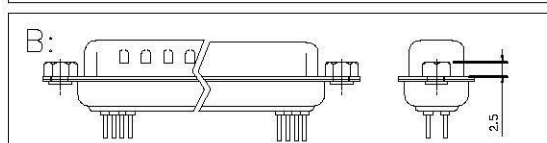
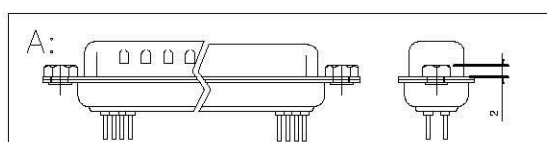
RoHS COMPLIANT

REVISIONS				
REV	ECN NO.	DESCRIPTION	APPROVED BY	DATE

f: Position of Clinch Nut



CONSULT SALES OR FACTORY FOR OTHER MOUNTING STYLE OPTIONS



DO NOT SCALE DRAWING

DIMENSIONS: <input type="checkbox"/> MM [INCH] <input type="checkbox"/> INCH [mm] <input checked="" type="checkbox"/> MM ONLY	CAD GENERATED DRAWING, DO NOT MANUALLY UPDATE DRAWN BY AND DATE JUSTIN XING 07-20-06	All Connectors <small>www.allconnectors.de info@allconnectors.de Tel: 0049 711 7005523 Fax: 0049 711 7005524 RZ/11 Alsterlund - Germany kettenmetall.de</small>	
		TITLE 101 SERIES D-SUB DIP STRAIGHT TYPE	
UNLESS OTHERWISE SPECIFIED, GENERAL TOLERANCE: DECIMALS ANGLES .X ±0.38 [0.015] X° ±3° .X ±0.25 [0.010] .X° ±1.0° .XX ±0.13 [0.005]	CHECKED BY AND DATE JUSTIN XING 07-20-06 APPROVED BY AND DATE KING CHIU 11-21-05 THIRD ANGLE PROJECTION	DRAWING NO. 101-XXXXXXXXXX	
MATERIAL FINISH	SCALE: 1 : 1 SIZE: A3	FILE NO.:	REV A SHEET 3 OF 3