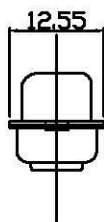
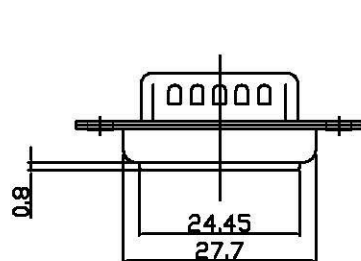
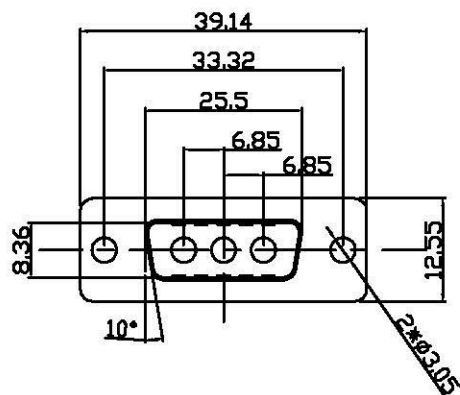


THE INFORMATION CONTAINED IN THIS DOCUMENT IS PROPRIETARY TO Y-S ELECTRONIC, ANY REPRODUCTION IN PART OR WHOLE WITHOUT PRIOR WRITTEN APPROVAL OR AUTHORIZATION OF Y-S ELECTRONIC IS STRICTLY PROHIBITED.

RoHS COMPLIANT

REVISIONS				
REV	ECN NO.	DESCRIPTION	APPROVED BY	DATE
A				07/01/25



Specifications:

Electrical Characteristics:

Dielectric Withstanding Voltage: AC 1000V r. m. s
 Insulation Resistance: 5000 Megohms Min.
 Contact Resistance: 30 Milliohms Max.
 Operating Temperature: -55°C ~ +125°C

Mechanical Characteristics:

Contact Insertion Force: 4.5kg Max
 Contact Separation Force: 0.3kg Mini.

Materials:

Insulator: PBT UL94V-0 Rated

Shell: Steel

Finishes:

Shell: Tin Plated

DO NOT SCALE DRAWING

DIMENSIONS: <input type="checkbox"/> MM [INCH] <input type="checkbox"/> INCH [mm] <input checked="" type="checkbox"/> MM ONLY		CAD GENERATED DRAWING, DO NOT MANUALLY UPDATE DRAWN BY AND DATE JUSTIN XING 12-26-02			
UNLESS OTHERWISE SPECIFIED, GENERAL TOLERANCE: DECIMALS .X ±0.38 [0.015] .XX ±0.25 [0.010] .XXX ±0.13 [0.005]		CHECKED BY AND DATE JUSTIN XING 12-26-02 APPROVED BY AND DATE KING CHIU 12-26-02 THIRD ANGLE PROJECTION		TITLE D-SUB P.C.B STRAIGHT TYPE 3W3P(SIGNAL/POWER)MALE	
MATERIAL				DRAWING NO. 161-B100142100	
FINISH		SCALE: FREE SIZE: A3		REV A	
FILE NO.:				SHEET 1 OF 1	

THE INFORMATION CONTAINED IN THIS DOCUMENT IS PROPRIETARY TO Y-S ELECTRONIC, ANY REPRODUCTION IN PART OR WHOLE WITHOUT PRIOR WRITTEN APPROVAL OR AUTHORIZATION OF Y-S ELECTRONIC IS STRICTLY PROHIBITED.

RoHS COMPLIANT

REVISIONS

REV	ECN NO.	DESCRIPTION	APPROVED BY	DATE

Ordering Information

161 - $\frac{X}{a} \frac{X}{b} \frac{X}{c} \frac{X}{d} \frac{X}{e} \frac{X}{f} \frac{X}{g} \frac{X}{h} \frac{X}{i} \frac{X}{j}$

a. No. Of Pins

A: 2W2 F: 8W8 K: 17W2 P:27W2
 B: 3W3 G: 11W1 L: 1W1 Q:9W4
 C: 5W1 H: 13W3 M: 21W1 R:11W1
 D: 5W5 I: 21W4 N: 24W7
 E: 7W2 J: 36W4 O: 25W3

b. Contact Type

1: MALE 8: POWER FEMALE(1 MALE 1 FEMALE)
 2: FEMALE
 3: 3W3(2 MALE 1 FEMALE)
 4: 3W3(1 MALE 2 FEMALE)
 5: MALE + TAB SHELL
 6: FEMALE + TAB SHELL
 7: 2W2(1 MALE 1 FEMALE)

c. Contact Type(Signal Pin)

0: NONE
 1: SOLDER TYPE,Stamped Pin
 2: DIP STRAIGHT TYPE,Stamped Pin
 3: CRIMP TYPE,Machined Pin
 4: Dip Straight,Machined Pin

d. Contact TYPE(Power/Coaxial Pin)

0: NONE 5: 10A POWER
 1: 75 Ω COAXIAL 6: CRIMP TYPE
 2: 40A POWER
 3: 50 Ω COAXIAL
 4: 20A POWER

e. Contact Plating(Power/Coaxial Pin)

1: 3u' GOLD
 2: 15u' GOLD
 3: 30u' GOLD
 4: W/D Power/Coaxial Pin
 5: GOLD FLASH FULL GOLD

f. Contact Plating(Signal Pin)

0: GOLD FLASH FULL GOLD
 1: 3u' GOLD
 2: 15u' GOLD
 3: 30u' GOLD
 4: None

g. Shell Plating

0:Cr+3yellow chrome 3:Cr+6yellow chrome
 1.Nickel 4.Gold flash
 2.Tin(standard) 5.Special tin

h. Insulator Color

1: Black(standard)
 2: Green


i. Options Of Clinch Nut:

0: Clear hole∅3.05mm A:Front rivet,2.0mm
 1: Front riveted,5.9mm B:Front rivet,2.5mm
 2: Rear riveted,5.9mm C:Front rivet,4.0mm
 3: Riveted boardlock:6.0*3.2mm D:Rear rivet,2.0mm
 4: Rear riveted round nuts:5.9mm E:Rear rivet,2.5mm
 F:Rear rivet,4.0mm
 G:Riveted boardlock:6.5*3.2mm
 H:Riveted boardlock:7.1*3.2mm

j. Flange Mounting Option

0: ∅3.05mm clear hole
 1: #4-40 threaded hole
 2: #4-40UNC hole with #4-40UNC screwlock(5.0*10.0mm) installed
 3: #4-40UNC hole with #4-40UNC screwlock(5.0*10.0mm) bulk-packed
 4: M3 threaded hole
 5: #4-40UNC threaded hole with M3 screwlock(5.0*10.0mm) installed
 6: M2.6 threaded hole
 7: #4-40UNC threaded hole with M2.6 screwlock(5.0*10.0mm) installed
 8: #4-40UNC threaded hole with M3 screwlock(5.8*10.8mm) installed

DO NOT SCALE DRAWING

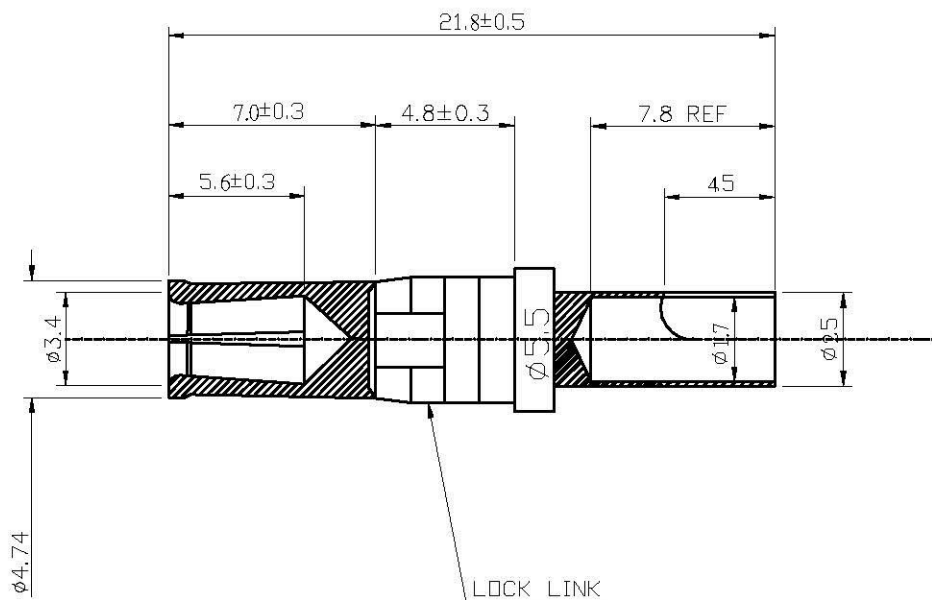
DIMENSIONS: <input type="checkbox"/> MM [INCH] <input type="checkbox"/> INCH [mm] <input checked="" type="checkbox"/> MM ONLY	CAD GENERATED DRAWING, DO NOT MANUALLY UPDATE DRAWN BY AND DATE JUSTIN XING 07-03-06		
		www.allconnectors.de info@allconnectors.de 2008-2013 AllConnectors GmbH	
UNLESS OTHERWISE SPECIFIED, GENERAL TOLERANCE: DECIMALS X: ±0.38 [0.015] X*: ±3° .X ±0.25 [0.010] .X* ±1.0° .XX ±0.13 [0.005]	CHECKED BY AND DATE JUSTIN XING 07-03-06 APPROVED BY AND DATE KING CHIU 07-03-06 THIRD ANGLE PROJECTION	TITLE 161 SERIES D-SUB COMBOL STRAIGHT TYPE	
MATERIAL FINISH	SCALE: 1 : 1 SIZE: A3	DRAWING NO. FILE NO.	REV C SHEET 1 OF 1

THE INFORMATION CONTAINED IN THIS DOCUMENT IS PROPRIETARY TO Y-S ELECTRONIC, ANY REPRODUCTION IN PART OR WHOLE WITHOUT PRIOR WRITTEN APPROVAL OR AUTHORIZATION OF Y-S ELECTRONIC IS STRICTLY PROHIBITED.

RoHS COMPLIANT

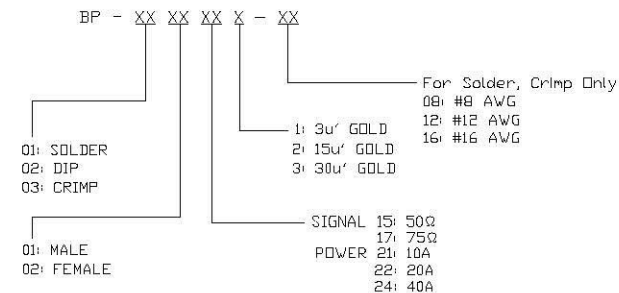
REVISIONS				
REV	ECN NO.	DESCRIPTION	APPROVED BY	DATE

Material:
 Contact : Brass with gold plated.
 Lock link : Brass with nickel plated.



FEMALE CONTACT SOLDER TYPE FOR POWER 10A GOLD 3U" PLATING

Terminal Ordering Information



DO NOT SCALE DRAWING

DIMENSIONS: <input type="checkbox"/> MM [INCH] <input type="checkbox"/> INCH [mm] <input checked="" type="checkbox"/> MM ONLY		CAD GENERATED DRAWING, DO NOT MANUALLY UPDATE		All Connectors www.allconnectors.de info@allconnectors.de Tel: 0910 711 700603 Fax: 0910 711 700594 70744 Hildersstadt, Germany Kettelerstr. 25	
UNLESS OTHERWISE SPECIFIED, GENERAL TOLERANCE: DECIMALS ANGLES .X ±0.38 [0.015] X° ±3° .X ±0.25 [0.010] .X° ±1.0° .XX ±0.13 [0.005]		CHECKED BY AND DATE JUSTIN XING 1-18-08		TITLE 161 SERIES D-SUB COAXIAL PIN (P.C.B POWER)	
MATERIAL		APPROVED BY AND DATE MICHAEL HUANG 1-18-08		DRAWING NO. BP0102211	
FINISH		THIRD ANGLE PROJECTION 		REV A	
SCALE: 8 : 1		SIZE: A3		FILE NO.: SHEET 1 OF 1	