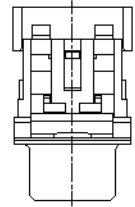
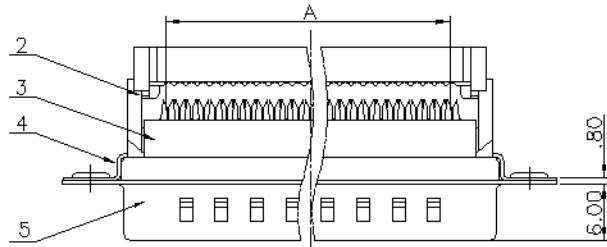
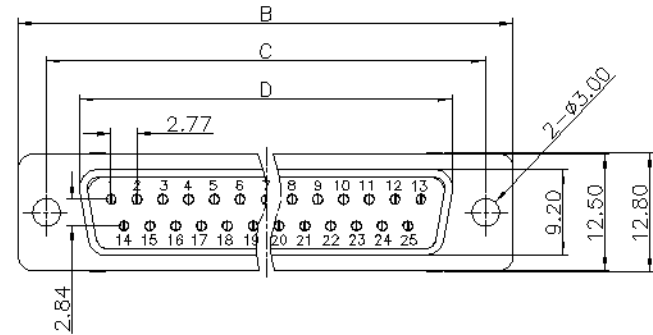


REV.	DESCRIPTION	DRAWN	CHECKED	APPROVED
A	NEW RELEASE	YCH 03/24/07'	~	LJC 03/24/07'
B	整印图面	YCH 08/14/07'	~	



- NOTES:
- ELECTRICAL CHARACTERISTICS:
 - CONTACT RESISTANCE: 30mΩ Max.INITIAL.
 - DIELECTRIC WITHSTANDING VOLTAGE:500V AC(rms) FOR 1 MINUTE.
 - INSULATION RESISTANCE:1000MΩ Min.
 - MECHANICAL CHARACTERISTICS:
 - DURABILITY: 300 CYCLES.
 - ENVIRONMENT CHARACTERISTICS:
 - OPERATING TEMPERATURE: 0°C~+85°C.
 - STORAGE TEMPERATURE: -20°C~+70°C.
 - PRODUCT NUMBER CODE:
DS1036-02 -XX X X X X

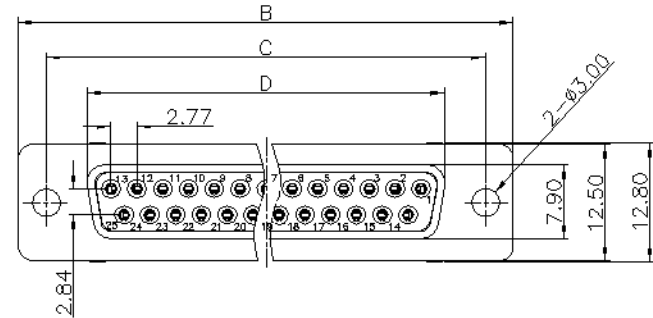
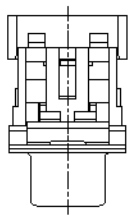
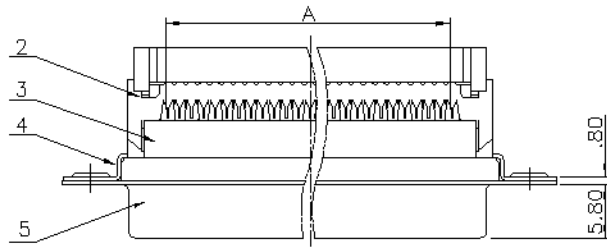


Position	A±0.1	B±0.2	C±0.2	D±0.2	
				Male	Female
9P	10.16	30.80	24.99	17.90	16.33
15P	17.78	39.14	33.32	26.50	24.66
25P	30.48	53.04	47.04	40.00	38.38
37P	45.72	69.32	63.50	56.50	54.84

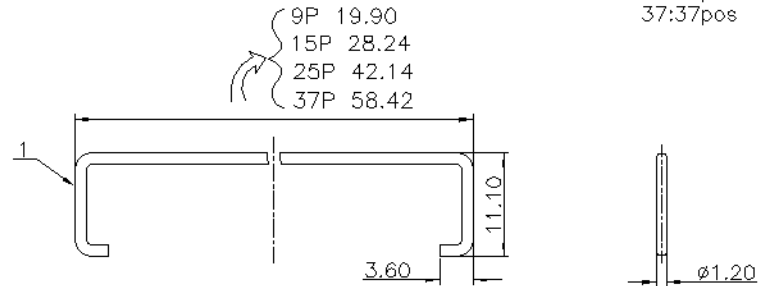
ITEM	PART NAME	MATERIAL	FINISHED
1	LATCH	STAINLESS STEEL	
2	MIDDLE COVER	PBT 30%G.F	UL 94 V-0
3	HOUSING	PBT 30%G.F	UL 94 V-0
4	WASHER	STEEL	Tin Plated
5	SHELL	STEEL	Nickel Plated

- CONTACT PLATING:
SI: SELECTIVE GOLD FLASH
- HOUSING COLOR:
U:BLUE
B:BLACK
- LATCH SUPPORT:
P:W/
- CONNECTOR TYPE:
M:MALE
F:FEMALE
- No.OF CONTACTS:
09:9pos
15:15pos
25:25pos
37:37pos

MALE



FEMALE



LATCH

GENERAL TOLERANCE		ANGLE TOLERANCE		PROJECTION	TITLE	
X.	±0.60	X.	±5°		D-SUB IDC WITH LATCH TYPE	
.X	±0.38	.X	±3°	mm		
.XX	±0.25	.XX	±2°	A4		
DRAWING TYPE				CUSTOMRE	SHEET	DS1036-02 SERIES
SCALE		1:1	SHEET	1 OF 1		
DRAWING NO.		C-DS1036-02-XXXXXX				

All Connectors
www.allconnectors.eu | info@allconnectors.eu
 Tel. +49 (0)711 / 358 110 20 | Fax +49 (0)711 / 358 110 25