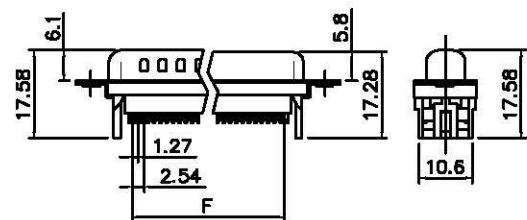
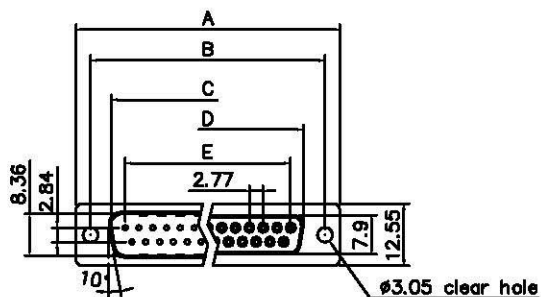


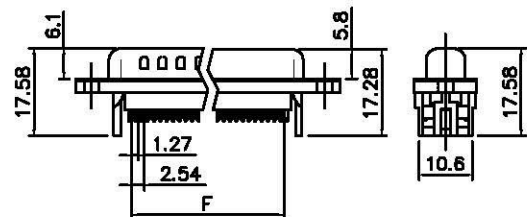
THE INFORMATION CONTAINED IN THIS DOCUMENT IS PROPRIETARY TO Y-S ELECTRONIC, ANY REPRODUCTION IN PART OR WHOLE WITHOUT PRIOR WRITTEN APPROVAL OR AUTHORIZATION OF Y-S ELECTRONIC IS STRICTLY PROHIBITED.

RoHS COMPLIANT

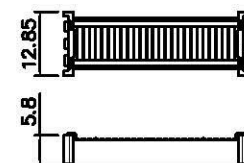
REVISIONS				
REV	ECN NO.	DESCRIPTION	APPROVED BY	DATE
A				



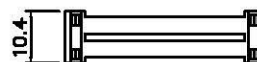
Without Insulator Support



With Insulator Support



Cover



Strain Relief

Product Specification

Material

Insulator : Glass-Filled Thermoplastic PBT, UL94V-0  
 Contact : Brass  
 Shell : Steel, 100u" Tin Over 50u" min Copper  
 Clinch Nut : Brass, Nickel Plated  
 Screwlock : Brass, Nickel Plated

Electrical

Contact Resistance : 20 milliohms  
 Max at 1 AMP DC  
 Insulation Resistance : 1000  
 megohms at 500 VDC  
 Dielectric Withstanding Voltage :  
 1000 VAC/rms 60Hz for 1 minute  
 Current Rating : 3 AMP  
 Voltage Rating : 250 VAC/rms 60Hz

Dimensions

Positions	A	B	C	D	E	F
9	30.81	24.99	16.92	16.33	11.08	10.16
15	39.20	33.30	25.25	24.66	19.39	17.78
25	53.05	47.04	38.96	38.38	33.24	30.48
37	69.40	63.50	55.42	54.84	49.86	45.72

DO NOT SCALE DRAWING

DIMENSIONS:  
 MM [INCH]  INCH [mm]  MM ONLY

UNLESS OTHERWISE SPECIFIED,  
 GENERAL TOLERANCE:  
 DECIMALS ANGLES  
 .X ±0.38 [0.015] X° ±3°  
 .XX ±0.25 [0.010] .X° ±1.0°  
 .XX ±0.13 [0.005]

MATERIAL  
 FINISH

CAD GENERATED DRAWING,  
 DO NOT MANUALLY UPDATE  
 DRAWN BY AND DATE  
 SUE ZHANG 10-20-05

CHECKED BY AND DATE  
 JUSTIN XING 10-20-05  
 APPROVED BY AND DATE  
 KING CHIU 10-20-05  
 THIRD ANGLE PROJECTION

SCALE: 1:1  
 SIZE: A3

**All Connectors**  
 www.allconnectors.de info@allconnectors.de  
 Tel: +49 (0) 71 488 900 Fax: +49 (0) 71 488 900  
 71794 Filberstadt Germany Kottowstraße 31

TITLE  
 103 SERIES  
 D-SUB IDC TYPE

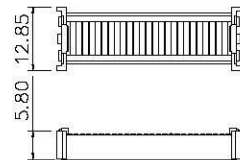
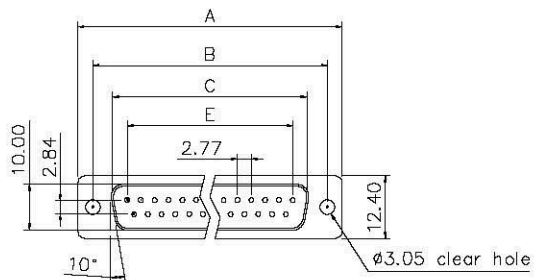
DRAWING NO. 103-XXXXXXXXX  
 FILE NO. SHEET 1 OF 5

REV  
 A

THE INFORMATION CONTAINED IN THIS DOCUMENT IS PROPRIETARY TO Y-S ELECTRONIC, ANY REPRODUCTION IN PART OR WHOLE WITHOUT PRIOR WRITTEN APPROVAL OR AUTHORIZATION OF Y-S ELECTRONIC IS STRICTLY PROHIBITED.

RoHS COMPLIANT

REVISIONS				
REV	ECN NO.	DESCRIPTION	APPROVED BY	DATE
A		△	KING CHIU	2006-09-15



Cover

Product Specification

Material

Insulator : Glass-Filled Thermoplastic PBT, UL94V-0

Contact : Copper alloy

Electrical

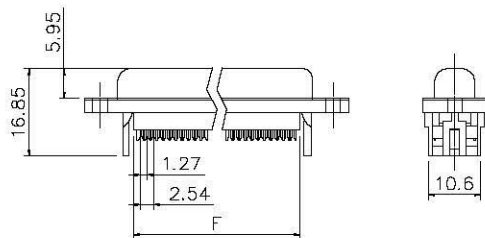
Contact Resistance : 20 milliohms  
Max at 1 AMP DC.

Insulation Resistance : 1000  
megohms at 500 VDC

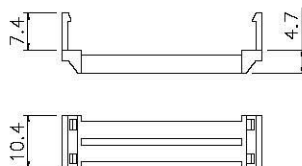
Dielectric Withstanding Voltage :  
1000 VAC/rms 60Hz for 1 minute

Current Rating : 3 AMP

Volatge Rating : 250 VAC/rms 60Hz



With Insulator Support



Strain Relief

Dimensions

Positions	A	B	C	E	F
9	30.50	25.00	18.05	11.08	13.10
15	39.00	33.32	26.35	19.39	20.70
25	53.08	47.04	40.95	33.24	33.68
37	69.25	63.50	55.60	49.86	50.30

DO NOT SCALE DRAWING

DIMENSIONS:  
 MM [INCH]  INCH [mm]  MM ONLY

UNLESS OTHERWISE SPECIFIED,  
GENERAL TOLERANCE:  
 DECIMALS ANGLES  
 .X ±0.38 [0.015] X° ±3°  
 .X ±0.25 [0.010] .X° ±1.0°  
 .XX ±0.13 [0.005]

MATERIAL  
 FINISH

CAD GENERATED DRAWING,  
DO NOT MANUALLY UPDATE  
 DRAWN BY AND DATE  
JUSTIN XING 05-29-06

CHECKED BY AND DATE  
JUSTIN XING 05-29-06  
 APPROVED BY AND DATE  
KING CHIU 05-29-06

THIRD ANGLE PROJECTION

**All Connectors**  
 www.allconnectors.de  
 Tel.: 0049 711 7006502  
 Fax: 0049 711 7006504  
 info@allconnectors.de  
 kettenmarkt.de

TITLE  
 103 SERIES  
 D-SUB IDC TYPE

DRAWING NO.  
 103-XX1X0X011

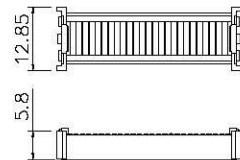
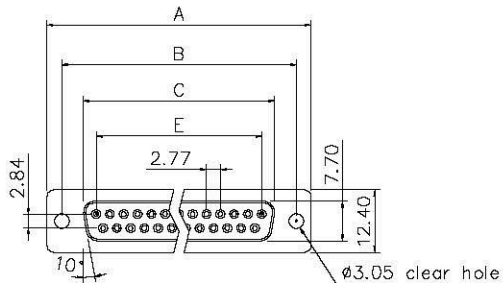
REV  
 A

FILE NO. SHEET 2 OF 5

THE INFORMATION CONTAINED IN THIS DOCUMENT IS PROPRIETARY TO Y-S ELECTRONIC, ANY REPRODUCTION IN PART OR WHOLE WITHOUT PRIOR WRITTEN APPROVAL OR AUTHORIZATION OF Y-S ELECTRONIC IS STRICTLY PROHIBITED.

RoHS COMPLIANT

REVISIONS				
REV	ECN NO.	DESCRIPTION	APPROVED BY	DATE
A		△	KING CHIU	2006-12-14



Cover

Product Specification

Material

Insulator : Glass-Filled Thermoplastic PBT, UL94V-0  
Contact : Copper alloy

Electrical

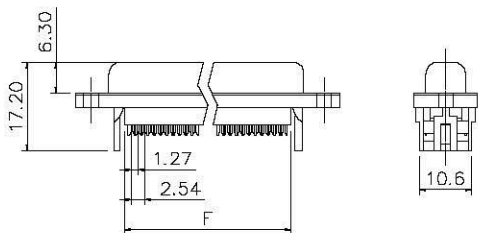
Contact Resistance : 20 milliohms  
Max at 1 AMP DC.

Insulation Resistance : 1000  
megohms at 500 VDC

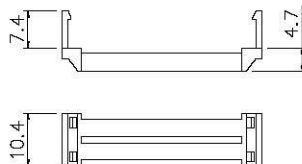
Dielectric Withstanding Voltage :  
1000 VAC/rms 60Hz for 1 minute

Current Rating : 3 AMP

Volatge Rating : 250 VAC/rms 60Hz



With Insulator Support



Strain Relief

Dimensions

Positions	A	B	C	E	F
9	30.50	25.00	16.00	11.08	13.10
15	39.00	33.32	24.27	19.39	20.70
25	53.08	47.04	38.22	33.24	33.68
37	69.40	63.50	54.65	49.86	50.30

DO NOT SCALE DRAWING

DIMENSIONS:	
<input type="checkbox"/> MM [INCH]	<input type="checkbox"/> INCH [mm]
<input checked="" type="checkbox"/> MM ONLY	
UNLESS OTHERWISE SPECIFIED, GENERAL TOLERANCE:	
DECIMALS	ANGLES
.X ±0.38 [0.015]	X° ±3°
.XX ±0.25 [0.010]	.X° ±1.0°
.XXX ±0.13 [0.005]	
MATERIAL	
FINISH	

CAD GENERATED DRAWING, DO NOT MANUALLY UPDATE
DRAWN BY AND DATE JUSTIN XING 05-29-06
CHECKED BY AND DATE JUSTIN XING 05-29-06
APPROVED BY AND DATE KING CHIU 05-29-06
THIRD ANGLE PROJECTION
SCALE: 1 : 1
SIZE: A3

**Allconnectors**

www.allconnectors.de  
Tel.: 0940 711 00000  
70794 Eichenstadt, Germany

Info@allconnectors.de  
Fax: 0940 711 00004  
kct@connectors.de

TITLE  
103 SERIES  
D-SUB IDC TYPE

DRAWING NO.  
103-XX2X0X011

REV  
A

FILE NO.: SHEET 3 OF 5

1 2 3 4 5 6 7 8

THE INFORMATION CONTAINED IN THIS DOCUMENT IS PROPRIETARY TO Y-S ELECTRONIC, ANY REPRODUCTION IN PART OR WHOLE WITHOUT PRIOR WRITTEN APPROVAL OR AUTHORIZATION OF Y-S ELECTRONIC IS STRICTLY PROHIBITED.

RoHS COMPLIANT

REVISIONS				
REV	ECN NO.	DESCRIPTION	APPROVED BY	DATE

Ordering Information

103 -  $\frac{XX}{a} \frac{X}{b} \frac{X}{c} \frac{X}{d} \frac{X}{e} \frac{X}{f} \frac{X}{g} \frac{X}{h}$

a. No. Of Pins

- 09: 09 positions
- 15: 15 positions
- 25: 25 positions
- 37: 37 positions

b. Contact Type:

- 1: Male
- 2: Female

c. Contact Plating :

- 0. Gold flash selective gold(standard)
- 1. 5u"selective gold on contact
- 2. 10u"selective gold on contact
- 3. 15u"selective gold on contact
- 4. 30u"selective gold on contact
- 5. 50u"selective gold on contact
- 6. Gold flash full gold
- 7. Gold flash selective gold(Phosphor Bronze)
- 8. Matte tin
- 9. 15u"selective gold on contact(Phosphor Bronze)

d. Shell plating :

- 0. All plastic
- 1. Nickel(standard)
- 2. Tin
- 3. Cr<sup>+6</sup>yellow chrome
- 4. Gold flash
- 5. Tin, dimple
- 6. Cr<sup>+6</sup>yellow chrome, dimple
- 7. Tin tab shell dimple
- 8. Special tin, dimple
- 9. Cr<sup>+3</sup>yellow chrome
- A. Cr<sup>+3</sup>yellow chrome, dimple
- B. Matte tin
- C. All plastic(With UL logo)

e. Insulator Color :

- 1: Blue
- 2: Black(standard)
- 3: White
- 4: Gray
- 5: Green
- 6. Pc99 blue
- 7. Pc99 green
- 8. Pc99 yellow

f. Flange Mounting Option :

- 0:  $\varnothing$ 3.05mm clear hole
- 1: #4-40 unc Threaded Hole
- 2: M2, 6 Threaded Hole
- 3: M3 Threaded Hole
- 4: #4-40 unc Threaded Hole: 4mm
- 5: #4-40 unc Threaded Hole, with #4-40 unc(5.8\*10.8mm)screwlock installed
- 6: #4-40 unc Threaded Hole, with M3(5.8\*10.8mm)screwlock installed
- 7: #4-40 unc Threaded Hole(2.5mm)
- 8: Back hex rivet, 5.9mm; M3
- 9: M2 Threaded Hole
- A: #4-40 unc Threaded Hole, with #4-40 unc(5.8\*11.8mm)screwlock bulk-packed
- B: #4-40 unc Threaded Hole, with #4-40 unc(4.8\*11.8mm)screwlock installed
- C: Front hex rivet, 5.9mm; #4-40 unc
- D: Front hex rivet, 5.9mm; M3
- E: Back hex rivet, 5.9mm; #4-40 unc

g. Insulator support type:

- 1: with insulator support
- 2: w/o insulator support


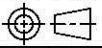
h. SR type:

- 1: plastic strain relief
- 2: metal shell strain relief
- 3: without strain relief

i. Insulator type

- N: Economical type

DO NOT SCALE DRAWING

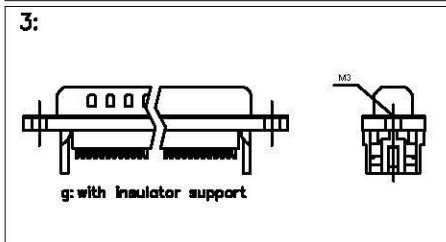
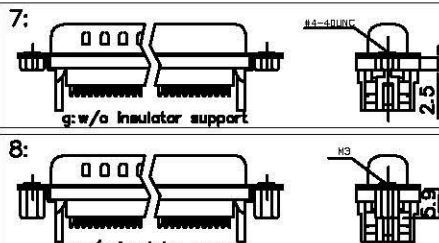
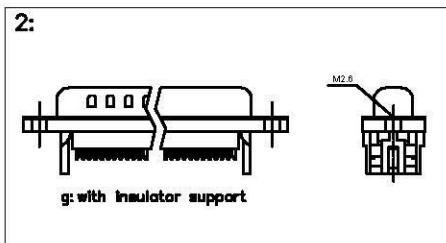
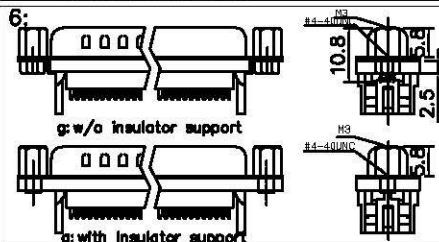
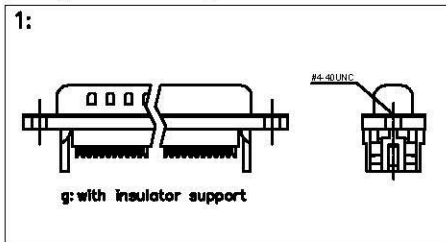
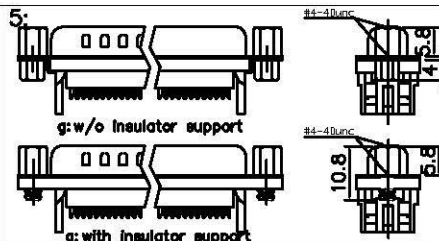
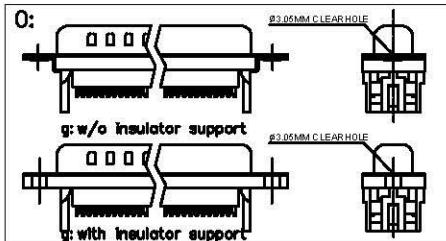
DIMENSIONS: <input type="checkbox"/> MM [INCH] <input type="checkbox"/> INCH [mm] <input checked="" type="checkbox"/> MM ONLY		CAD GENERATED DRAWING, DO NOT MANUALLY UPDATE DRAWN BY AND DATE JUSTIN XING 07-20-06			
UNLESS OTHERWISE SPECIFIED, GENERAL TOLERANCE: DECIMALS      ANGLES X ±0.38 [0.015]    X° ±3° .X ±0.25 [0.010]    .X° ±1.0° .XX ±0.13 [0.005]		CHECKED BY AND DATE JUSTIN XING 07-20-06 APPROVED BY AND DATE KING CHIU 07-20-06 THIRD ANGLE PROJECTION		www.allconnectors.de Tel: +0049 711 7602503 70721 Tübingenstadt - Germany info@allconnectors.de Fax: 0049 711 7602504 Hebenwerderstr. 25	
MATERIAL FINISH		 SCALE: 1:1      SIZE: A3		TITLE 103 SERIES D-SUB IDC TYPE	
DRAWING NO. 103-XXXXXXXXXX				REV C	
FILE NO.				SHEET 4 OF 5	

THE INFORMATION CONTAINED IN THIS DOCUMENT IS PROPRIETARY TO Y-S ELECTRONIC, ANY REPRODUCTION IN PART OR WHOLE WITHOUT PRIOR WRITTEN APPROVAL OR AUTHORIZATION OF Y-S ELECTRONIC IS STRICTLY PROHIBITED.

RoHS COMPLIANT

REVISIONS				
REV	ECN NO.	DESCRIPTION	APPROVED BY	DATE
A				

f: Flange Mounting Option:



CONSULT SALES OR FACTORY FOR OTHER MOUNTING STYLE OPTIONS

DO NOT SCALE DRAWING

DIMENSIONS:	
<input type="checkbox"/> MM [INCH]	<input type="checkbox"/> INCH [mm]
<input checked="" type="checkbox"/> MM ONLY	
UNLESS OTHERWISE SPECIFIED, GENERAL TOLERANCE:	
DECIMALS	ANGLES
.X ±0.38 [0.015]	X° ±3°
.X ±0.25 [0.010]	.X° ±1.0°
.XX ±0.13 [0.005]	
MATERIAL	
FINISH	

CAD GENERATED DRAWING, DO NOT MANUALLY UPDATE
DRAWN BY AND DATE SUE ZHANG 10-20-05
CHECKED BY AND DATE JUSTIN XING 10-20-05
APPROVED BY AND DATE KING CHIU 10-20-05
THIRD ANGLE PROJECTION
SCALE: 1:1
SIZE: A3

<small>www.allconnectors.de TEL: 0049 731 900000 70774 Filderstadt - Germany</small>	
<small>en:Globalconnectors.de TEL: 0049 731 900000 86-Heimerst. 25</small>	
TITLE	
103 SERIES D-SUB IDC TYPE	
DRAWING NO.	REV
103-XXXXXXXXXX	A
FILE NO:	SHEET 5 OF 5