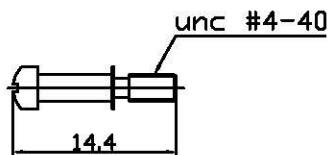
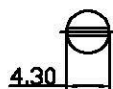
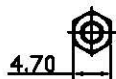
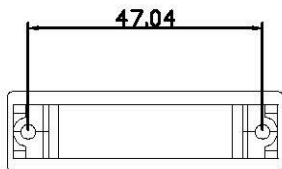


THE INFORMATION CONTAINED IN THIS DOCUMENT IS PROPRIETARY TO Y-S ELECTRONIC, ANY REPRODUCTION IN PART OR WHOLE WITHOUT PRIOR WRITTEN APPROVAL OR AUTHORIZATION OF Y-S ELECTRONIC IS STRICTLY PROHIBITED.

RoHS COMPLIANT

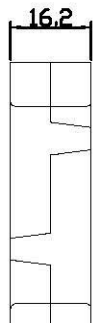
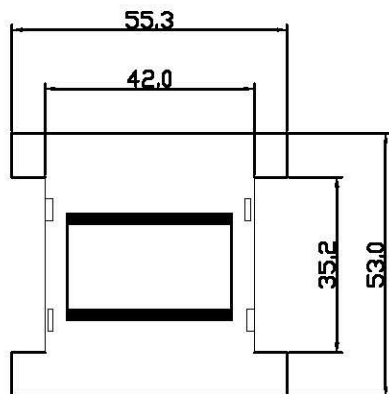
REVISIONS				
REV	ECN NO.	DESCRIPTION	APPROVED BY	DATE



Product Specification

Material

Hood :ABS thermoplastic UL94V-0 rates  
 UL94V-0 rates  
 Screwlock :Brass, 100u" min Nickel Plated.



Ordering Information

157 -  $\frac{XX}{a}$   $\frac{X}{b}$   $\frac{XX}{c}$   $\frac{X}{d}$   $\frac{X}{e}$   $\frac{X}{f}$

- a. No. DF Pins (Top)
- b. Contact Type (Top)
  - 1: Male
  - 2: Female
- c. No. DF Pins (Bottom)
- d. Contact Type (Bottom)
  - 1: Male
  - 2: Female
- e. Shell Type
  - 1: Plastic
  - 2: Nickel plate metalized
- f. Nut Type
  - 1:with Nut
  - 2:w/o Nut

DO NOT SCALE DRAWING

25pin to 25pin type

**Note:**  
 Male to Male type not need add nut.

DIMENSIONS: <input type="checkbox"/> MM (INCH) <input type="checkbox"/> INCH (mm) <input checked="" type="checkbox"/> MM ONLY		CAD GENERATED DRAWING, DO NOT MANUALLY UPDATE DRAWN BY AND DATE JUSTIN XING 07-03-06			
UNLESS OTHERWISE SPECIFIED, GENERAL TOLERANCE: DECIMALS .X ±0.38 [0.015] .X ±0.25 [0.010] .XX ±0.13 [0.005]		CHECKED BY AND DATE JUSTIN XING 07-03-06 APPROVED BY AND DATE KING CHIU 07-03-06		TITLE 157 SERIES D-SUB GENDER CHANGER COVER	
MATERIAL FINISH		THIRD ANGLE PROJECTION 		DRAWING NO. 157-25X25XX	
SCALE: NONE   SIZE: A3		FILE NO.:		REV A	
SHEET 5 OF 6				SHEET 5 OF 6	