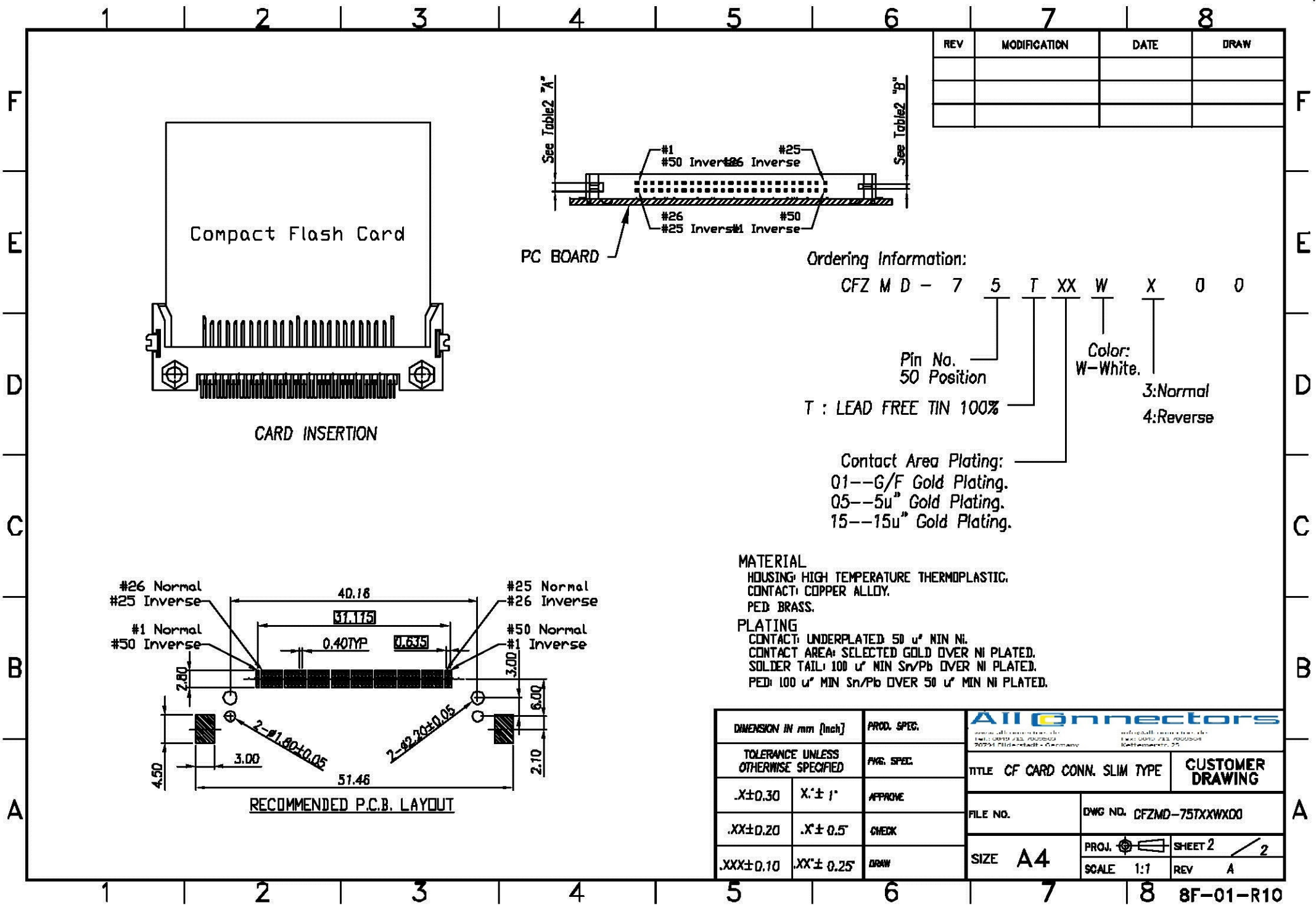
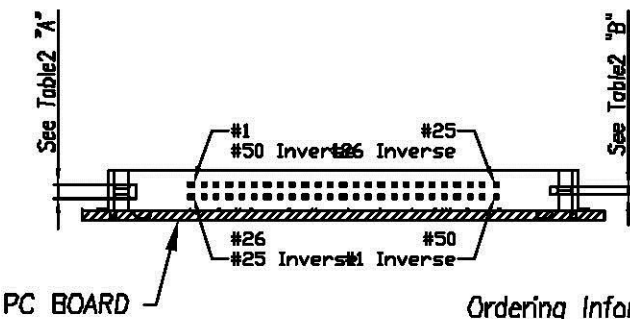


| Pin Type | DIM L   | Pin Type       | REV | MODIFICATION | DATE       | DRAW    |
|----------|---------|----------------|-----|--------------|------------|---------|
| Detect   | 3.5 mm  | 25,26          | B   | EN-03-1019   | 10/30/2003 | TONY    |
| General  | 4.25 mm | All Other Pins | C   | EN-06-1212   | 95/12/20   | TERENCE |
| Power    | 5.0 mm  | 1,13,38,50     |     |              |            |         |

| DIMENSION IN mm [Inch]               |              | PROD. SPEC.            | KINGFONT PRECISION INDUSTRIAL CO., LTD.     |                    |
|--------------------------------------|--------------|------------------------|---|--------------------|
| TOLERANCE UNLESS OTHERWISE SPECIFIED |              | SP0057                 | TITLE CF CARD CONN. TYPE2 ,SLIM NORMAL TYPE |                    |
| .X±0.30                              | X.*± 1"      | PKG. SPEC. PPP-CEC-001 | FILE NO. KFP-057                            | CUSTOMER DRAWING   |
| .XX±0.20                             | .X.*± 0.5"   | APPROVE                | DWG NO. CFCMD-75TXXB000                     |                    |
| .XXX±0.10                            | .XX.*± 0.25" | CHECK                  | SIZE <b>A4</b>                              | PROJ.  SHEET 1 / 2 |
|                                      |              | DRAW                   | SCALE 1:1                                   | REV C              |



| REV | MODIFICATION | DATE | DRAW |
|-----|--------------|------|------|
|     |              |      |      |
|     |              |      |      |
|     |              |      |      |



Ordering Information:  
 CFZ M D - 7 5 T XX W X 0 0

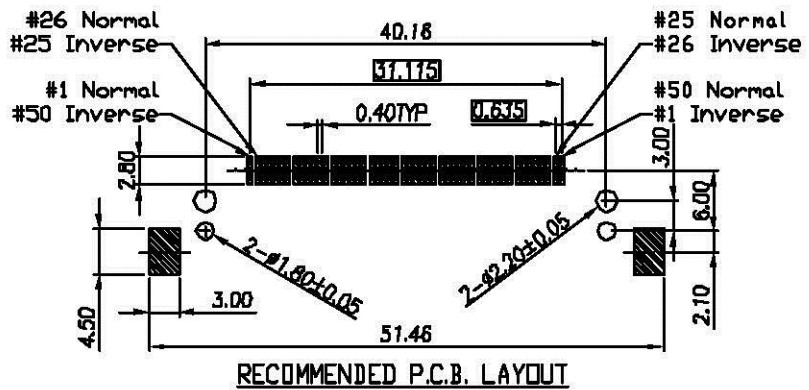
Pin No. 50 Position  
 T : LEAD FREE TIN 100%

Color: W-White.  
 3:Normal  
 4:Reverse

Contact Area Plating:  
 01--G/F Gold Plating.  
 05--5u" Gold Plating.  
 15--15u" Gold Plating.

**MATERIAL**  
 HOUSING: HIGH TEMPERATURE THERMOPLASTIC.  
 CONTACT: COPPER ALLOY.  
 PED: BRASS.

**PLATING**  
 CONTACT: UNDERPLATED 50 u" MIN NI.  
 CONTACT AREA: SELECTED GOLD OVER NI PLATED.  
 SOLDER TAIL: 100 u" MIN Sn/Pb OVER NI PLATED.  
 PED: 100 u" MIN Sn/Pb OVER 50 u" MIN NI PLATED.



| DIMENSION IN mm [Inch]               |             | PROD. SPEC. | All Connectors   |                                       |
|--------------------------------------|-------------|-------------|--|---------------------------------------|
| TOLERANCE UNLESS OTHERWISE SPECIFIED |             | FIG. SPEC.  | <small>www.allconnectors.de</small><br><small>www.allconnectors.com</small><br><small>70734 Fildesrieden - Germany</small> |                                       |
| .X±0.30                              | .X'± 1'     | APPROV.     | TITLE CF CARD CONN. SLIM TYPE  | CUSTOMER DRAWING                      |
| .XX±0.20                             | .X'± 0.5'   | CHECK       | FILE NO.   | DWG NO. CFZMD-75TXXWX00               |
| .XXX±0.10                            | .XX'± 0.25' | DRAW        | SIZE A4  | PROJ.  SHEET 2 / 2<br>SCALE 1:1 REV A |