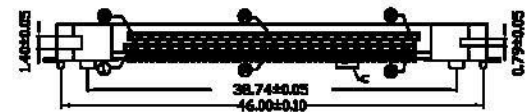
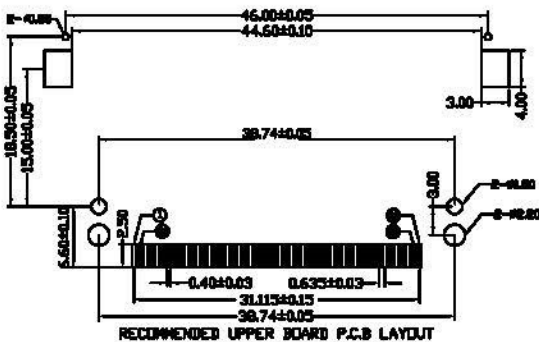
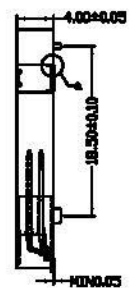
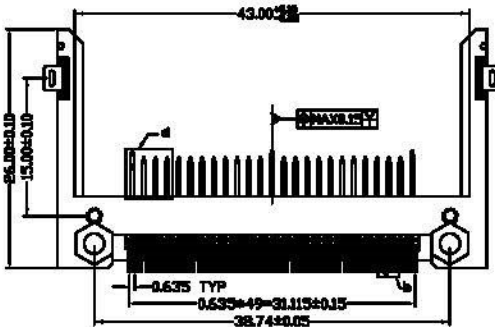
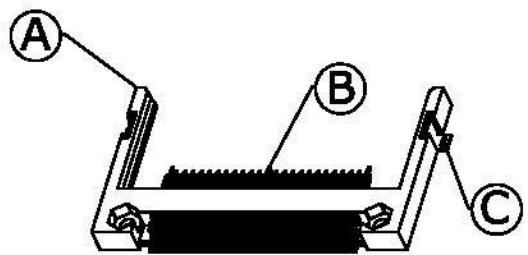
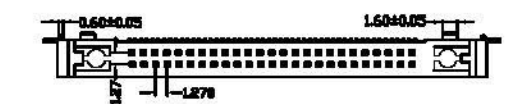


SWITCH CIRCUIT

MATERIAL AND FINISH AS BELOW

WHEN CARD IS EJECTED	WHEN CARD IS INSERTED
----------------------	-----------------------

A	Housing	LCP UL94V-0, Color:Ivory	E
B	Contact	Brass C2680, Gold Plated Over Nickel	F
C	Holddown	Brass C2680, Tin Plated	G
D			H



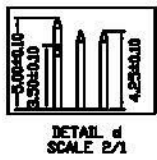
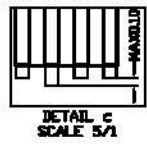
SPECIFICATION:

- ELECTRICAL**
 - Current Rating: 0.5AMP
 - Voltage Rating: 100VAC
 - Contact Resistance: 40mΩ
 - Insulation Resistance: 1000MΩ
 - Dielectric Withstanding Voltage: 500VAC for 1 minute

- MECHANICAL**
 - Durability: 10000Cycle
 - Insertion Force: 28.8N
 - Extraction Force: 4.9N

- ENVIRONMENTAL**
 - Operating temperature range: -40°C to +85°
 - Storage temperature range: -40°C to +85°

- SOLDER ABILITY**
 - Recommended IR Reflow Temperature: 260°C 10Sec



PIN NUMBER	DIML
25 26	3.50
ALL OTHER PINS	4.25
1 13 38 50	5.00

P1	P2	P3	P4	P5	P6	P7	P8	P9	P10	P11	P12
----	----	----	----	----	----	----	----	----	-----	-----	-----

PIN ASSIGNMENT

101D-RAAB-R01	CF Socket Slim Type Peg:38.74,Contact Area:Gold Flash
---------------	---

PRODUCT NO.	DESCRIPTION																													
	<table border="1"> <tr> <th colspan="3">UNLESS OTHERWISE SPECIFIED TOLERANCE</th> </tr> <tr> <td>ANGLES</td> <td>ANG.</td> <td>±5°</td> </tr> <tr> <td></td> <td>0.</td> <td>±0.3</td> </tr> <tr> <td>LINEAR</td> <td>0.0</td> <td>±0.25</td> </tr> <tr> <td></td> <td>0.00</td> <td>±0.20</td> </tr> <tr> <td>SCALE</td> <td>AS SHOWN</td> <td>UNIT: mm</td> </tr> <tr> <td>DRAWN</td> <td>Willis</td> <td>2012/11/13</td> </tr> <tr> <td>CHECKED</td> <td>Angel</td> <td>2012/11/13</td> </tr> <tr> <td>APPROVED</td> <td>Ken</td> <td>2012/11/13</td> </tr> </table>			UNLESS OTHERWISE SPECIFIED TOLERANCE			ANGLES	ANG.	±5°		0.	±0.3	LINEAR	0.0	±0.25		0.00	±0.20	SCALE	AS SHOWN	UNIT: mm	DRAWN	Willis	2012/11/13	CHECKED	Angel	2012/11/13	APPROVED	Ken	2012/11/13
UNLESS OTHERWISE SPECIFIED TOLERANCE																														
ANGLES	ANG.	±5°																												
	0.	±0.3																												
LINEAR	0.0	±0.25																												
	0.00	±0.20																												
SCALE	AS SHOWN	UNIT: mm																												
DRAWN	Willis	2012/11/13																												
CHECKED	Angel	2012/11/13																												
APPROVED	Ken	2012/11/13																												
	www.allconnectors.de info@allconnectors.de Tel.: 0049 711 7009003 Fax: 0049 711 7009004 70794 Filderstadt - Germany Kettmersstr. 25																													
	DRAWN NAME: CF Slim Socket Reverse Type Locating Peg:38.74																													
	PRODUCT NO.	101D-RAAB-R01																												

△ Revise:											
△ Revise:											
△ Revise:											

REV.	DESCRIPTION	DATE	REV.	DESCRIPTION	DATE	SIZE	REV.	FILE NAME
1						A4	1.0	101D-RAAB-R01_B_1