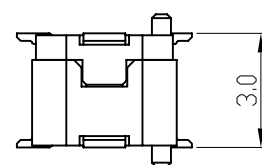
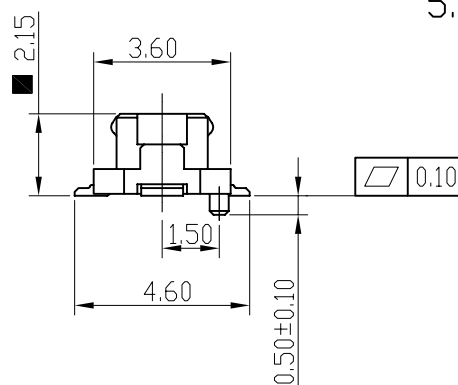


RECOMMENDED P.C. BOARD LAYOUT



MATING HEIGHT

- NOTES:
- MATERIAL:
    - CONTACT: COPPER ALLOY.
    - HOUSING: LCP WITH GLASS FIBER REINFORCED, PER UL 94V-0, BLACK COLOR.
    - HOLD\_DOWN: COPPER ALLOY.
  - PLATING:
    - UNDER PLATING: NICKEL UNDERPLATE OVERALL.
    - CONTACT AREA: 0.12um(5u") MIN. GOLD PLATING OVER NICKEL UNDERPLATE IN CONTACT AREA.
    - SOLDER TAIL: G/F OVER NICKEL ON SOLDER TAIL.
  - THE DIMENSIONS MARKED WITH "■" ARE CRITICAL DIMENSIONS.
  - COPLANARITY IS 0.10mm MAX.
  - RoHS COMPLIANT PRODUCTS.

PRODUCT NUMBER:

320A-XX P C A  
1 2 3 4

- Contact:  
08,14,16,30 Pin
- Type  
P: Plug
- Plating  
C: 5u" gold
- Package  
A: Reel

ITEM NO.	DESCRIPTION	QT'Y REQUEST	MATERIAL		
3	HOLD DOWN	2	BRASE		
2	CONTACT	SEE TABLE 1	PH. BRONZE		
1	HOUSING	1	LCP RESIN		
TABLE 1					
30	10.60	7.00	8.20	9.10	10.60
16	7.10	3.50	4.70	5.60	7.10
14	6.60	3.00	4.20	5.10	6.60
08	5.10	1.50	2.70	3.60	5.10
NO. OF PIN	A	B	C	D	E
DIM					

Product Number	Description
320A-XXPCA	Board to Board Plug, Pitch 0.5mm , Mating Height 3.0mm, 5u" Gold Plating

UNLESS OTHERWISE SPECIFIED TOLERANCE		 www.allconnectors.eu   info@allconnectors.eu Tel. +49 (0)711 / 358 110 20   Fax +49 (0)711 / 358 110 25	
ANG.	±5°		
0.	±0.3		
.0	±0.25		
.00	±0.20		
SCALE:	AS SHOWN	UNIT: mm	
DRAWN	Willis	2010/12/16	DRAWN NAME: BTB Plug SMT Type, Pitch 0.5mm Mating Height 3.0mm
CHECKED	Angel	2010/12/16	
APPROVED	Ken	2010/12/16	
PRODUCT NO.	320A-XXPCA		FILE NAME: 320A-XXPCA_B_1
REV.	DATE	SIZE A4	

REV.	DESCRIPTION	DATE	SIZE	REV.
1	2	3	4	5