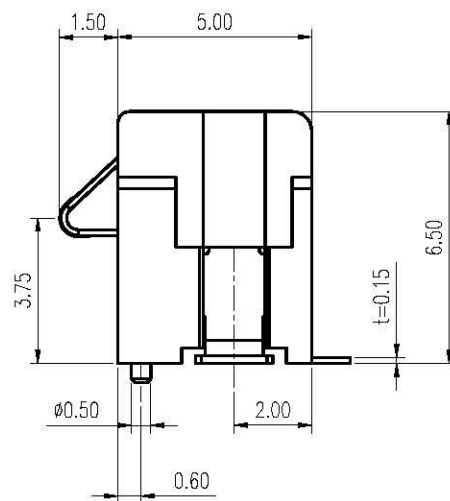
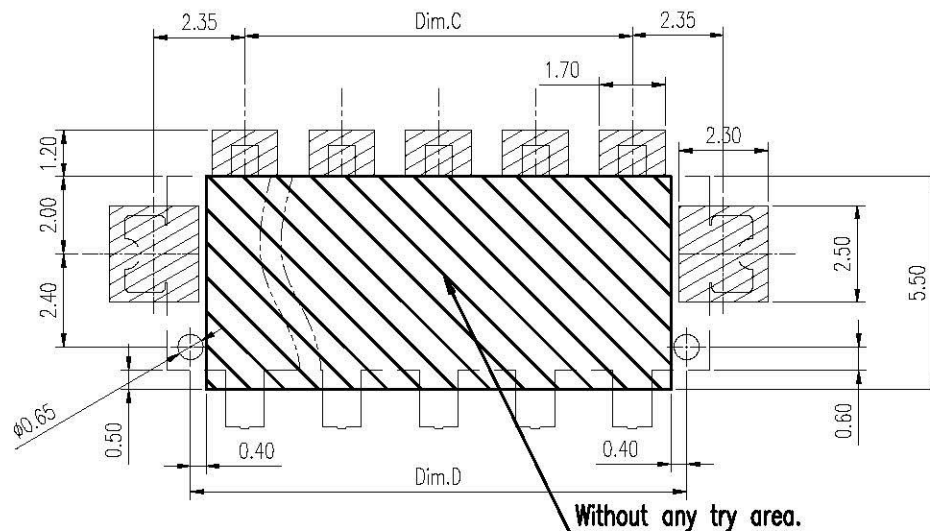
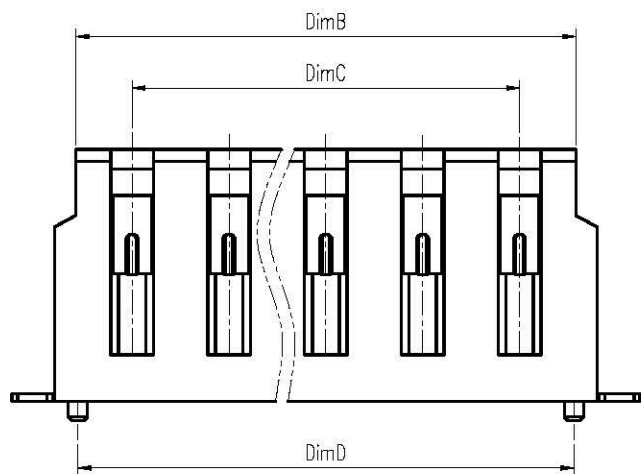
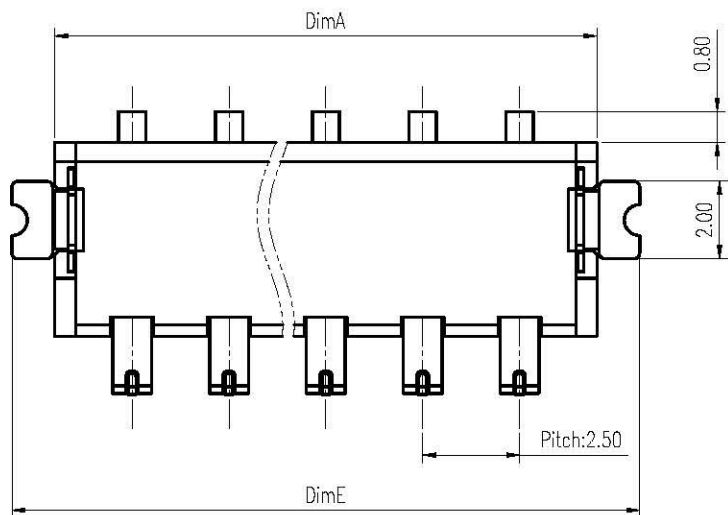


1 2 3 4 5 6 7 8 9 0

J
I
H
G
F
E
D
C
B
A



Notes:

1. **Material :**
 Housing : Thermoplastic UL 94V-0 , Black
 Terminal : Copper Alloy
 Latch : Copper Alloy
2. **Finish :**
 Terminal : Selected Gold on Contact Area, Gold Flash on Solder Tails, Both over 50u" Min. Ni Under-plated Overall
 Latch : Tin Plating overall 50u" Min., Nickel 50u" Min. Under-plated Overall.

Dimension Information:

Part No.	Dim.	Dim.A	Dim.B	Dim.C	Dim.D	Dim.E
BCS25-W65P-03		9.00	7.90	5.00	7.80	11.20
BCS25-W65P-04		11.50	10.40	7.50	10.30	13.70
BCS25-W65P-05		14.00	12.90	10.00	12.80	16.20
BCS25-W65P-06		16.50	15.40	12.50	15.30	18.70
BCS25-W65P-07		19.00	17.90	15.00	17.80	21.20
BCS25-W65P-08		21.50	20.40	17.50	20.30	23.70

BCS25-W65P-xx-LF
LEADFREE

Allconnectors

www.allconnectors.de
T: +49 211 2095508
KUKKI Hildertstadt - Germany

info@allconnectors.de
Fax: +49 211 2095504
Kette Markt, LD

PART NO. BCS25-W65P-xx

DWG NO. BCS25-W65P-xx

FILE NO.

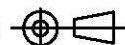
UNIT / mm

SCALE 1:1

CHECKED BY CY

DRAWING BY

PROJECTION



TOLERANCES ARE

.X ± 0.2
.XX ± 0.1
.XXX ±
AWG

DESCRIPTION:

2.5mm Pitch Battery Conn.
Male Type

AREA

REVISIONS

HK

DATE