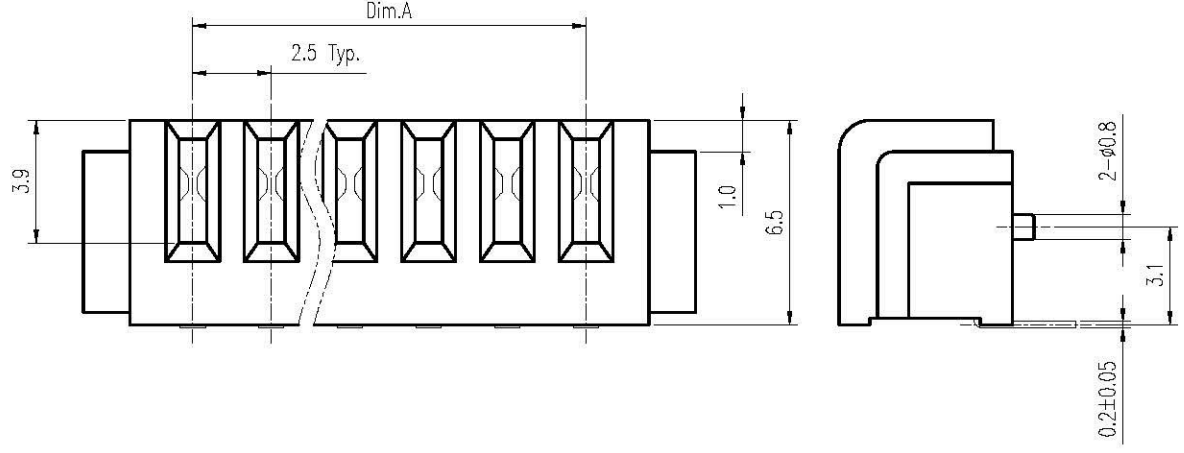
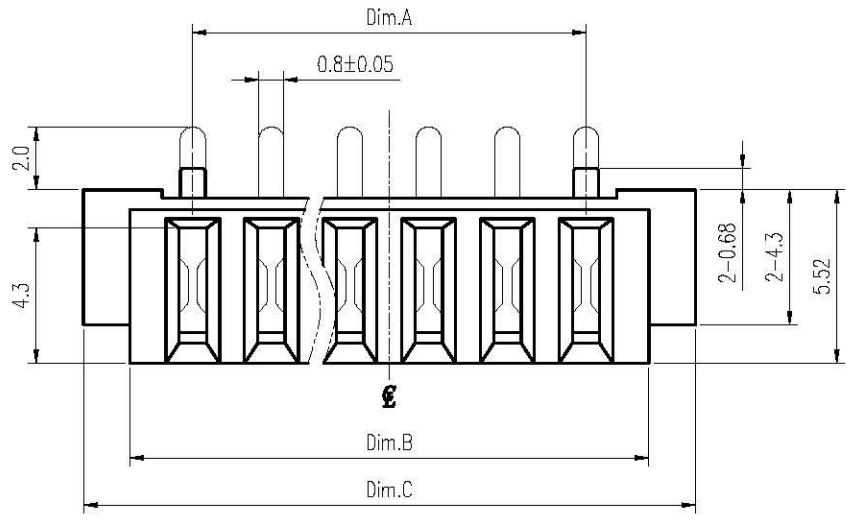


1 2 3 4 5 6 7 8 9 0

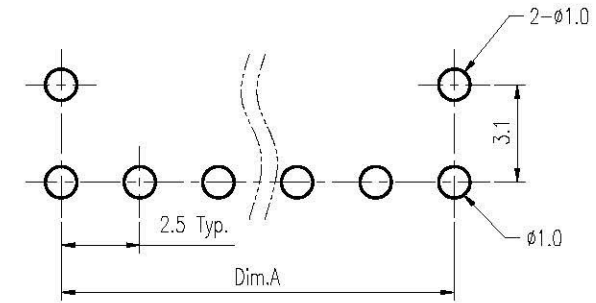
J
I
H
G
F
E
D
C
B
A



- Notes:**
- Material :**
 Housing : Thermoplastic, UL 94V-0
 Terminal : Copper Alloy
 - Finish :**
 Terminal : Selected Gold on Contact Area, 1u"Min. Gold on Solder Tails, Both over 50u" Min. Ni Under-plated Overall

Dimension Information:

Part No.	Dim.	Amount of Pins	Dim.A	Dim.B	Dim.C
BCC25-SR20P-03	3	3	5.0	9.0	11.95
BCC25-SR20P-04	4	4	7.5	11.5	14.45
BCC25-SR20P-05	5	5	10.0	14.0	16.95
BCC25-SR20P-06	6	6	12.5	16.5	19.45
BCC25-SR20P-07	7	7	15.0	19.0	21.95
BCC25-SR20P-08	8	8	17.5	21.5	24.45
BCC25-SR20P-09	9	9	20.0	24.0	26.95
BCC25-SR20P-10	10	10	22.5	26.5	29.45
BCC25-SR20P-11	11	11	25.0	29.0	31.95



Recommended P.C.B. Layout
 Layout Tolerance = ± 0.05 mm

BCC25-SR20P-xx-LF
 LEADFREE

RoHS Compliant

Allconnectors
 www.allconnectors.de
 Tel: 0910 211 700300
 70794 Filderstadt - Germany
 info@allconnectors.de
 Fax: 0910 211 700504
 Kellernstr. 25

PART NO. BCC25-SR20P-xx

DWG NO. BCC25-SR20P-xx

CHECKED BY CY

DRAWING BY

TOLERANCES ARE

.X±0.2
.XX±0.1

.XXX±
AWG

FILE NO.

UNIT / mm

SCALE 1:1

PROJECTION

DESCRIPTION:

2.5mm Pitch Battery Conn. Female Type

AREA

REVISIONS

HK

DATE