

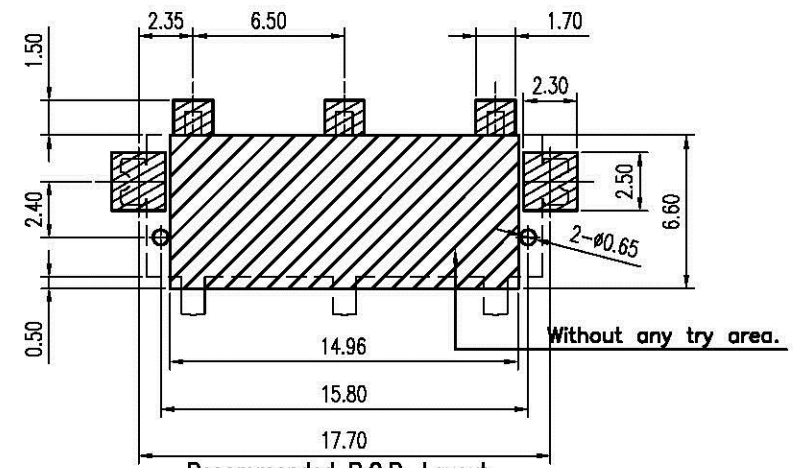
REV.	DESCRIPTION	ECN NO.	DATE	DRAWER
A	New Released		10/12/2007	Gear
B	Add Packing \triangle_B x1	EC0908050	08/20/2009	Steven
C	Modified Drawing \triangle_C x1	EC1008034	08/09/2010	Steven

Notes:

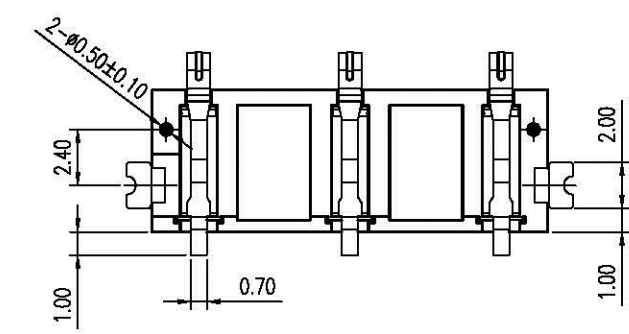
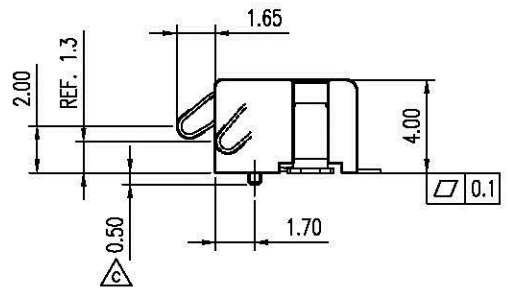
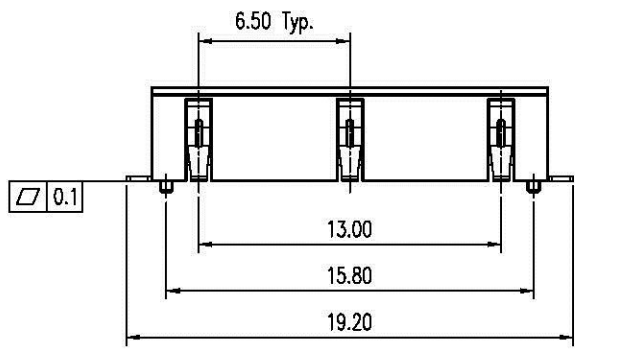
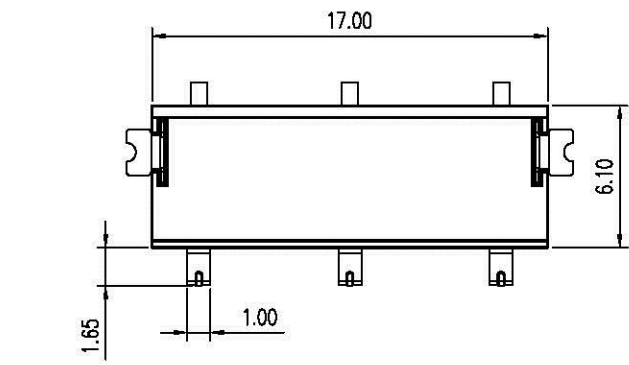
- Material :
 Housing : Thermoplastic UL 94V-0 , Black
 Terminal : Copper Alloy
 Latch : Copper Alloy
- Finish :
 Terminal : Selected Gold on Contact Area, Gold Flash on Solder Tails, Both over 50u" Min. Ni Under-plated Overall
 Latch : Tin Plating overall 50u" Min., Nickel 50u" Min. Under-plated Overall.
- Order Information :
 T SN1-02100-03 X X

\triangle_B Packing:
 T : Tube
 R : Reel

- Packing:
- 1 : Gold Flash on Contact Area.
 - 2 : 2u" Min. Gold on Contact Area.
 - 3 : 5u" Min. Gold on Contact Area.
 - 4 : 10u" Min. Gold on Contact Area.
 - 5 : 15u" Min. Gold on Contact Area.
 - 8 : 30u" Min. Gold on Contact Area.



Recommended P.C.B. Layout
 Layout Tolerance = ± 0.05 mm
 P.C.B Thickness = 1.00mm ± 0.05



DIMENSION IN mm [inch]		All Connectors		Title	6.5mm Pitch Battery Conn. Male Type	
Tolerance unless otherwise specified		www.allconnectors.de	info@allconnectors.de	Dwg No.	TSN1-02100-03XX	
X.	± 0.30	X.'	$\pm 10'$	File No.	PO8027	
X.X	± 0.20	X.X'	$\pm 5'$	CUSTOMER DRAWING		
X.XX	± 0.15	X.XX'	$\pm 2'$			
X.XXX	\pm	X.XXX'	\pm	Approver:	Checker:	Drawer: Steven
						08/09/2010
						Scale: 3 : 1
						Size: A 4
						Rev : C
						Sheet: 1 / 1