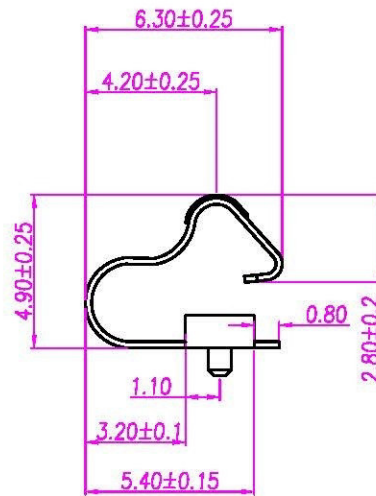
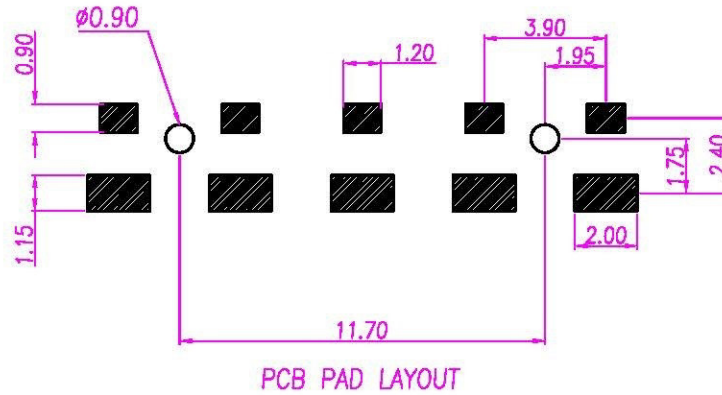
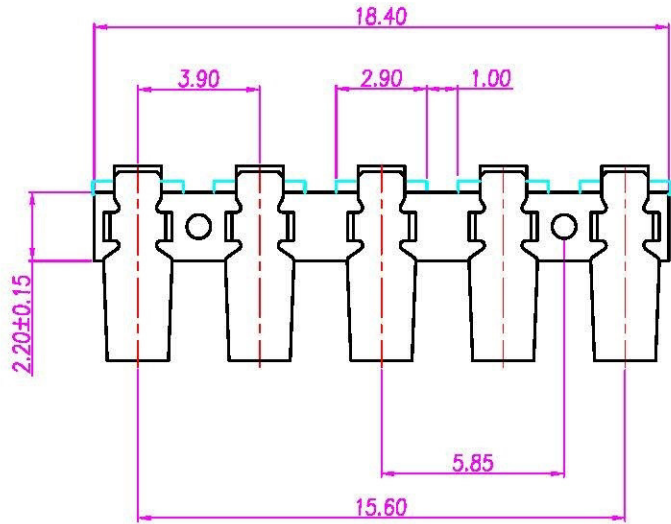


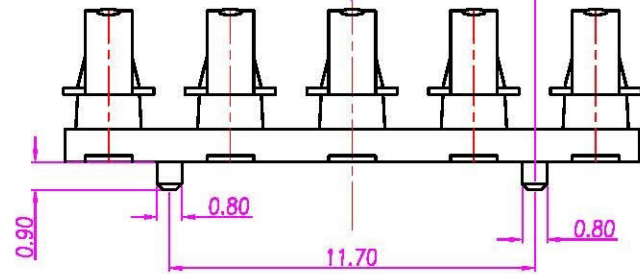
This document is the property of Nan-Yeong Corporation and is delivered on the express condition that it is not to be disclosed, reproduced or used, in whole or in part, for manufacture or sale by anyone other than Nan-Yeong Corporation without its prior consent, and that no right is granted to disclose or to use any information in this document.

# CUSTOMER DRAWING

REV.	DESCRIPTION	APPROVED BY	DATE	ECN NO.
C	RELEASE	Fido Veng	09/10/09	
D				
E				



- MATERIAL :
  - HOUSING : LCP UL94V-0 ; COLOR : BLACK
  - CONTACT : BERYLLIUM COPPER
- FINISH :
  - CONTACT : GOLD 30u" ON CONTACT AERA; SODER: BRIGHT TIN
  - UNDER PLATE : NICKEL



DRAWN	Ku Chou	APPEND	Enly Suen	UNIT	mm	TOLERANCE		<b>All Connectors</b> www.allconnectors.de Tel: 0049 711 7005540 Fax: 0049 711 7005544 70734 Filzelsdorf - Germany info@allconnectors.de Tel: 0049 711 7005544 Kellernstr. 25	TITLE	5PIN 電插座		SHEET	
CHKED	Enly Suen			SCALE	1:1	x ±0.20 xx ±0.10 xxx ±0.05 xxxx ±0.03 ANGULA ±1°			PART NO.	HO-05F2-01	DWG NO.	QC2229	