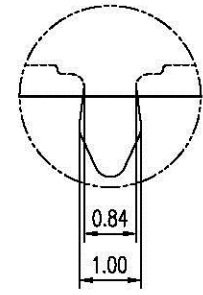
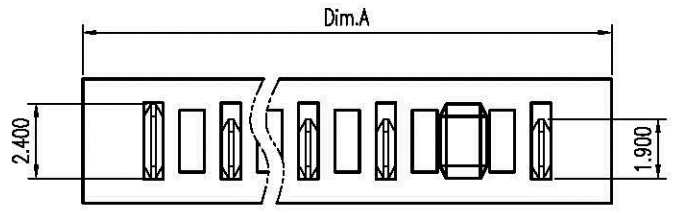


REV.	DESCRIPTION	ECN NO.	DATE	DRAWER
A	New Released		08/20/2010	Steven



Detail A (10:1)

Notes:

- Material :
Housing : Thermoplastic UL 94V-0 ,Black
Terminal : Copper Alloy
- Finish :
Terminal : Selected Gold on Contact Area,
Gold Flash on Solder Tails, Both Over
50u" Min. Nickel Under-plated Overall
- Order Information :

T SB1-052 X 2 -25 X X A

T: RoHS (for High Temperature)

Amount of Pins:

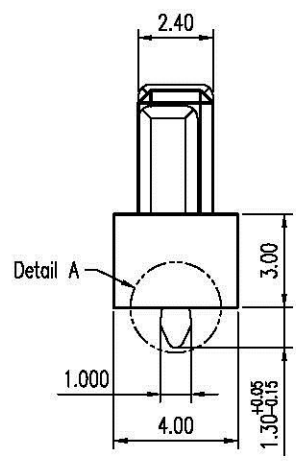
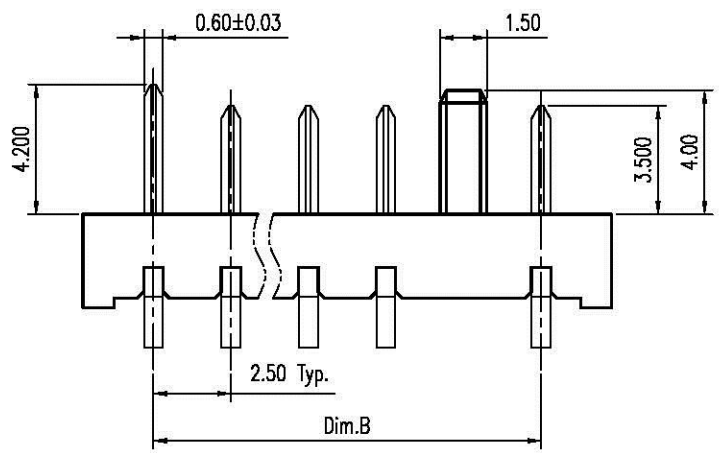
- 4 : 4 Pins
- 5
- 9 : 9 Pins
- A : 10 Pins

Packing Option:

- T : Tube
- 1 : Tube + Cap
- 2 : Reel + Cap

Plating Option:

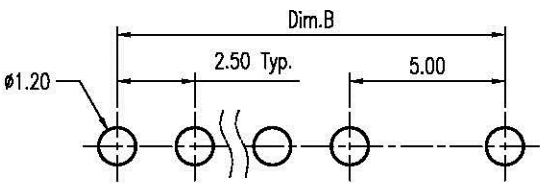
- 1 : G/F Plating on Contact Area
- 2 : 2u" Min. Gold on Contact Area
- 3 : 5u" Min. Gold on Contact Area
- 8 : 30u" Min. Gold on Contact Area



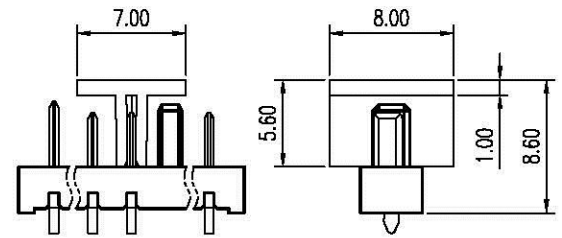
Detail A

Dimension Information:

Part No.	Dim.	Amount of Pins	Dim.A	Dim.B
TSB1-05242-25XXA	4		14.55	10.00
TSB1-05252-25XXA	5		17.05	12.50
TSB1-05262-25XXA	6		19.55	15.00
TSB1-05272-25XXA	7		22.05	17.50
TSB1-05282-25XXA	8		24.55	20.00
TSB1-05292-25XXA	9		27.05	22.50
TSB1-052A2-25XXA	10		29.55	25.00



Recommended P.C.B. Layout
Layout Tolerance = ± 0.05 mm



With CAP

DIMENSION IN mm [inch]		All Connectors	Title	2.5mm Pitch Battery Conn. Male Type
Tolerance unless otherwise specified				
X.	X.' ± 10'	www.allconnectors.de 11811329 118 118/118 118/118 118/118 118/118 Katholischer Markt - Germany	Dwg No.	TSB1-052X2-25XXA
X.X ± 0.38	X.X' ± 5'		File No.	PO3015
X.XX ± 0.25	X.XX' ± 2'		Appraver:	Checker:
X.XXX ± 0.13	X.XXX' ±		Drawer:	Steven 08/20/2010

Scale:	4 : 1
Size:	A 4
Rev :	A
Sheet:	1 / 1