

| REV. | DESCRIPTION | ECN NO. | DATE | DRAWER |
|------|-----------------------------|-----------|------------|--------|
| B | Modified by Customer Design | EC0503004 | 03/09/2005 | Tom |
| C | Modified by Customer Design | EC0611018 | 11/09/2006 | Kelly |
| D | Modified by Customer Design | EC0703014 | 03/06/2007 | Jeff |

Notes:

- Material :
Housing : Thermoplastic UL 94V-0 ,Black
Terminal : Copper Alloy
- Finish :
Terminal : Selected Gold on Contact Area,
Gold Flash on Solder Tails, Both Over
50u" Min. Ni Under-plated Overall
- Order Information :

T SB1-052 X 1-04T X

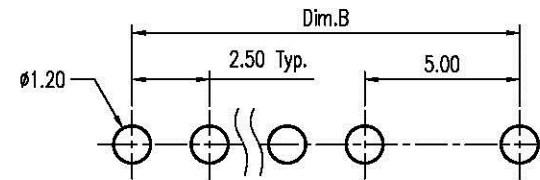
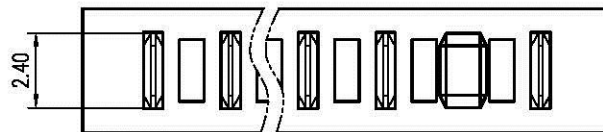
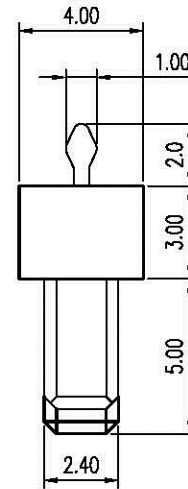
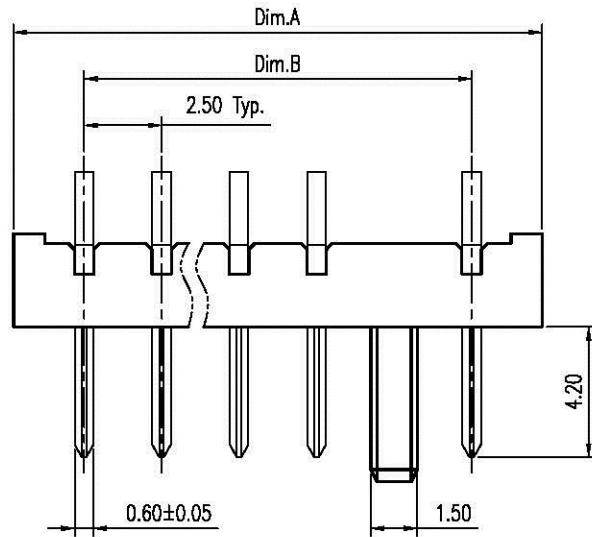
T: RoHS (for High Temperature)

Amount of Pins:

- 4 : 4 Pins
- 5
- 9 : 9 Pins
- A : 10 Pins

Plating Option:

- 2 : 2u" Min. Gold on Contact Area
- 3 : 5u" Min. Gold on Contact Area
- 8 : 30u" Min. Gold on Contact Area



Recommended P.C.B. Layout
Layout Tolerance = ± 0.05 mm

Dimension Information:

| Part No. | Dim. | Amount of Pins | Dim.A | Dim.B |
|-----------------|------|----------------|-------|-------|
| TSB1-05241-04TX | 4 | | 14.55 | 10.00 |
| TSB1-05251-04TX | 5 | | 17.05 | 12.50 |
| TSB1-05261-04TX | 6 | | 19.55 | 15.00 |
| TSB1-05271-04TX | 7 | | 22.05 | 17.50 |
| TSB1-05281-04TX | 8 | | 24.55 | 20.00 |
| TSB1-05291-04TX | 9 | | 27.05 | 22.50 |
| TSB1-052A1-04TX | 10 | | 29.55 | 25.00 |

| DIMENSION IN mm [inch] | |
|--------------------------------------|------------|
| Tolerance unless otherwise specified | |
| X. | X.' ± 10' |
| X.X ± 0.38 | X.X' ± 5' |
| X.XX ± 0.25 | X.XX' ± 2' |
| X.XXX ± 0.13 | X.XXX' ± |

All Connectors

www.allconnectors.de
Tel: 0049 711 7000501
79791 Filzschmitt - Germany
info@allconnectors.de
Tel: 0049 711 7000504
Kettenmerstr. 25

CUSTOMER DRAWING

Approver:

Checker:

Drawer: **Jeff**

03/06/2007

| | |
|----------|-------------------------------------|
| Title | 2.5mm Pitch Battery Conn. Male Type |
| Dwg No. | TSB1-052X1-04TX |
| File No. | PO3015 |

| | |
|--------|-------|
| Scale: | 4 : 1 |
| Size: | A 4 |
| Rev : | D |
| Sheet: | 1 / 1 |