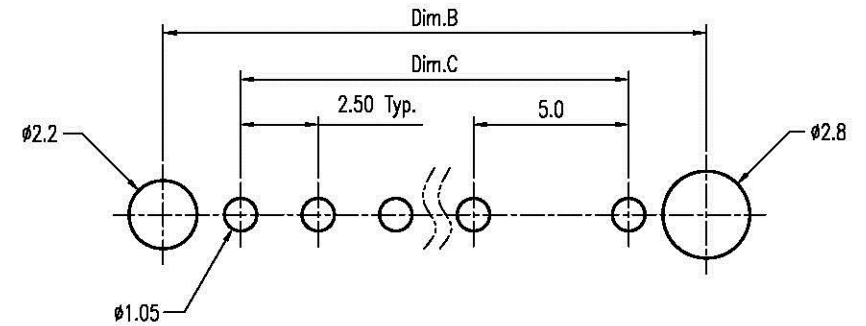
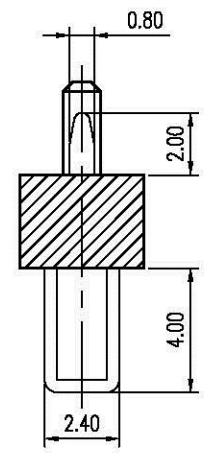
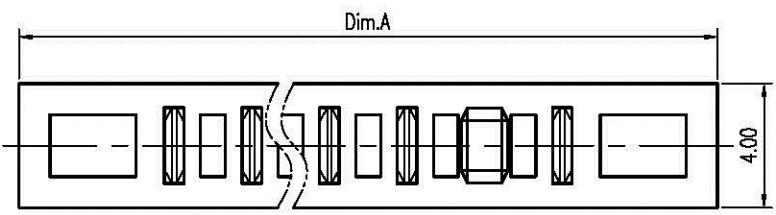
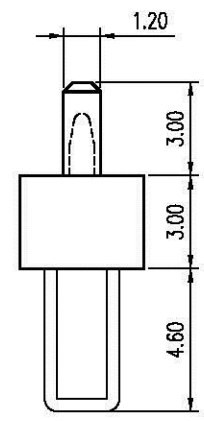
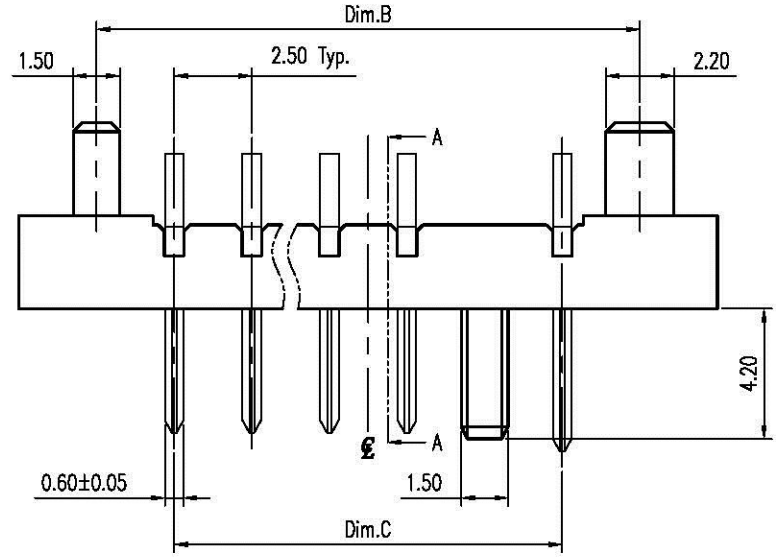


REV.	DESCRIPTION	ECN NO.	DATE	DRAWER
A	New Release		08/22/2007	Kelly



Recommended P.C.B. Layout  
Layout Tolerance =  $\pm 0.05$  mm

- Notes:
- Material :  
Housing : Thermoplastic, UL 94V-0 ,Black  
Terminal : Copper Alloy
  - Finish :  
Terminal : Selected Gold on Contact Area  
1u"Min. Gold on Solder Tails, Both over  
50u" Min. Ni Under-plated Overall
  - Order Information :  
SB1-051 X 1-05T X  
T : RoHS (for High Temperature)
- Amount of Pins  
3 : 3 Pin  
2  
9 : 9 Pin  
A : 10 Pin  
B : 11 Pin
- Plating  
2 : 2u" Min. Gold on Contact Area  
3 : 5u" Min. Gold on Contact Area

Dimension Information:

Part No.	Dim.	Amount of Pins	Dim.A	Dim.B	Dim.C
TSB1-05131-05TX	3	3	17.5	12.5	7.5
TSB1-05141-05TX	4	4	20.0	15.0	10.0
TSB1-05151-05TX	5	5	22.5	17.5	12.5
TSB1-05161-05TX	6	6	25.0	20.0	15.0
TSB1-05171-05TX	7	7	27.5	22.5	17.5
TSB1-05181-05TX	8	8	30.0	25.0	20.0
TSB1-05191-05TX	9	9	32.5	27.5	22.5
TSB1-051A1-05TX	10	10	35.0	30.0	25.0
TSB1-051B1-05TX	11	11	37.5	32.5	27.5

Section A-A

DIMENSION IN mm [inch]			Title 2.5mm Pitch Battery Conn. Male Type		
Tolerance unless otherwise specified			Dwg No. TSB1-051X1-05TX		
X.	X' ± 10'	CUSTOMER DRAWING		Scale: 4 : 1	
X.X ± 0.38	X.X' ± 5'	File No.		Size: A 4	
X.XX ± 0.25	X.XX' ± 2'	Approver:	Checker:	Rev: A	
X.XXX ± 0.13	X.XXX'	Drawer: Kelly		Sheet: 1 / 1	
				08/22/2007	