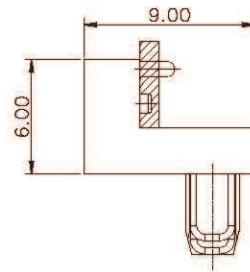


## Specifications

Current rating: 1A AC, DC  
Voltage rating: 250V AC, DC  
Temperature range:  $-25^{\circ}\text{C} \sim +85^{\circ}\text{C}$   
Contact resistance: 50m $\Omega$  Max.  
Insulation resistance: 500M $\Omega$  Min.  
Withstanding voltage: 500V AC/minute  
\*Contact JCTC for details\*

## Assembly layout

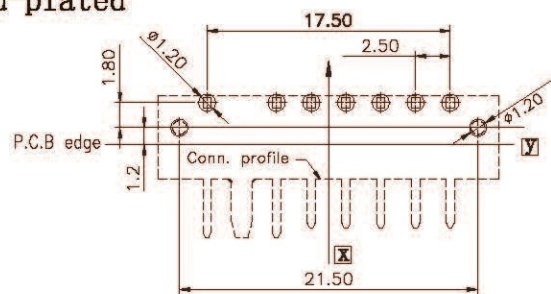
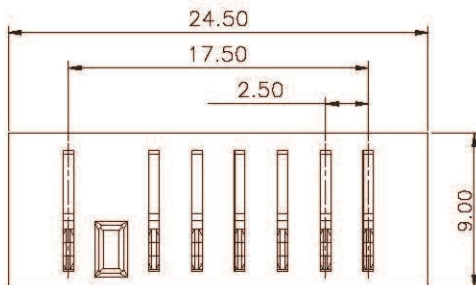


## 52502W90-7P

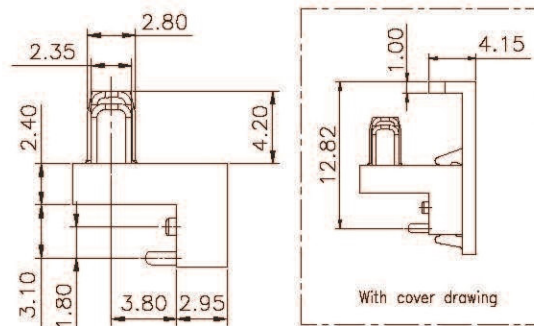
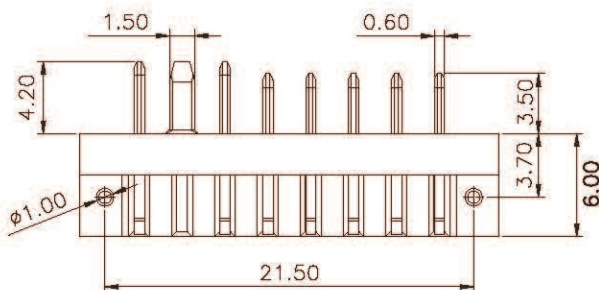
Battery

Reference Informations:

- \*Material: a:Terminal: Phosphor Bronze/Gold-plated
- b:Insulator: LCP, UL94V-0
- c:Cover: LCP, UL94V-0



P.C.B. LAYOUT  
(TOP VIEW)



Unit: mm