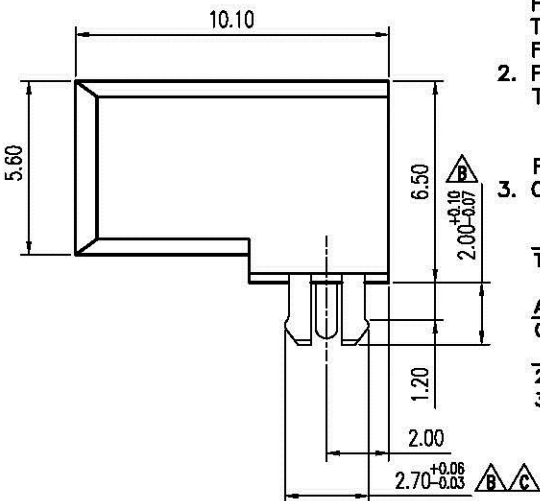
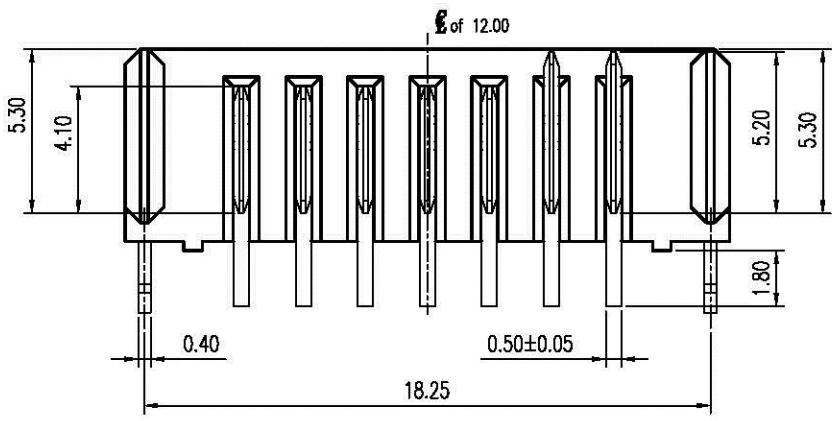
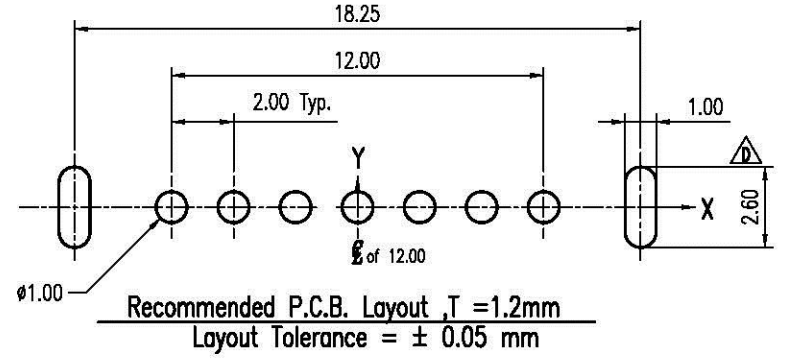
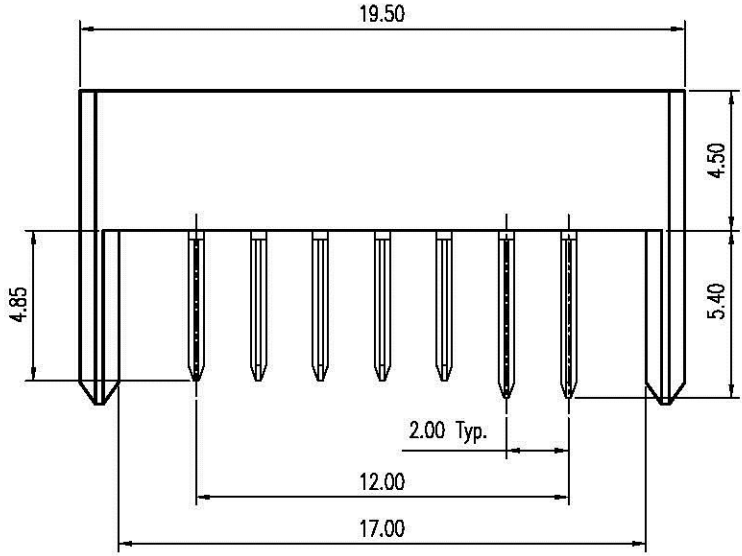


REV.	DESCRIPTION	ECN NO.	DATE	DRAWER
B	Modified Forklock Δ_B x2	EC0912022	12/11/2009	Hyde
C	Modified Forklock Δ_C x1	EC1002007	02/01/2010	Hyde
D	Modified Layout Δ_D x1	EC1007066	07/27/2010	Hyde



Notes:

- Material :
Housing : Thermoplastic UL 94V-0, Black
Terminal : Copper Alloy
Forklock : Copper Alloy
- Finish :
Terminal : Selected Gold on Contact Area, Gold Flash on Solder Tails, Both over 40u" Min. Ni Under-plated Overall
Forklock : 80u" Tin. Over 50u" Min. Ni Under-plated Overall.
- Order Information :
SA1-03F 07 - 00 T X A
T: RoHS (for High Temperature)
Amount of Pins
07 : 7 Pins
2 : 3u" Min. Gold on Contact Area
3 : 5u" Min. Gold on Contact Area

DIMENSION IN mm [inch]				All Connectors		Title		Scale	
Tolerance unless otherwise specified				www.allconnectors.de		2.0mm Pitch Battery Conn.		4 : 1	
X.	±	--	X.'	±	10'	Male Type		A 4	
X.X	±	0.38	X.X'	±	5'	CUSTOMER DRAWING		Rev : D	
X.XX	±	0.25	X.XX'	±	2'	SA1-03F07-00TXA		Sheet: 1 / 1	
X.XXX	±	0.13	X.XXX'	±		File No. PO2014		Drawer: Hyde	
				Appraver:		Checker:		07/27/2010	