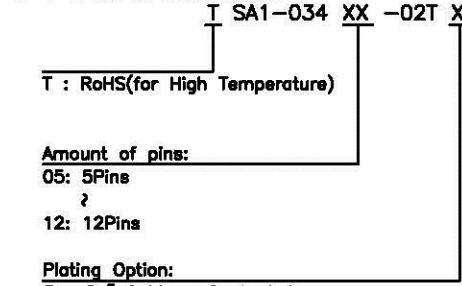


REV.	DESCRIPTION	ECN NO.	DATE	DRAWER
C	Modified by Customer Design	DECN050502	05/06/2005	Edsen
D	Modified By Forklock Design	DECN050702	07/03/2005	Edsen
E	Modified \triangle E X4	EC0809059	09/24/2008	Hyde

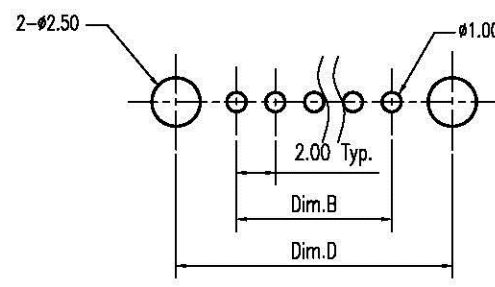
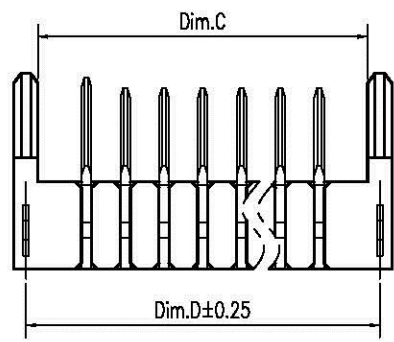
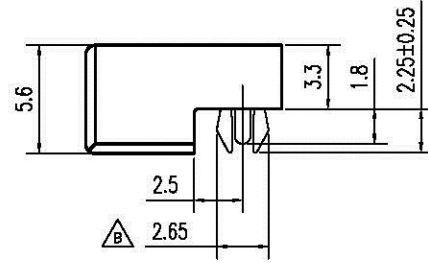
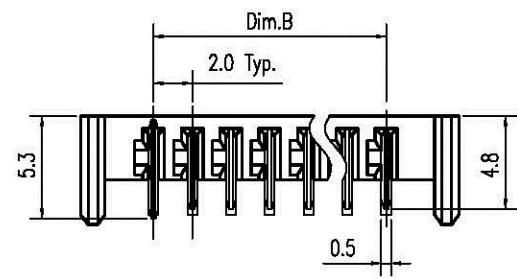
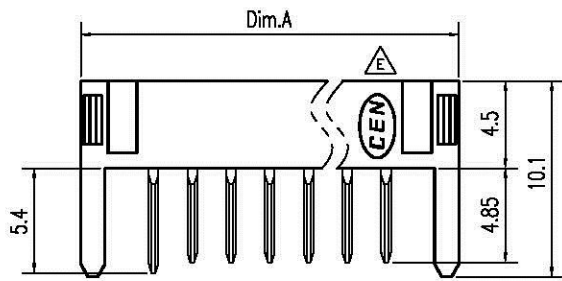
Notes:

- Material :
Housing : Thermoplastic UL 94V-0 Black
Terminal : Copper Alloy
Forklock : Copper Alloy
- Finish :
Terminal : Selected Gold on Contact Area
Goldflash on Solder Tail
Both Over 40u" Min. Ni Under-plated Overall
Forklock : Goldflash or 80u" Min. Tin
Both Over 40u" Min. Ni Under-plated Overall
- Recommended P.C.B thickness = 1.2 ± 0.1 mm
- Order Information :



\triangle E Dimension Information:

Part No.	Dim.	Dim.A	Dim.B	Dim.C	Dim.D
TSA1-03405-02TX	15.5	8.0	13.0	14.25	
TSA1-03406-02TX	17.5	10.0	15.0	16.25	
TSA1-03407-02TX	19.5	12.0	17.0	18.25	
TSA1-03408-02TX	21.5	14.0	19.0	20.25	
TSA1-03409-02TX	23.5	16.0	21.0	22.25	
TSA1-03410-02TX	25.5	18.0	23.0	24.25	
TSA1-03411-02TX	27.5	20.0	25.0	26.25	
TSA1-03412-02TX	29.5	22.0	27.0	28.25	



Recommended P.C.B. Layout
Layout Tolerance = ±0.05mm

DIMENSION IN mm [inch]		Allconnectors		Title 2.0mm Pitch Battery Conn. Male Type		Scale: 2.5 : 1	
Tolerance unless otherwise specified				Dwg No. TSA1-034XX-02TX \triangle E		Size: A 4	
X.	± 0.38	X.'	± 10'	File No. N/A		Rev : E	
X.X	± 0.25	X.X'	± 5'	CUSTOMER DRAWING		Sheet: 1 / 1	
X.XX	± 0.13	X.XX'	± 2'	Appraver:		Drawer: Hyde	
X.XXX	±	X.XXX'	±	Checker:		09/24/2008	
				Appraver:		09/24/2008	