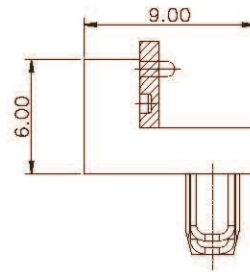


Specifications

Current rating: 1A AC, DC
Voltage rating: 250V AC, DC
Temperature range: -25° C ~ +85° C
Contact resistance: 50mΩ Max.
Insulation resistance: 500MΩ Min.
Withstanding voltage: 500V AC/minute
Contact JCTC for details

Assembly layout

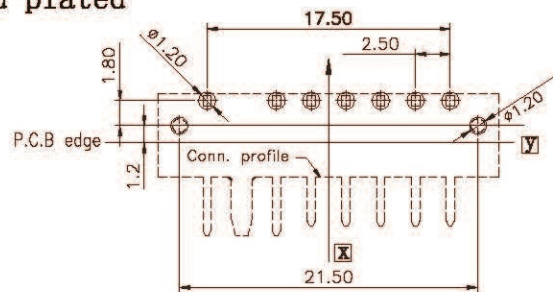
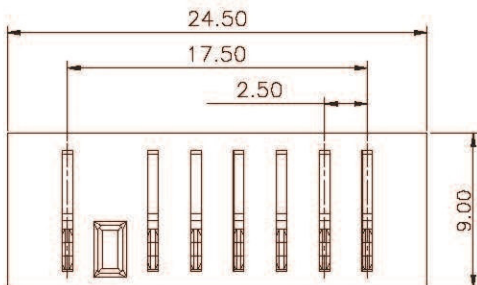


52502W90-7P

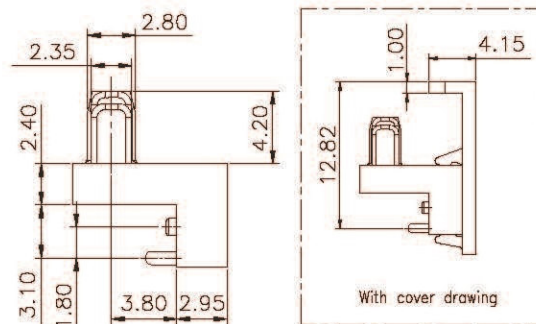
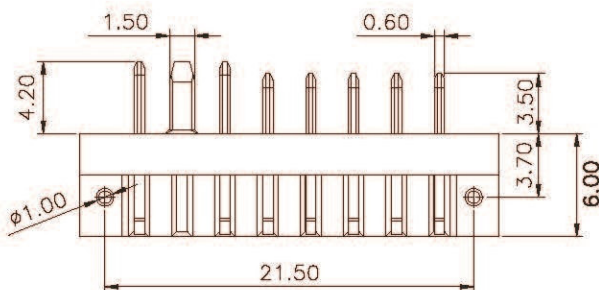
Battery

Reference Informations:

- *Material: a:Terminal: Phosphor Bronze/Gold-plated
- b:Insulator: LCP, UL94V-0
- c:Cover: LCP, UL94V-0



P.C.B. LAYOUT
(TOP VIEW)



Unit: mm