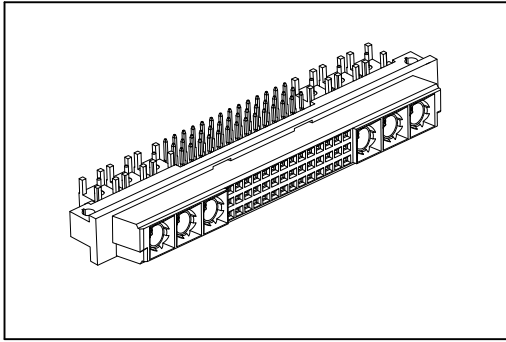


9001- Series

DIN41612 M Type Female



Material:

Housing: 30% Glass Filled PBT UL94V-0.

Contacts: Copper Alloy.

Coaxial or Power: Cu Alloy.

Electrical Characteristics:

Current Rating: 2 A.

Dielectric Withstanding Voltage: AC 1000V.

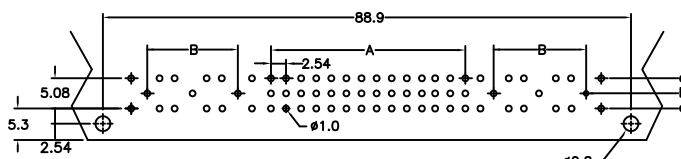
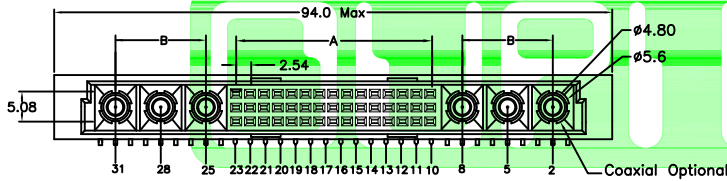
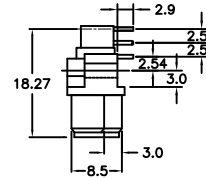
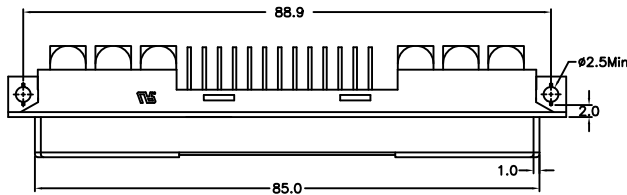
Insulator Resistance: 1000MΩ min.

Contact Resistance: 20mΩ max.

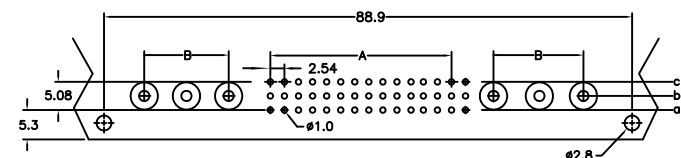
Operating Temperature: -55°C ~+125°C.

Features:

- * Mates with male 9001-91
9001-93



P.C. Board Layout (Coaxial)



P.C. Board Layout (Power)

Dimension				
A	(2.54 x No of Contact)/3-2.54			
B	(7.62 x No of Coaxial)/2-7.62			
Pitch	Position	Rows with Contacts	Contact Arrange	with Coaxial Or Power
2.54mm	78	a b c		2 Pcs 7 8 5 4
	60	a b c		4 Pcs 10 9 8 7
	42	a b c		6 Pcs 13 12 11 10
	24	a b c		8 Pcs 16 15 14 13
	6	a b c		10 Pcs 19 18 17 16
	52	a - c		2 Pcs 7 8 5 4
	40	a - c		4 Pcs 10 9 8 7
	28	a - c		6 Pcs 13 12 11 10
	16	a - c		8 Pcs 16 15 14 13
	4	a - c		10 Pcs 19 18 17 16

Ordering information

9001- Series	9	4	42	06	C	00	D	A
		4: Female	Position	02: With 2 Coaxial or Power 04: With 4 Coaxial or Power 06: With 6 Coaxial or Power 08: With 8 Coaxial or Power 10: With 10 Coaxial or Power	C: Dip Tin Contact Gold G: Gold	00: G/F 10: 10μΩ 15: 15μΩ 30: 30μΩ	D: Dip Type	A: Tray Package

* The Special Contacts Must be Ordered Separately, Pls Refer to Page CC03.