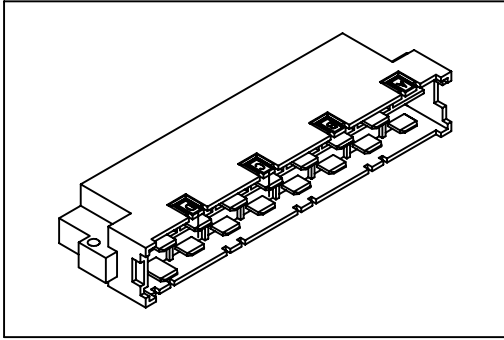


# 9001 Series

## DIN41612 H15 Type Male



**Material:**

Housing: 30% Glass filled PBT UL94V-0.

Contacts: Brass.

**Electrical Characteristics:**

Current Rating: 15 AMP.

Dielectric Withstanding Voltage: AC 3100V For 1 minute.

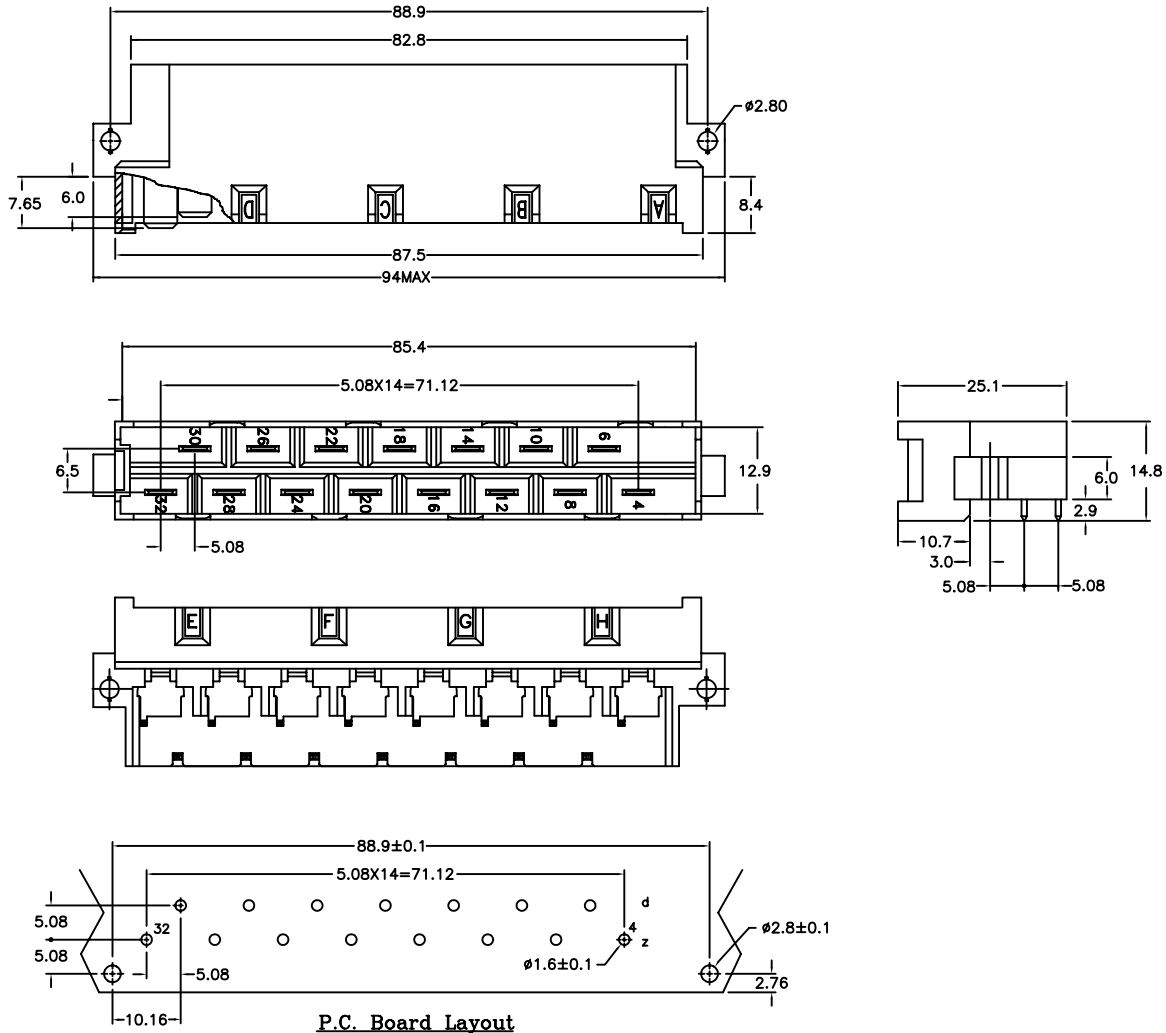
Insulator Resistance: 1000MΩmin. at DC 500V.

Contact Resistance: 30mΩmax. at DC 100mA.

Operating Temperature: -55°C ~ +105°C.

**Features:**

- \* Power connectors.
- \* Mates with 9001-52151A.



### Ordering information

9001-	51	15	1	A	A
Series	1: Male	Position	1: Z32 Premating 1.65mm 2: Z4 & Z32 Premating 1.65mm	A: AG/NI Plating T: TIN/NI Plating	A: Tray Package

\* Additional premating are available upon request, please consult factory.