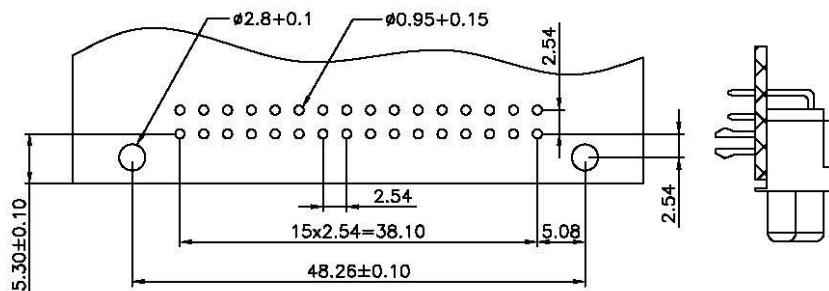


Recommended P.C.B. layout



DIN 41612 EUROCARD CONNECTORS

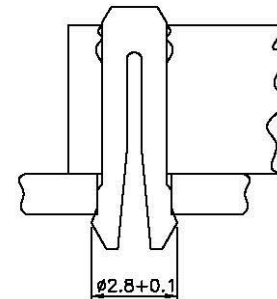
Right Angle Female Type Q Connectors

Technical data

EURO DIN 41612:
Housing:
Contact:

Plating:
Operating temperature:
Contact resistance:
Insulator resistance:
Current rating:
Withstanding voltage:
Contact Rating:
RoHS Compliant

Signal
PBT & 30%Class Fiber(UL94-0)
Female : Phosphor Bronze,lead free
2U²Au plated on contact area,
Tin plated on tail
-55°C~+105°C
30m(ohm)max.at DC 500V
1000M(ohm)min.at DC 500V
2 AMP
AC 1000V for 1 minute
Class 3



RoHS Compliant

All Connectors

www.allconnectors.de
Tel.: 0049 711 7009503
10,94 Hilderstadt - Germany

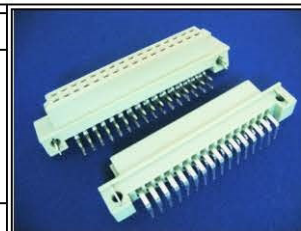
info@allconnectors.de
Fax: 0049 711 7009504
Kettnerstr. 2b

DRAWING BY CY
CHECKED BY GENIUS
UNIT / mm SCALE 1 : 1
DATE
SIZE A4

TOLERANCES ARE

X ±
X ±
XX ±
XXX ±
ANG ±

P PROJECTION



ORDER INFORMATION

UB-SRZ-2X16-LF
SERIES | CLIP | 32 WAY | LEADFREE
DIP 90°
FEMALE

DESCRIPTION: