

Connector

DIN 41612 Series

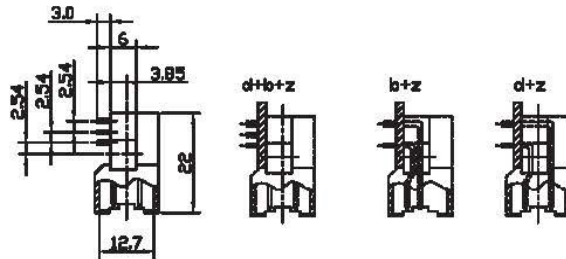
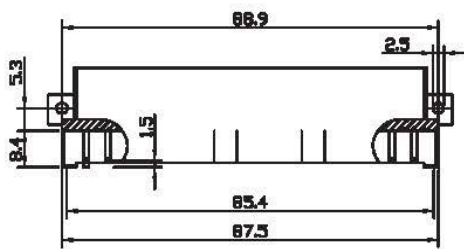
KLS1-F48 3x16Pin 3 row Short Type

Electrical:

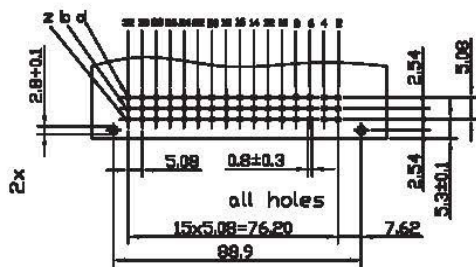
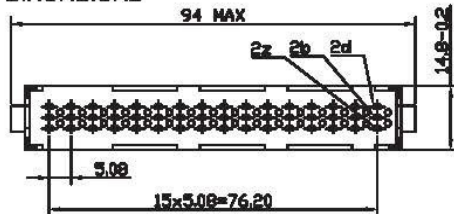
Contact Resistance: 30 mΩ Max. Insulator
Insulation Resistance: 1000 MΩ Min. At 500 VDC
Withstand Voltage: 1000 VAC for 1 minute
Current Rating: 2 AMP
Voltage Rating: 250 VAC
Operating Temperature: -55 °C ~ +105 °C

Material:

Insulator: Glass-filled thermoplastic PBT UL94V-0
Contacts: Male-Brass / Female-Phosphor Bronze
Plating: full gold or selected gold in mating area.



Dimensions



Recommended P.C.B. layout

| Part Number | Number of contacts | Contact Arrangement | Rows With Contacts | Reference Part Number |
|-------------|--------------------|---------------------|-------------------------|-----------------------|
| 3348 | 48 | | d+b+z | 09 06 148 6901 |
| 3232A | 32 | | b+z | 09 06 132 6901 |
| 3232B | 32 | | d+z | 09 06 132 6931 |
| 3347+1 | 47+1 | | d+b+z z32 Prt-mating | 09 06 148 6921 |
| 3231+1 | 31+1 | | b+z z32 Prt-mating | 09 06 132 6921 |

ORDER INFORMATION

Product No.: KLS1-F48-3348-MR

Pos. No. _____
3x16Pin 3 row Short Type
Part Number: 3348 / 3232A / 3232B /
3347+1 / 3231+1

Tail Style: S -4.0mm Straight pin
R -Right pin
Contact Type: M=Male Plug
F=Female Receptacle