

# Connector

## DIN 41612 Series

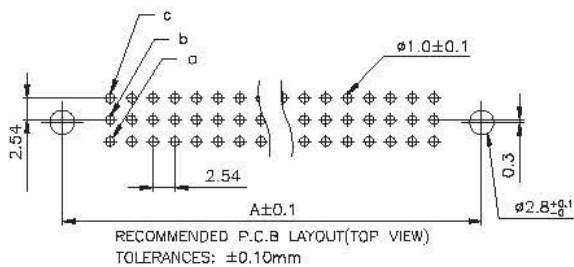
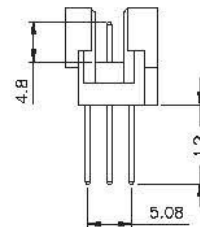
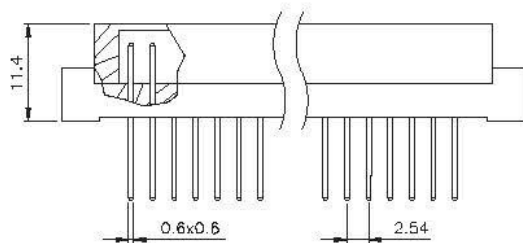
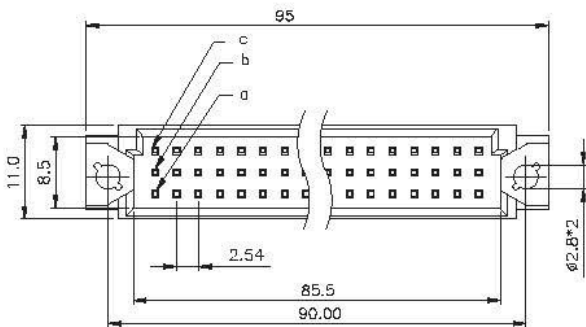
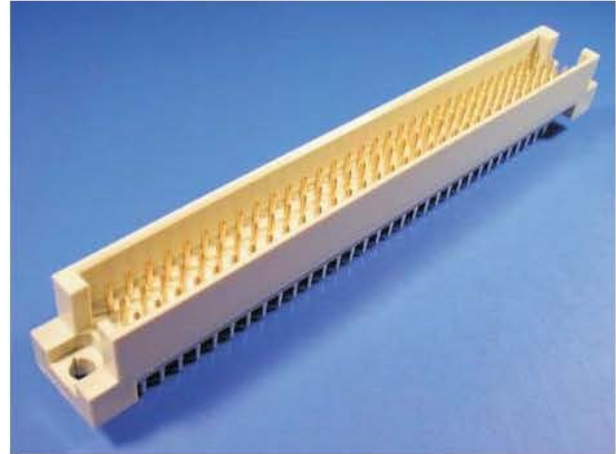
### KLS1-D3 3X32Pin 3 row Long R Type

#### Electrical:

Contact Resistance: 30 mΩ Max. Insulator  
Insulation Resistance: 1000 MΩ Min. At 500 VDC  
Withstand Voltage: 1000 VAC for 1 minute  
Current Rating: 2 AMP  
Voltage Rating: 250 VAC  
Operating Temperature: -55 °C ~ +105 °C

#### Material:

Insulator: Glass-filled thermoplastic PBT UL94V-0  
Contacts: Male-Brass / Female-Phosphor Bronze  
Plating: full gold or selected gold in mating area.



| Pitch  | Position | Rows with Contacts | Contact Arrange | Part Number |
|--------|----------|--------------------|-----------------|-------------|
| 2.54mm | 96       | a b c              |                 | 3396        |
|        | 64       | a - c              |                 | 3264        |
| 5.08mm | 48       | a b c              |                 | 3348        |
|        | 32       | a - c              |                 | 3232        |

## ORDER INFORMATION

### Product No.: KLS1-D3-3396-MW1

Pos. No. \_\_\_\_\_  
3X32Pin 3 row Long Type \_\_\_\_\_  
Part Number: 3396 / 3264 / 3348 / 3232 \_\_\_\_\_

Tail Style: S -4.0mm Straight pin  
W1-13mm Straight pin  
R -Right pin  
Contact Type: M=Male Plug  
F=Female Receptacle