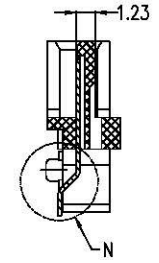
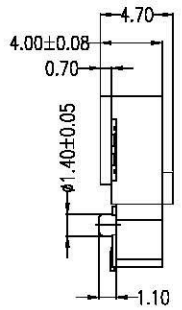
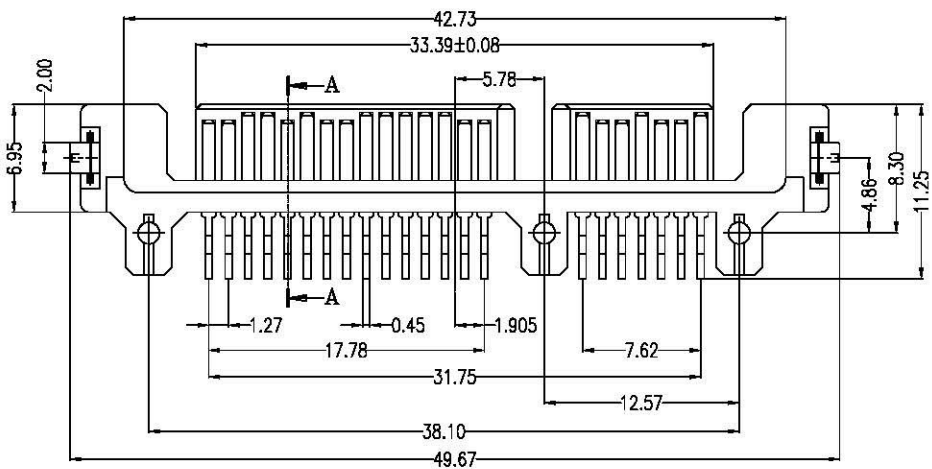
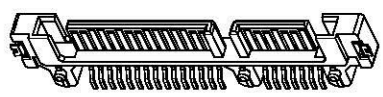


VIEW M
SCA 5:1

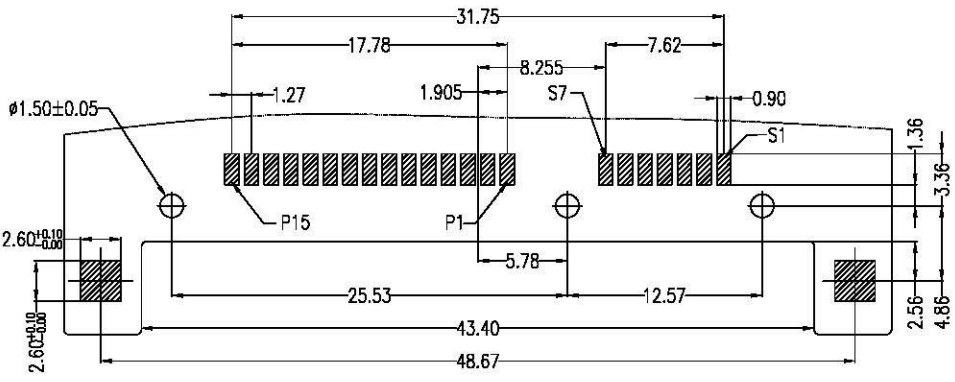
VIEW N
SCA 5:1



SECTION A-A



Product 3D Dwg



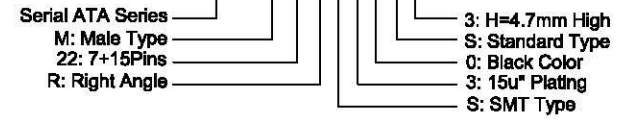
PCB LAYOUT

NOTES:

1. Material:
 Housing: LCP, UL 94V-0 Rated.
 Color: Black.
 Contact: Brass.
 Plating: Gold plating over Nickel on contact area; Tin plating on solder tail.
 Harpoon: Brass.
 Plating: Tin plating over Nickel.
2. Mechanical:
 Insertion Force: 45N max.
 Withdrawal Force: 10N min.
 Durability: 500 cycles
3. Electrical Specification:
 Current Rating: 1.5 Ampere per contact.
 Contact Resistance: 30 Milliohms max.
 Insulation Resistance: 1000 megohms min.
 Dielectric Withstanding Voltage: 500 V AC.
4. Environmental:
 Operating Temperature: -55°C to +125°C

Part Number:

CSAT-M22RS30-S3



A		12/06/06		RELEASED FOR PRODUCTION	
REV	DATE	DESCRIPTION			
UNLESS OTHERWISE SPECIFIED, DIMENSIONS ARE IN MM TOLERANCES ARE:					
DECIMALS ANGLES		APPROVALS		DATE	
X ± .38	± 3°	DRAWN	Chris	12/01/06	www.allconnectors.de TEL: 0049 711 7069303 70754 Filberstadt - Germany info@allconnectors.de Fax: 0049 711 7069304 Kettnerstr. 25
.XX ± .25		CHECKED	Cindy	12/05/06	
.XXX ± .20		APPV	Jason	12/06/06	
DO NOT SCALE DRAWING		SHEET	1 OF 1	SCALE	NONE
		DWG. NO.	CSAT-M22-0C3		REV. A