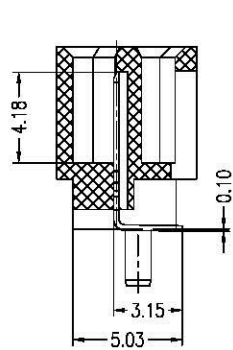
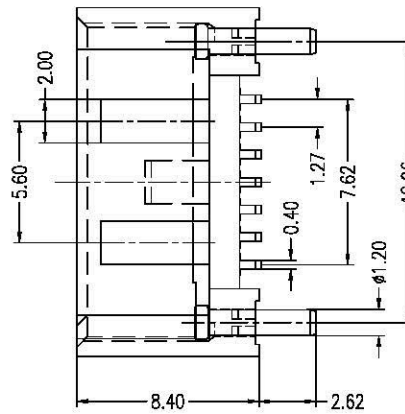
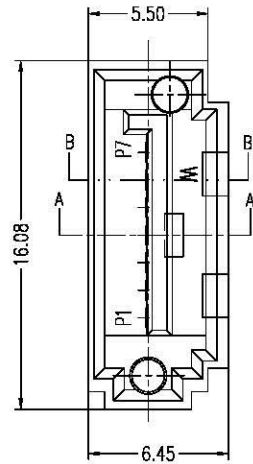
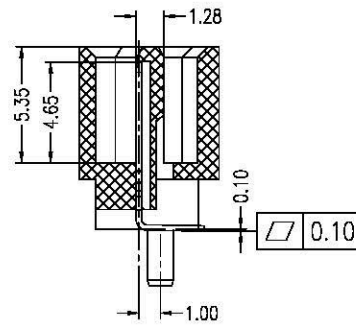


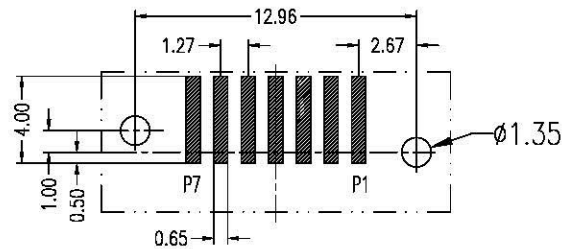
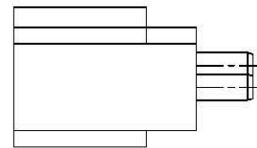
Signal Segment	
Name	Type
S1	GND
S2	A+
S3	A-
S4	GND
S5	B-
S6	B+
S7	GND



SECT B-B



SECT A-A



PCB LAYOUT
(T=1.60mm)

NOTES:

1. Material:

Housing: Nylon6T, UL 94V-0 rated.
 Color: Black.
 Contact: Brass.
 Plating: Gold Plating over Nickel on Contact Area.
 Tin Plating on Solder Tail.
 Harpoon: Brass.
 Plating: Tin Plating over Nickel.

2. Mechanical:

Insertion Force: 45N Max.
 Withdrawal Force: 10N Min.
 Durability: 500 Cycles

3. Electrical Specification:

Operation Voltage: 100VAC Max.
 Current Rating: 1.5 Ampere per Contact.
 Contact Resistance: 30mΩ Max.
 Insulation Resistance: 1000MΩ Min.
 Dielectric Withstanding Voltage: 500 VAC.


4. Environmental:

Operating Temperature: -55°C to +125°C

Part Number:

CSAT-M07VS30-BS

Serial ATA Series	S: Standard Type
F: Female Type	B: B Type Harpoon
22: 7+15Pins	0: Black Color
R: Right Angle	3: 15u" Plating
	S: SMT Type

A	08/29/07	RELEASED FOR PRODUCTION							
REV	DATE	DESCRIPTION							
UNLESS OTHERWISE SPECIFIED, DIMENSIONS ARE IN MM. TOLERANCES ARE:		 www.allconnectors.cc info@allconnectors.cc Tel.: 0049 711 7000503 Fax: 0049 711 7000504 70794 - Ildersstadt - Germany Kottbamerstr. 22							
DECIMALS	ANGLES								
X ± .38	± 3°								
.XX ± .25									
.XXX ± .20		APPROVALS	DATE						
		DRAWN	Chris	08/29/07					
		CHECKED	Cindy	08/29/07					
		APPV	Jason	08/29/07					
DO NOT SCALE DRAWING		SHEET	1 OF 1	SCALE	NONE	DWG. NO.	CSAT-M07-VBS	REV.	A