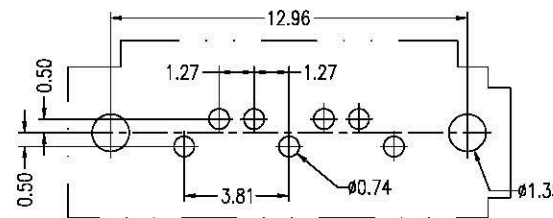
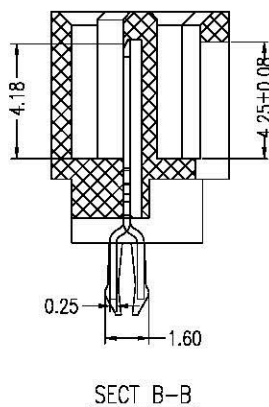
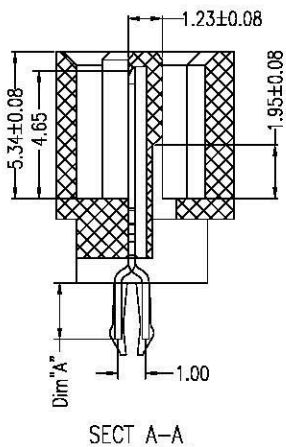


Unit:mm

Part Number	Dim 'A'
CSAT-M07VDC0-A2	2.15~2.30
CSAT-M07VDC0-A3	3.30

**NOTES:**

- Material:**  
 Housing: Nylon46, UL 94V-0 rated.  
 Color: Black.  
 Contact: Brass  
 Plating: Gold Plating over Nickel on Contact Area.  
 Tin Plating on Solder tail.  
 Harpoon: Brass.  
 Plating: Tin Plating over Nickel.
- Mechanical:**  
 Insertion Force: 45N Max.  
 Withdrawal Force: 10N Min.  
 Durability: 500 Cycles
- Electrical Specification:**  
 Current Rating: 1.5 Ampere per Contact.  
 Contact Resistance: 30mΩ Max.  
 Insulation Resistance: 1000MΩ Min.  
 Dielectric Withstanding Voltage: 500 VAC.
- Environmental:**  
 Operating Temperature: -55°C to +85°C



P.C.B. Layout  
(T=1.60mm)

**Part Number:**

**CSAT-M07VDC0-A2**

- |                   |                           |
|-------------------|---------------------------|
| Serial ATA Series | 2: Pin Length 2.15~2.30mm |
| M: Male Type      | 3: Pin Length 3.30mm      |
| 07: 7Pins         | A: Straight DIP Type A    |
| V: Vertical Type  | 0: Black Color            |
| D: DIP Type       | G: Gold Flash             |
|                   | 3: 15u" Plating           |

A	09/26/07	RELEASED FOR PRODUCTION	
REV	DATE	DESCRIPTION	
UNLESS OTHERWISE SPECIFIED, DIMENSIONS ARE IN MM TOLERANCES ARE:		 www.allconnectors.de info@allconnectors.de Tel.: 0049 711 7009008 Fax: 0049 711 7009001 70794 Fellm.stadt Germany Kellm. 25	
DECIMALS	ANGLES		
X ± .38	± 3°		
.XX ± .25			
.XXX ± .20		DESCRIPTION	Serial ATA, 7P, Male, Shrouded, Vertical Type DIP Type A 2.15~2.30mm, Gold Flash, Black Color
DO NOT SCALE DRAWING	SHEET 1 OF 1	SCALE NONE	DWG. NO. CSAT-M07-0G1