

Signal Segment	
Name	Type
S1	GND
S2	A+
S3	A-
S4	GND
S5	B-
S6	B+
S7	GND

Power Segment			
Name	Type	Name	Type
P1	V33	P9	V5
P2	V33	P10	GND
P3	V33	P11	DAS/DSS
P4	GND	P12	GND
P5	GND	P13	V12
P6	GND	P14	V12
P7	V5	P15	V12
P8	V5		

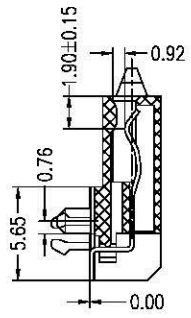
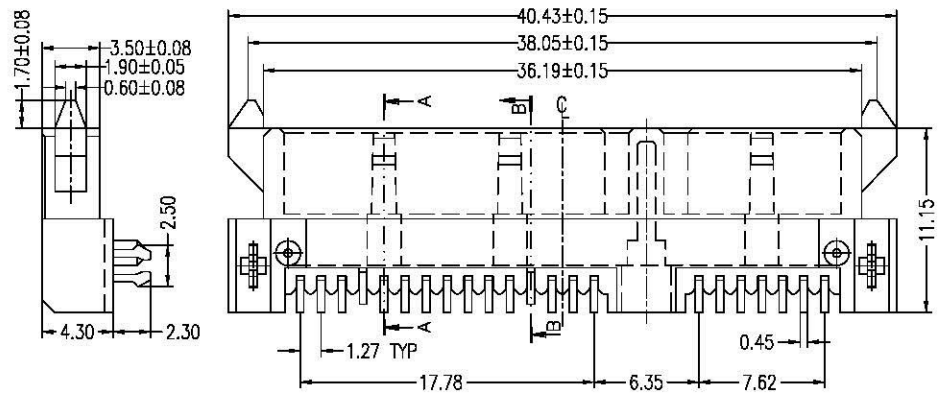
**NOTES:**

- Material:**  
 Housing: LCP+50%G.F, UL 94V-0 Rated.  
 Color: Black.  
 Contact: Phosphor Bronze.  
 Plating: Gold Plating over Nickel on Contact Area.  
 Tin Plating on Solder Tail.  
 Harpoon: Brass.  
 Plating: Tin Plating over Nickel.

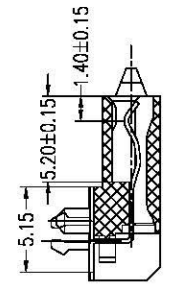
- Mechanical:**  
 Insertion Force: 45N Max.  
 Withdrawal Force: 10N Min.  
 Durability: 500 Cycles

- Electrical Specification:**  
 Operation Voltage: 100VAC Max.  
 Current Rating: 1.5 Ampere per Contact.  
 Contact Resistance: 30mΩ Max.  
 Insulation Resistance: 1000MΩ Min.  
 Dielectric Withstanding Voltage: 500 VAC.

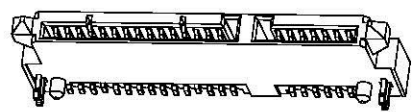
- Environmental:**  
 Operating Temperature: -55°C to +85°C



SECT A-A



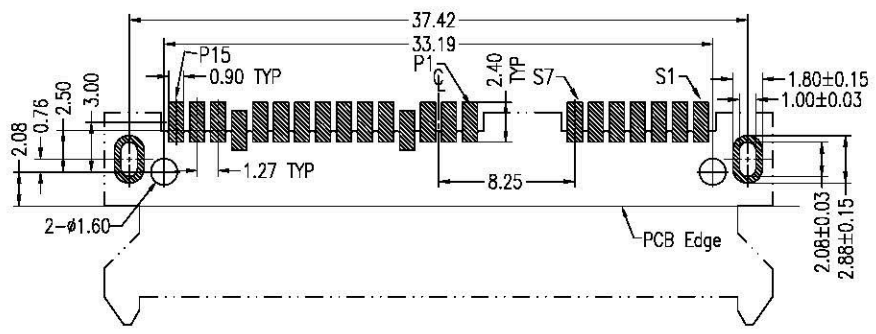
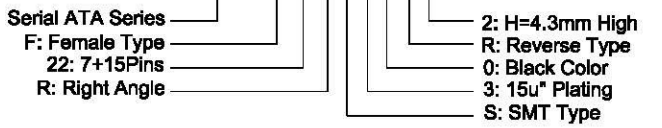
SECT B-B



Product 3D

**Part Number:**

**CSAT-F22RS30-R2**



P.C.B LAYOUT (T=1.6)  
TOP VIEW

A	11/19/07	RELEASED FOR PRODUCTION		DESCRIPTION	
REV	DATE	CAD GENERATED DRAWING, DO NOT MANUALLY UPDATE			
UNLESS OTHERWISE SPECIFIED, DIMENSIONS ARE IN MM. TOLERANCES ARE:		APPROVALS		DATE	
DECIMALS	ANGLES	DRAWN	Chris	11/19/07	
X ± .38	± 3°	CHECKED	Chndy	11/19/07	
.XX ± .25		APPV	Jason	11/19/07	
.XXX ± .20		DO NOT SCALE DRAWING			
SHEET 1 OF 1		SCALE NONE		DWG. NO.	CSAT-F22-B0D
				REV.	A



www.allconnectors.de  
 info@allconnectors.de  
 41561 Hildenstadt - Germany

DESCRIPTION  
**Serial ATA 7+15P Female, Right Angle Reverse Type, SMT, H:4.3mm**